



Montpelier Road, W5

£425,000

*** Offers In Excess Of ***

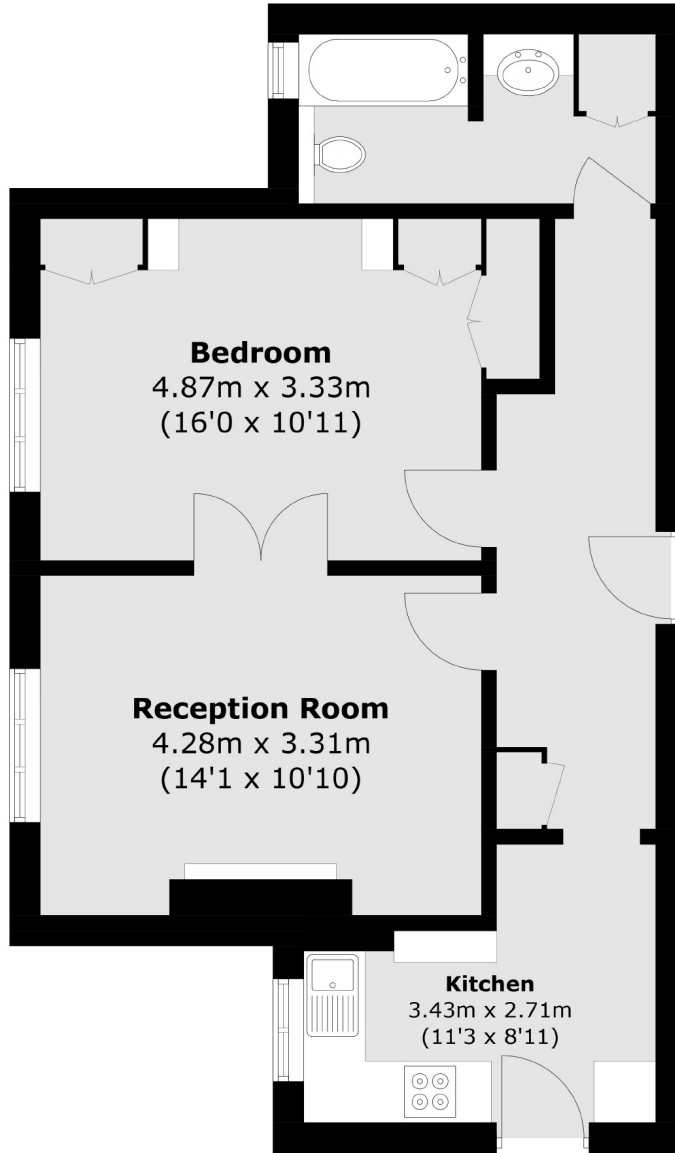
A large one double bedroom flat with share of freehold, communal gardens and a garage.



Filled with natural light throughout this beautiful flat, set in this ideal location comprises a large double bedroom, living room, kitchen and family bathroom.

Hanger Lane, Ealing Broadway (Elizabeth Line) & North Ealing stations all within walking distance which provide excellent transport links. Montpelier & Hanger hill parks are a short walk away to enjoy wonderful amenities.

- Share Of Freehold • Communal Gardens • Garage •
- One Double Bedroom • Excellent Transport • Local Parks •



Total area (approx.): 54.2 sq. m (583.4 sq. ft)

Robertson Smith & Kempson Ealing Sales

1 The Broadway, London,
W5 2NT

020 8840 7677

ealingsales@robertsonsmithandkempson.co.uk

Energy Rating: C. We aim to make our particulars both accurate and reliable. However they are not guaranteed; nor do they form part of an offer or contract. If you require clarification on any points then please contact us, especially if you're traveling some distance to view. Please note that appliances and heating systems have not been tested and therefore no warranties can be given as to their good working order.