



Highview Road, W13

£725,000

*** Offers In Excess Of ***

Coming to the market for the first time in almost fifty years, this three bedroom family home is ideal for someone looking to put their own stamp on it. Huge potential to extend to the rear & loft like neighbouring properties have done (STPP).

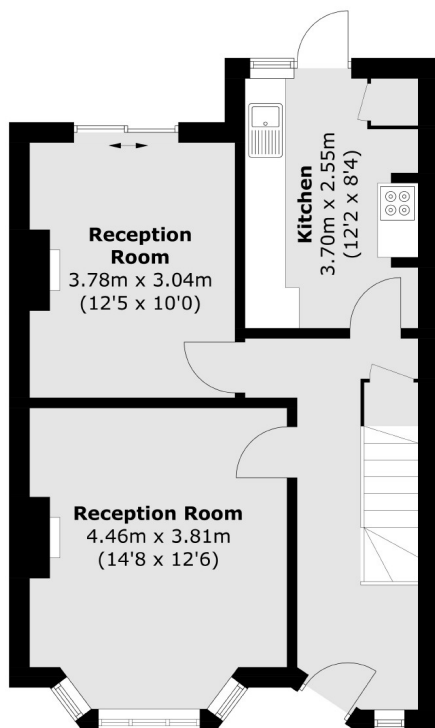


The ground floor comprises two large double reception rooms and separate kitchen. The accommodation on the first floor offers two double bedrooms, additional single bedroom, shower-room & additional WC. An abundance of natural light throughout.

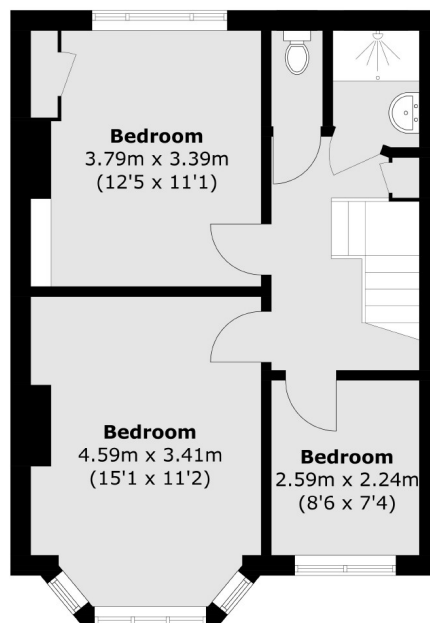
Ideally located for Elizabeth Line (West Ealing) providing excellent transport links to London. Local parks to enjoy including Pitshanger & Cleveland park. Well regarded schools to choose from locally.

- Three Bedroom • No Onward Chain • Secluded Garden •
- Huge Potential To Extend • Elizabeth Line (West Ealing) • Local Parks •





Ground Floor



First Floor

Total area (approx.): 96.2 sq. m (1035.4 sq. ft)

Robertson Smith & Kempson Ealing Sales
1 The Broadway, London,
W5 2NT
020 8840 7677
ealingsales@robertsonsmithandkempson.co.uk

Energy Rating: E. We aim to make our particulars both accurate and reliable. However they are not guaranteed; nor do they form part of an offer or contract. If you require clarification on any points then please contact us, especially if you're traveling some distance to view. Please note that appliances and heating systems have not been tested and therefore no warranties can be given as to their good working order.