

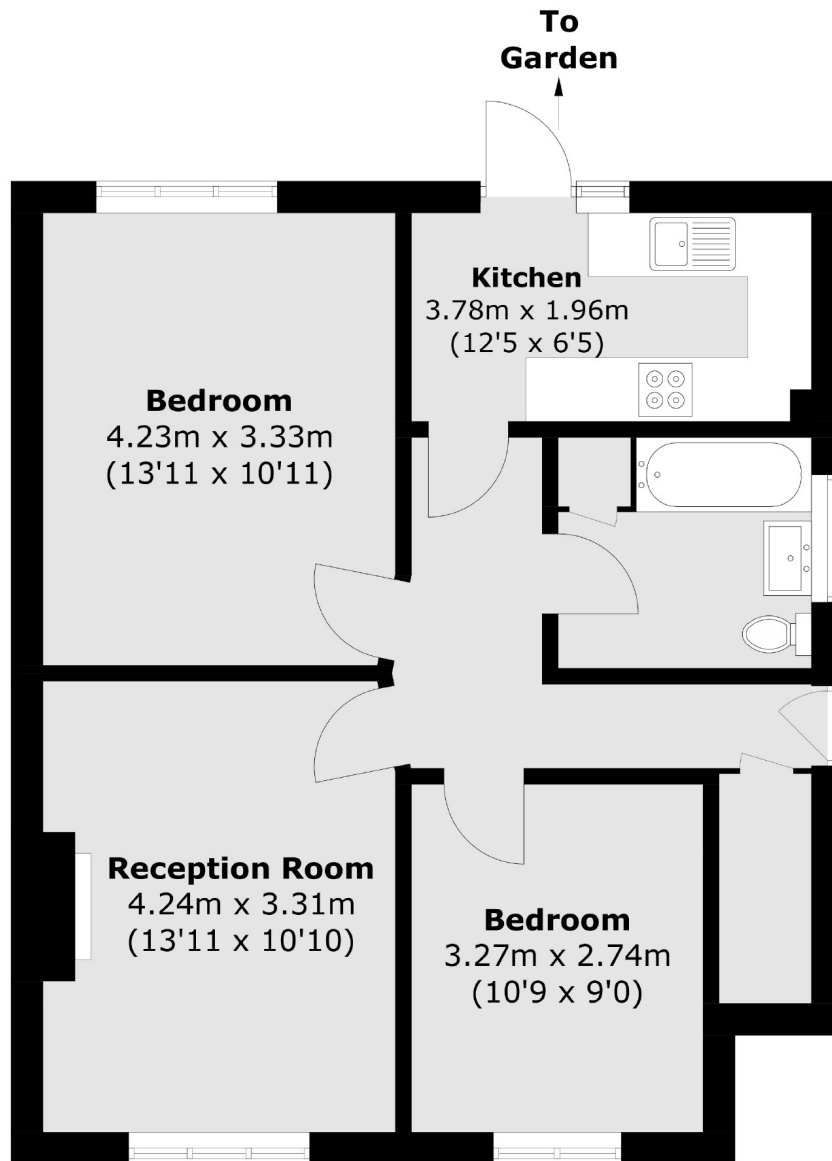


## **Gifford Gardens, W7**

£450 pw (£1950 pcm)

This well-presented ground floor maisonette has two double bedrooms, a spacious reception, modern bathroom and kitchen. The property also has gas central heating and a landscaped private garden.

Gifford Gardens is a popular residential road and is close to Greenford Avenue with bus routes to Ealing Broadway, Greenford and Hanwell.



Total area (approx.): 61.4 sq. m (660.9 sq. ft)

Robertson Smith & Kempson Ealing Lettings  
1 The Broadway, London, W5  
2NT  
020 8840 7885  
[ealinglettings@robertsonsmithandkempson.co.uk](mailto:ealinglettings@robertsonsmithandkempson.co.uk)

Energy Rating: D. We aim to make our particulars both accurate and reliable. However they are not guaranteed; nor do they form part of an offer or contract. If you require clarification on any points then please contact us, especially if you're traveling some distance to view. Please note that appliances and heating systems have not been tested and therefore no warranties can be given as to their good working order.