



## Meadvale Road, W5

£1,300,000

This spectacular five bedroom family home extended to the rear and the loft has been meticulously refurbished throughout to the highest standard. A rare and enviable aspect overlooking Pitshanger park. Rarely granted private off-street parking to the front of the house also. Very useful gym and storage at the rear of the garden in a multi functional outbuilding.



This family home needs to be viewed to be truly appreciated, the ground floor accommodation offers a large front reception room and to the rear the house has been extended to create a magnificent kitchen/dining area filled with natural light overlooking Pitshanger park.

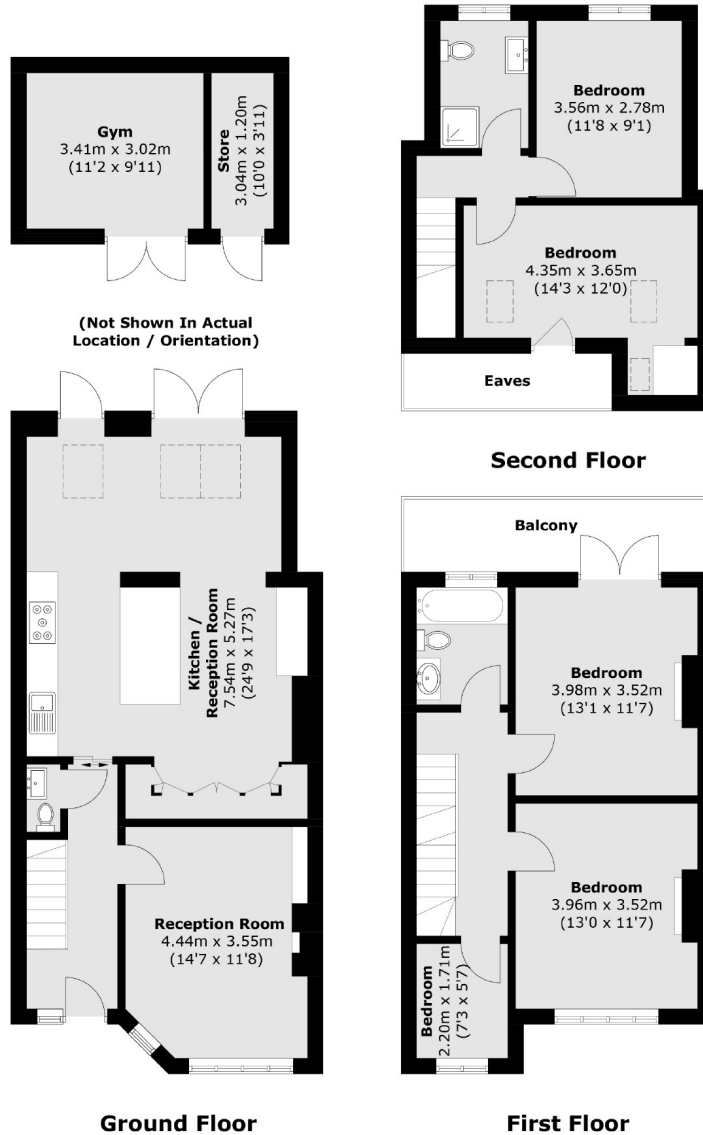
The first floor comprises two double bedrooms, additional single bedroom and family bathroom. The double bedroom at the back of the house has the most stunning balcony overlooking the park, a perfect spot for some rest and relaxation. The loft has been tastefully converted to include two double bedrooms and shower-room.

The house throughout is in fabulous condition, ready to move straight in and enjoy

Perivale, Castle Bar Park and Hanger Lane stations all within one mile providing excellent transport links. A range of well regarded schools locally including the Ofsted outstanding Vicar's Green primary. An array of shops and restaurants to choose from on Pitshanger Lane, a short walk from this beautiful home.

- Five Bedrooms • Scenic & Envious Aspect • Gym •
  - Off-Street Parking • Stunning Condition • West Facing Secluded Garden •
-





Total area (approx.): 140.3 sq. m (1,510.2 sq. ft)  
 Outbuilding: 14.6 sq. m (157.1 sq. ft)  
 Balcony: 8.3 sq. m (89.3 sq. ft)  
 (Excluding Eaves)

Robertson Smith & Kempson Ealing Sales  
 1 The Broadway, London,  
 W5 2NT  
 020 8840 7677  
[ealingsales@robertsonsmithandkempson.co.uk](mailto:ealingsales@robertsonsmithandkempson.co.uk)

Energy Rating: C. We aim to make our particulars both accurate and reliable. However they are not guaranteed; nor do they form part of an offer or contract. If you require clarification on any points then please contact us, especially if you're traveling some distance to view. Please note that appliances and heating systems have not been tested and therefore no warranties can be given as to their good working order.