

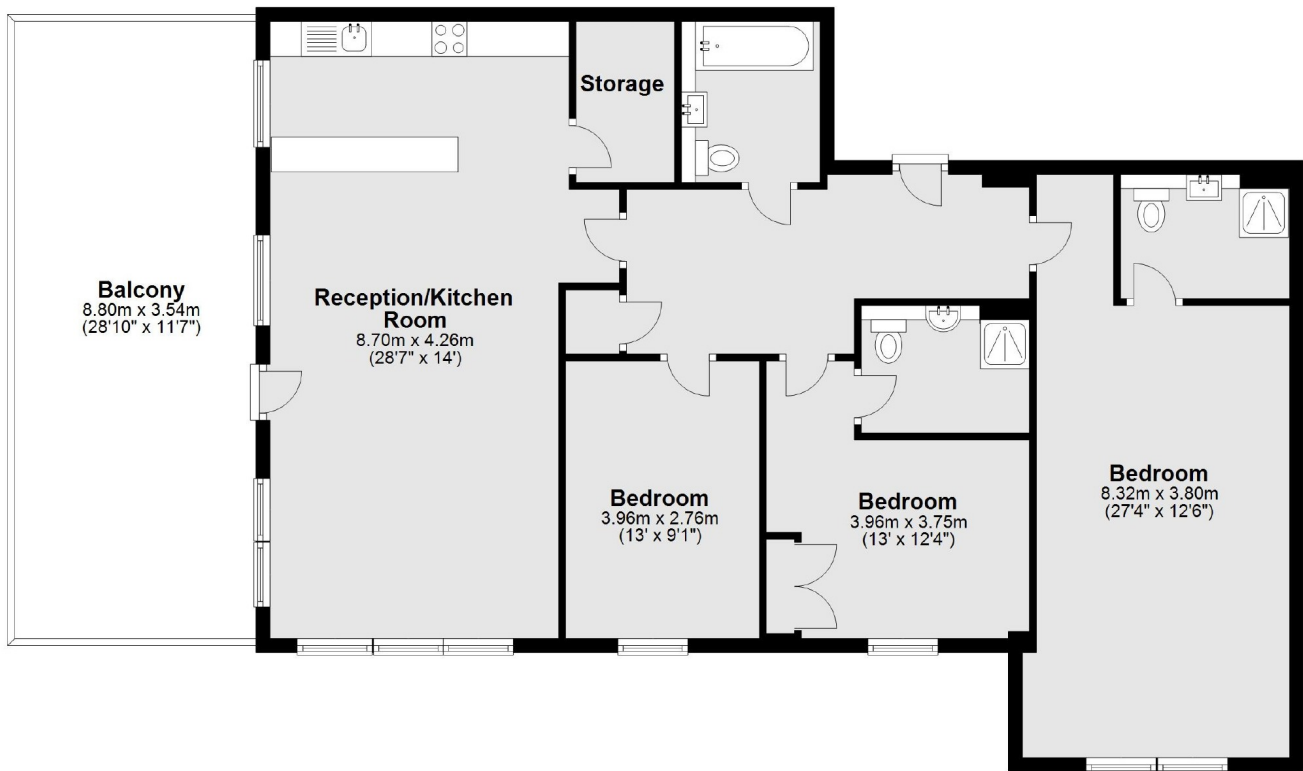


Filmworks Walk, W5

£1,176 pw (£5,100 pcm)

An immaculately presented, three double bedroom apartment, in a new build development in central Ealing with concierge and lift access. The property is on one of the upper floors and includes large entrance hallway, large master bedroom with dressing area and en suite, second bedroom also with en suite, third bedroom and family bathroom.

Filmworks Walk is a less than half a mile from Ealing Broadway



Main area: Approx. 119.7 sq. metres (1288.6 sq. feet)
Plus balconies, approx. 31.2 sq. metres (335.3 sq. feet)

Robertson Smith & Kempson Ealing Lettings
1 The Broadway, London, W5
2NT
020 8840 7885
ealinglettings@robertsonsmithandkempson.co.uk

Energy Rating: B. We aim to make our particulars both accurate and reliable. However they are not guaranteed; nor do they form part of an offer or contract. If you require clarification on any points then please contact us, especially if you're traveling some distance to view. Please note that appliances and heating systems have not been tested and therefore no warranties can be given as to their good working order.