



## Warwick Road, W5

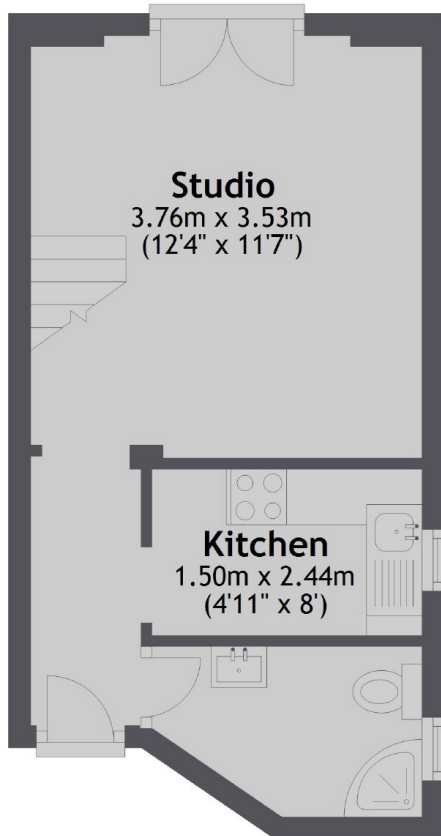
£275,000

An excellent period flat in the heart of Ealing Broadway with a modern kitchen and bathroom plus loft space; ideal as a first home or investment. Secluded communal gardens to enjoy.

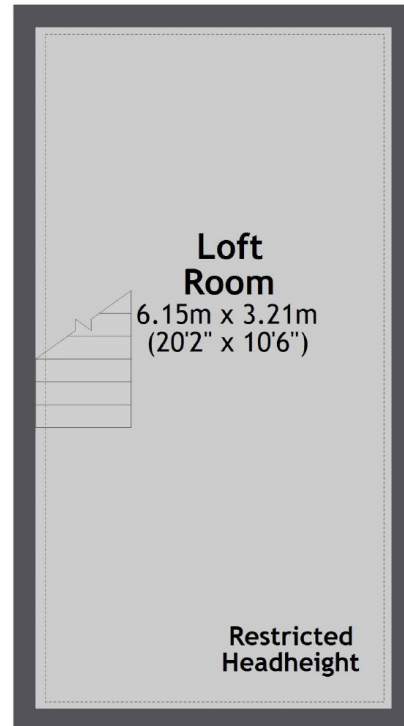
Warwick Road is next to Ealing Common and is within a quarter mile to the Ealing Broadway Centre and the boutique shops and restaurants on South Ealing Road.

- First Floor • Period Conversion • Share Of Freehold •
- Modern Bathroom • Ealing Broadway • Communal Gardens •

## First Floor



## Second Floor



**Main area: Approx. 23.3 sq. metres (251.1 sq. feet)**  
Plus loft room, approx. 19.7 sq. metres (212.5 sq. feet)

Robertson Smith & Kempson Ealing Sales  
1 The Broadway, London,  
W5 2NT  
020 8840 7677  
[ealingsales@robertsonsmithandkempson.co.uk](mailto:ealingsales@robertsonsmithandkempson.co.uk)

Energy Rating: C. We aim to make our particulars both accurate and reliable. However they are not guaranteed; nor do they form part of an offer or contract. If you require clarification on any points then please contact us, especially if you're traveling some distance to view. Please note that appliances and heating systems have not been tested and therefore no warranties can be given as to their good working order.