



Chatsworth Road, W5

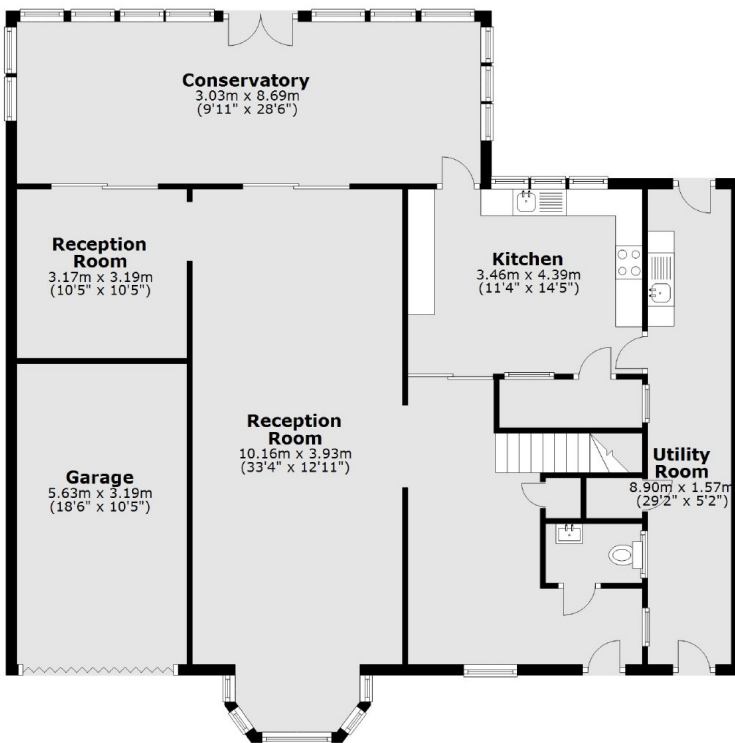
£1,038 pw (£4,500 pcm)

This large detached house offers just over 2,500 sq ft of living space and has multiple reception rooms, garage, large garden, conservatory and five bedrooms with three bathrooms.

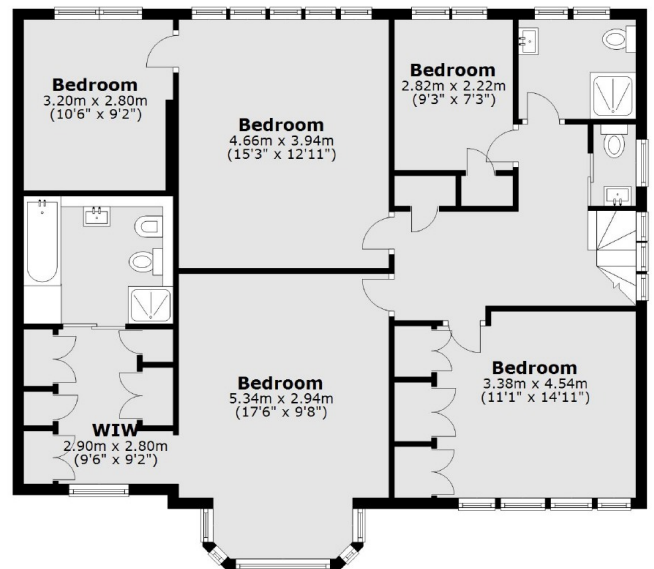
Chatsworth Road is in the Haymills area of Ealing, close to various transport links and amenities.

- Five Bedrooms • Dressing Room • Garage •
- Large Garden • Detached • Utility Room •

Ground Floor



First Floor



Main area: Approx. 235.0 sq. metres (2529.1 sq. feet)
Plus garages, approx. 17.9 sq. metres (193.1 sq. feet)

Robertson Smith & Kempson Ealing Lettings
1 The Broadway, London, W5
2NT
020 8840 7885
ealinglettings@robertsonsmithandkempson.co.uk

Energy Rating: D. We aim to make our particulars both accurate and reliable. However they are not guaranteed; nor do they form part of an offer or contract. If you require clarification on any points then please contact us, especially if you're traveling some distance to view. Please note that appliances and heating systems have not been tested and therefore no warranties can be given as to their good working order.