

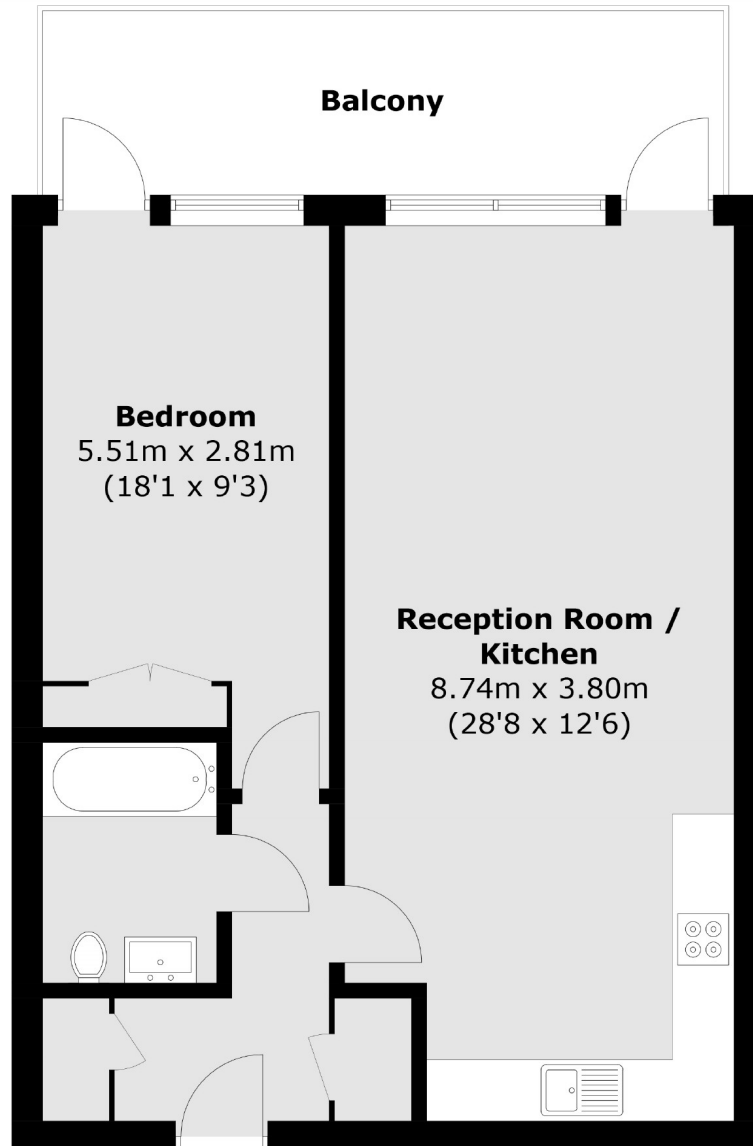


Northcote Avenue, W5

£425,000

A large one double bedroom flat with sun-trapped secluded balcony and a spacious kitchen/diner, attractively offered onto the market with no onward chain.

Ideally located with Ealing Broadway (Elizabeth Line), Ealing Common and North Ealing station within walking distance. A range of shops and amenities on your doorstep.



Total area (approx.): 59.5 sq. m (640.4 sq. ft)
Balcony (approx.): 12.0 sq. m (129.2 sq. ft)

Robertson Smith & Kempson Ealing Sales
1 The Broadway, London,
W5 2NT
020 8840 7677
ealingsales@robertsonsmithandkempson.co.uk

Energy Rating: B. We aim to make our particulars both accurate and reliable. However they are not guaranteed; nor do they form part of an offer or contract. If you require clarification on any points then please contact us, especially if you're traveling some distance to view. Please note that appliances and heating systems have not been tested and therefore no warranties can be given as to their good working order.