

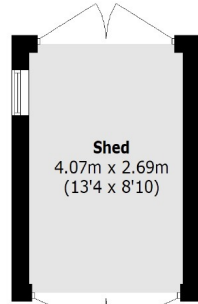


Pitshanger Lane, W5

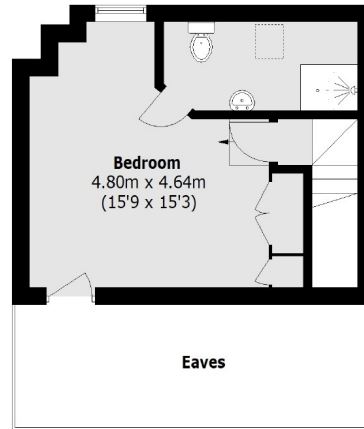
£805,000

Arranged over three floors, a four bedroom family home in the much sought after Brentham Estate. With four bedrooms, two bathrooms, period features and a large well-maintained garden.

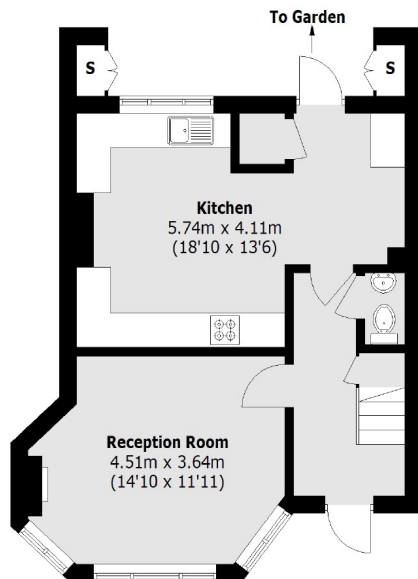
Pitshanger Lane has a wide array of restaurants, bakeries and convenience stores. Transport links include Hanger Lane (Central Line) and numerous bus routes, the property is also very close to Pitshanger Park and Ealing Golf Club.



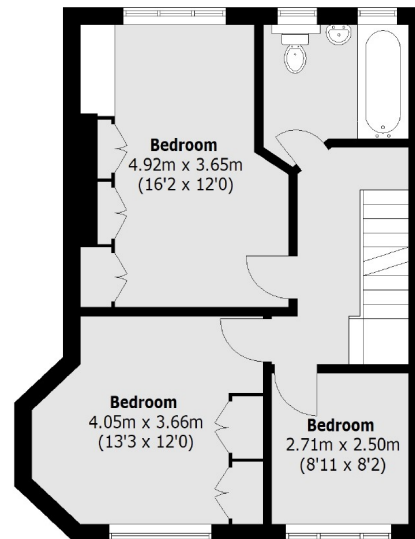
(Not Shown In Actual Location / Orientation)



Second Floor



Ground Floor



First Floor

Total area (approx.): 122.5 sq. m (1318.5 Sq. ft)
(Excluding Eaves)
Shed: 11.7 sq. m (125.9 Sq. ft)
Stores: 0.9 sq. m (9.6 Sq. ft)

Robertson Smith & Kempson Ealing Sales
1 The Broadway, London,
W5 2NT
020 8840 7677
ealingsales@robertsonsmithandkempson.co.uk

Energy Rating: D. We aim to make our particulars both accurate and reliable. However they are not guaranteed; nor do they form part of an offer or contract. If you require clarification on any points then please contact us, especially if you're traveling some distance to view. Please note that appliances and heating systems have not been tested and therefore no warranties can be given as to their good working order.