

## Plot 4 The Old Riding School, Park Lane, Ramsden Heath, Billericay, CM11 1NH Asking Price £1,100,000

- FOUR BEDROOMS
- FAMILY BATHROOM & W.C
- GARAGE, CARPORT AND PARKING
- ICW 10 YEAR BUILD WARRANTY
- REAR GARDEN WITH VIEWS OVER FIELDS
- TWO EN-SUITES
- A GATED DEVELOPMENT OF JUST SIX NEW DETACHED PROPERTIES
- VILLAGE LOCATION
- OPEN PLAN KITCHEN / DINER
- BI-FOLDING DOORS TO REAR GARDEN



## Viewings

Viewings by arrangement only. Call 01277 626 541 to make an appointment.

## Council Tax Band:

C

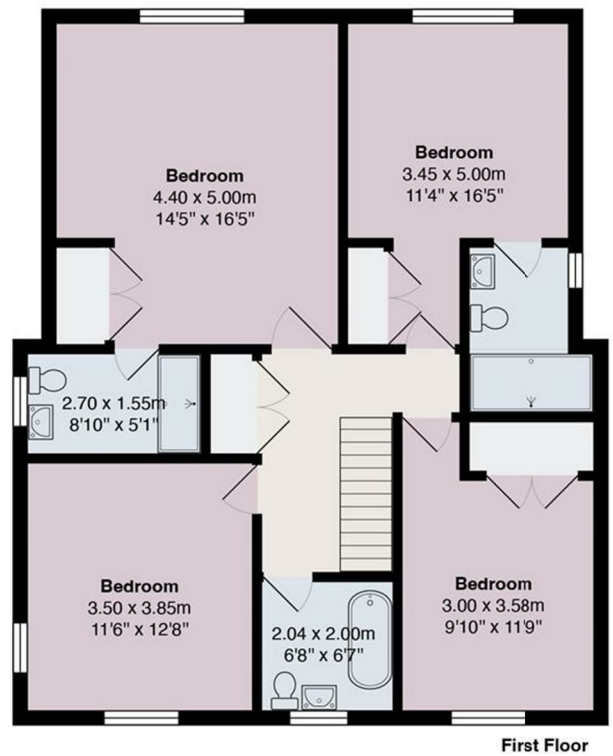
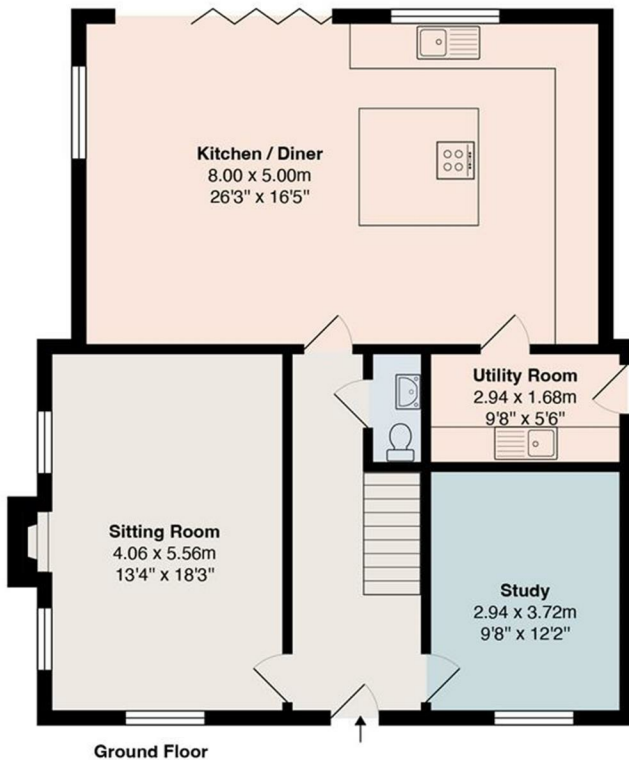
## EPC Rating:

Energy Efficiency Rating		Current	Potential
Very energy efficient - lower running costs			
(92 plus)	A		
(81-91)	B		
(69-80)	C		
(55-68)	D		
(39-54)	E		
(21-38)	F		
(1-20)	G		
Not energy efficient - higher running costs			
England & Wales		EU Directive 2002/91/EC	



## 4 The Old Riding School, Ramsden Heath

Total Area: 181.6 m<sup>2</sup> ... 1955 ft<sup>2</sup>



All measurements are approximate and for display purposes only