



**Price**

**£1,400 PCM**

Fees Apply



Available 17/01/26

**Sandpiper Close  
Greenhithe DA9**

*Wards*

Helping you move forwards





## Main Features

Second floor flat

Juliet Balcony

One allocated parking space

Walking distance to Greenhithe railway station

Nearby to Bluewater shopping centre

Situated on the Waterstone Park development

## Accommodation

Lounge 4.27m x 4.00m

Kitchen 1.75m x 3.13m

Bedroom 1 2.96m x 3.58m

Bedroom 2 1.83m x 3.26m

Bathroom 1.88m x 1.98m



**Deposit required is £1,615.38**  
**Dartford District - Council Tax Band Tax Band C**

Renting a property is a big commitment and we recommend that you visit the local authority website and these websites which offer helpful information and advice about letting

[www.gov.uk/government/publications/how-to-rent](http://www.gov.uk/government/publications/how-to-rent)

[www.gov.uk/private-renting](http://www.gov.uk/private-renting)

[www.wardsofkent.co.uk/renting/tenancy-fees-individuals/](http://www.wardsofkent.co.uk/renting/tenancy-fees-individuals/)

[www.gov.uk/green-deal-energy-saving-measures](http://www.gov.uk/green-deal-energy-saving-measures)

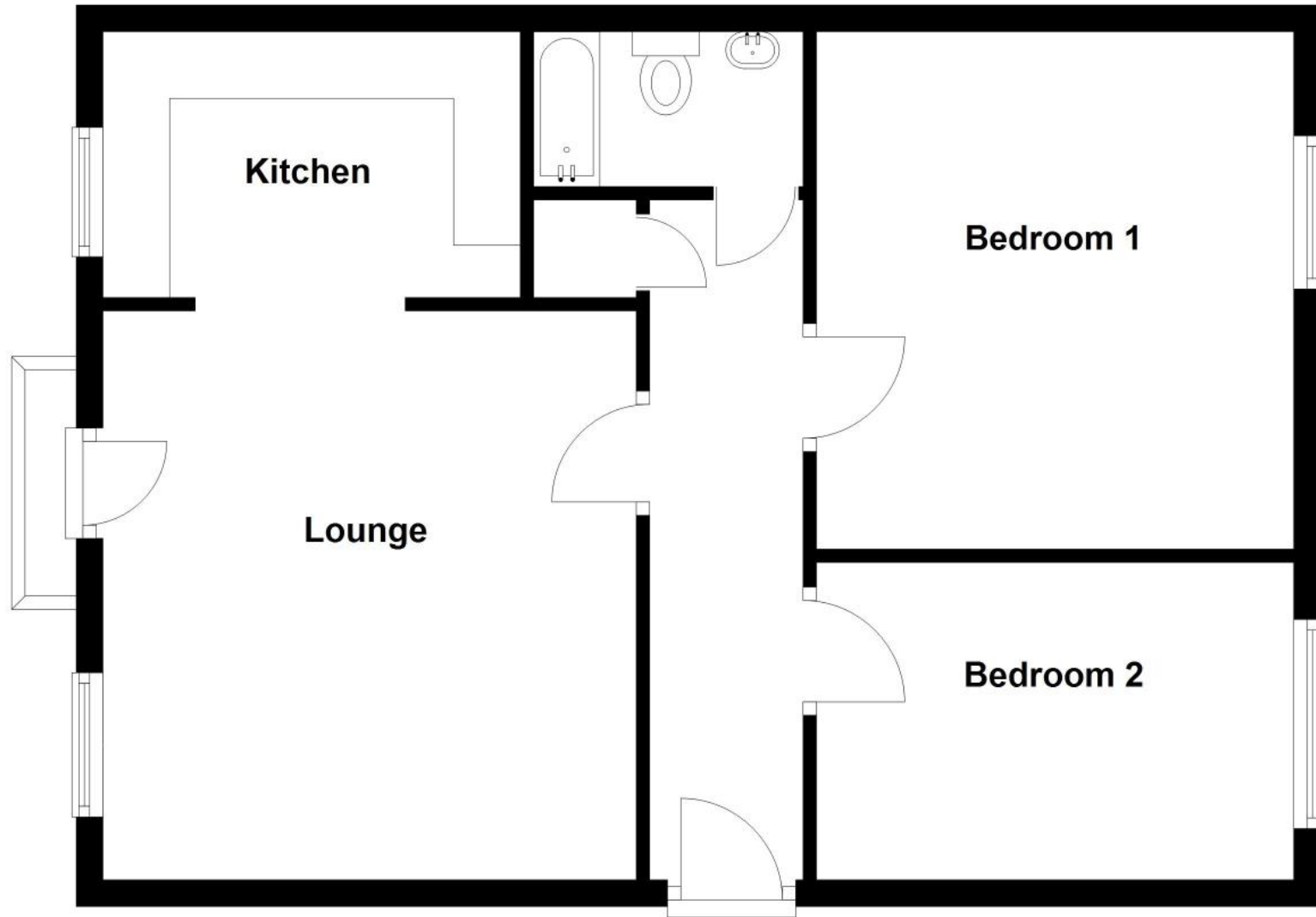
**Call Dartford 01322 311291 ■ [wardsofkent.co.uk](http://wardsofkent.co.uk)**

IMPORTANT INFORMATION: Please contact our Lettings Team who will confirm the total costs involved in renting this property. For clarification, we wish to inform the prospective tenant that we have prepared these details as a general guide. The agent has not carried out a detailed survey nor tested the services, appliances, or specific fittings (unless otherwise stated), and no warranty can be given as to their condition. All room measurements are taken at floor level. We strongly recommend that all the information which we provide about the property is verified by yourself and your advisers. The contents of this publication are © Wards, 2015. Wards is a trading name of Arun Estates Limited Registered in England No. 2597969



## Second Floor

Approx. 52.8 sq. metres (568.1 sq. feet)



Total area: approx. 52.8 sq. metres (568.1 sq. feet)