



Price

£900 PCM

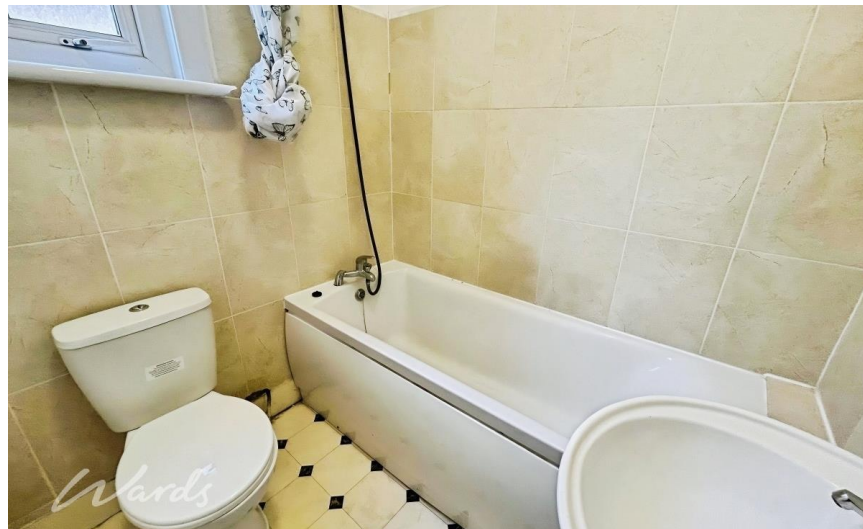
Fees Apply



Available 19/09/25

**Pelham Road
Gravesend DA11**

Wards
Helping you move forwards



Main Features

Available to move in this month

One bedroom apartment

Fibre broadband ready

Moments from Gravesend Train Station (High Speed to London)

Close to town centre shops, cafés, and amenities

Communal Garden

Accommodation



Deposit required is £1,038.46
Gravesham District - Council Tax Band Tax Band A

Renting a property is a big commitment and we recommend that you visit the local authority website and these websites which offer helpful information and advice about letting

www.gov.uk/government/publications/how-to-rent

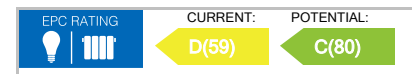
www.gov.uk/private-renting

www.wardsofkent.co.uk/renting/tenancy-fees-individuals/

www.gov.uk/green-deal-energy-saving-measures

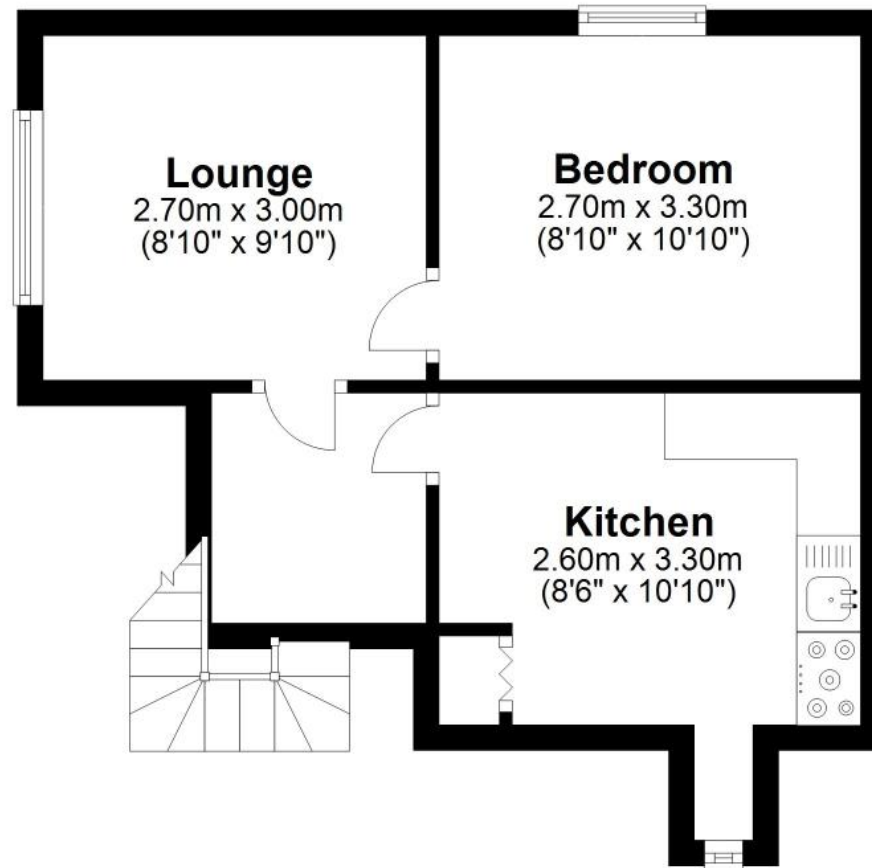
Call Dartford 01322 311291 ■ wardsofkent.co.uk

IMPORTANT INFORMATION: Please contact our Lettings Team who will confirm the total costs involved in renting this property. For clarification, we wish to inform the prospective tenant that we have prepared these details as a general guide. The agent has not carried out a detailed survey nor tested the services, appliances, or specific fittings (unless otherwise stated), and no warranty can be given as to their condition. All room measurements are taken at floor level. We strongly recommend that all the information which we provide about the property is verified by yourself and your advisers. The contents of this publication are © Wards, 2015. Wards is a trading name of Arun Estates Limited Registered in England No. 2597969



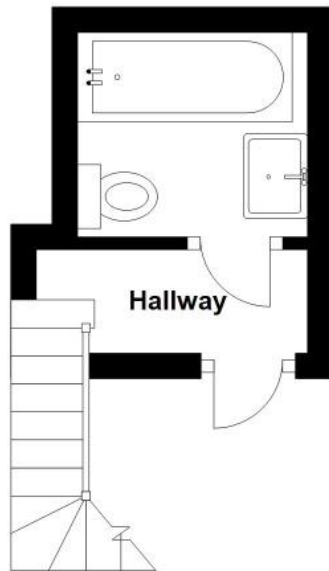
First Floor

Approx. 30.0 sq. metres (322.8 sq. feet)



Ground Floor

Approx. 4.8 sq. metres (51.5 sq. feet)



Total area: approx. 34.8 sq. metres (374.3 sq. feet)