



Available with
no deposit

Price
£2,500 PCM

Dale Street Dartford
DA1

Fees Apply



Available 08/03/25

Wards
Helping you move forwards

Main Features

- Beautiful mid-terrace townhouse
- Driveway
- Four double bedrooms
- Two reception rooms
- Downstairs WC and en-suite to main bedroom
- Walking distance to Dartford station



Deposit required is £2,884.62
Dartford District - Council Tax Band Tax Band E

Accommodation

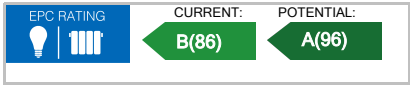
- Entrance Hall
- Kitchen/Lounge/Diner 6.61m x 3.96m
- Reception Room 2.91m x 1.91m
- WC 1.61m x 0.83m
- Bedroom 1 3.96m x 3.08m
- En-Suite Shower Room 2.15m x 1.62
- Bedroom 2 3.96m x 3.70m
- Bedroom 3 3.96m x 3.36m
- Bedroom 4 3.96m x 3.43m
- Bathroom 2.14m x 1.75m



Renting a property is a big commitment and we recommend that you visit the local authority website and these websites which offer helpful information and advice about letting

www.gov.uk/government/publications/how-to-rent
www.gov.uk/private-renting

www.wardsokent.co.uk/renting/tenancy-fees-individuals/
www.gov.uk/green-deal-energy-saving-measures



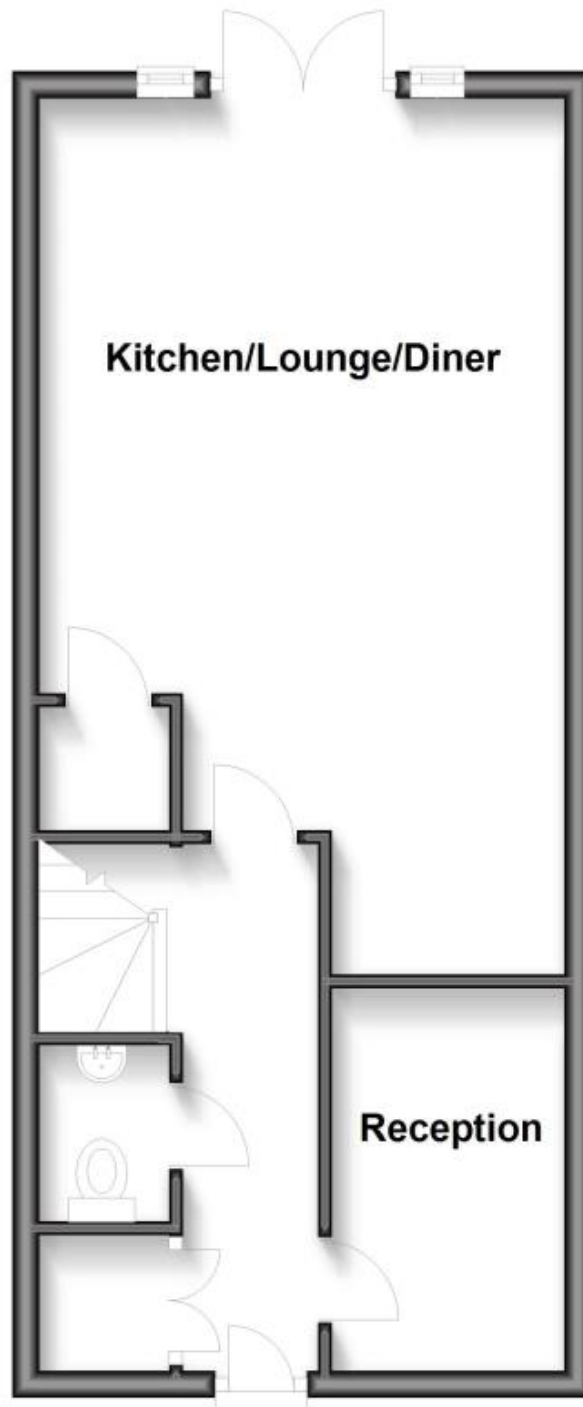
Call Dartford 01322 311291 ■ wardsokent.co.uk

IMPORTANT INFORMATION: Please contact our Lettings Team who will confirm the total costs involved in renting this property. For clarification, we wish to inform the prospective tenant that we have prepared these details as a general guide. The agent has not carried out a detailed survey nor tested the services, appliances, or specific fittings (unless otherwise stated), and no warranty can be given as to their condition. All room measurements are taken at floor level. We strongly recommend that all the information which we provide about the property is verified by yourself and your advisers. The contents of this publication are © Wards, 2015. Wards is a trading name of Arun Estates Limited Registered in England No. 2597969



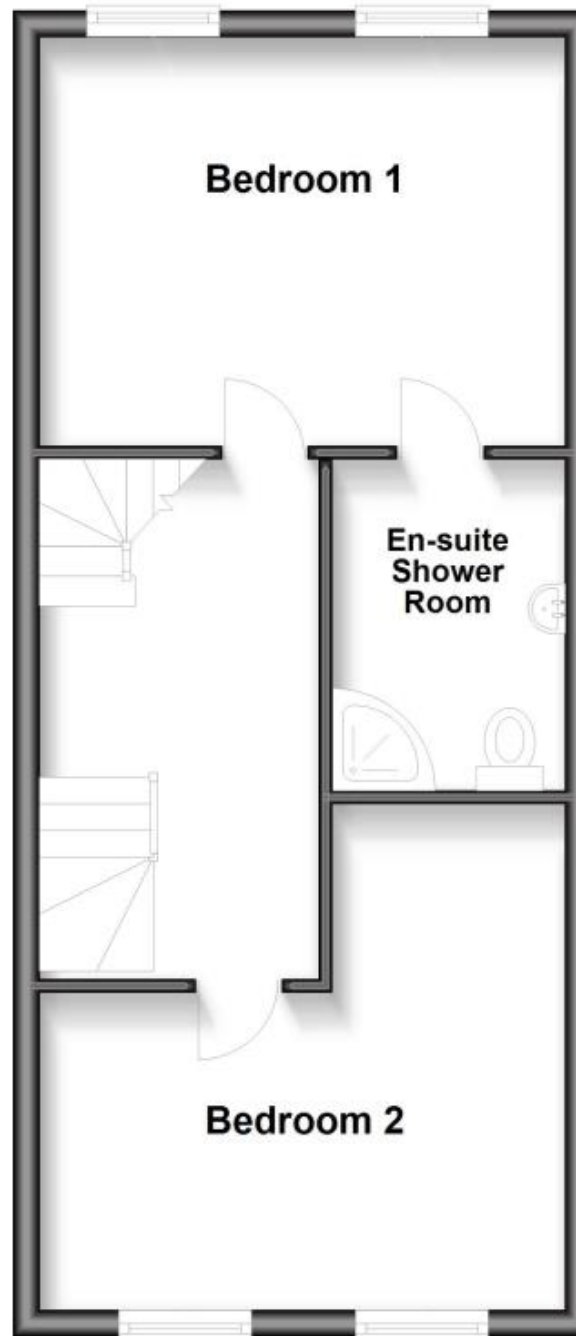
Ground Floor

Approx. 38.5 sq. metres (414.3 sq. feet)



First Floor

Approx. 37.1 sq. metres (399.2 sq. feet)



Second Floor

Approx. 37.7 sq. metres (405.7 sq. feet)

