



## Price

£2,200 PCM

Fees Apply

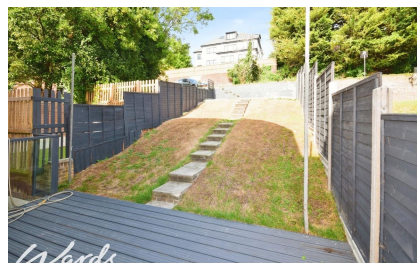


Available 31/08/24

Cobham Terrace Bean  
Road DA9

*Wards*

Helping you move forwards



## Main Features

- Semi-detached family home
- Refurbished & modernised throughout
- Two bathrooms
- Driveway
- Great motorway links
- Stones throw away from Bluewater



Deposit required is £2,538.46  
Dartford District - Council Tax Band Tax Band D

Renting a property is a big commitment and we recommend that you visit the local authority website and these websites which offer helpful information and advice about letting

[www.gov.uk/government/publications/how-to-rent](http://www.gov.uk/government/publications/how-to-rent)

[www.gov.uk/private-renting](http://www.gov.uk/private-renting)

[www.wardsofkent.co.uk/renting/tenancy-fees-individuals/](http://www.wardsofkent.co.uk/renting/tenancy-fees-individuals/)

[www.gov.uk/green-deal-energy-saving-measures](http://www.gov.uk/green-deal-energy-saving-measures)

Call Dartford 01322 311291 ■ [wardsofkent.co.uk](http://wardsofkent.co.uk)

IMPORTANT INFORMATION: Please contact our Lettings Team who will confirm the total costs involved in renting this property. For clarification, we wish to inform the prospective tenant that we have prepared these details as a general guide. The agent has not carried out a detailed survey nor tested the services, appliances, or specific fittings (unless otherwise stated), and no warranty can be given as to their condition. All room measurements are taken at floor level. We strongly recommend that all the information which we provide about the property is verified by yourself and your advisers. The contents of this publication are © Wards, 2015. Wards is a trading name of Arun Estates Limited Registered in England No. 2597969

## Accommodation

### Entrance Hall

Lounge 3.51m x 3.41m

### Balcony

Kitchen 3.48m x 3.19m

Bedroom One 3.43m x 3.52m

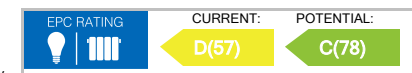
Bedroom Two 3.53m x 3.25m

Bathroom first floor 1.35m x 1.82m

Bedroom Three 3.54m x 3.23m

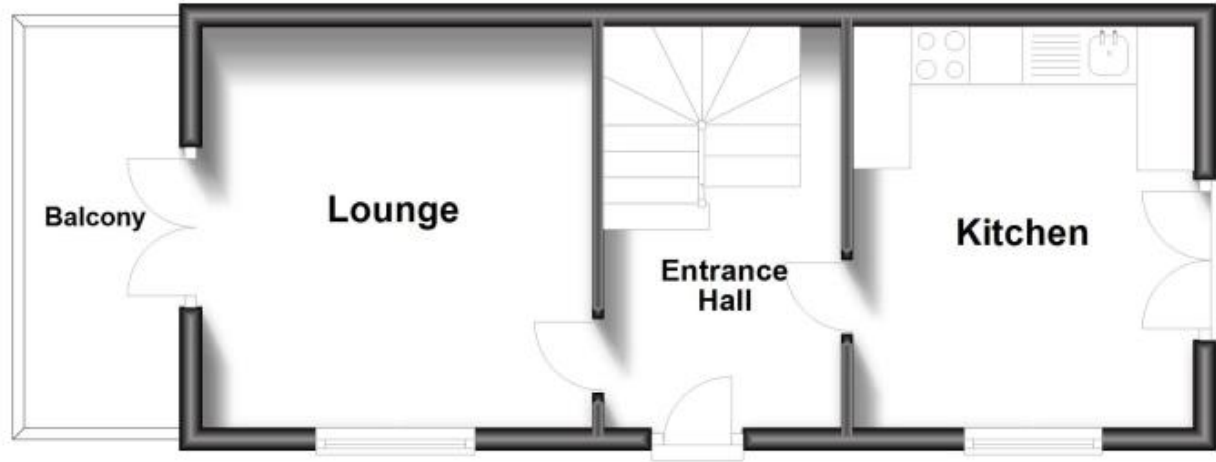
Bedroom Four 3.52m x 3.46m

Bathroom 2nd floor 1.31m x 1.91m



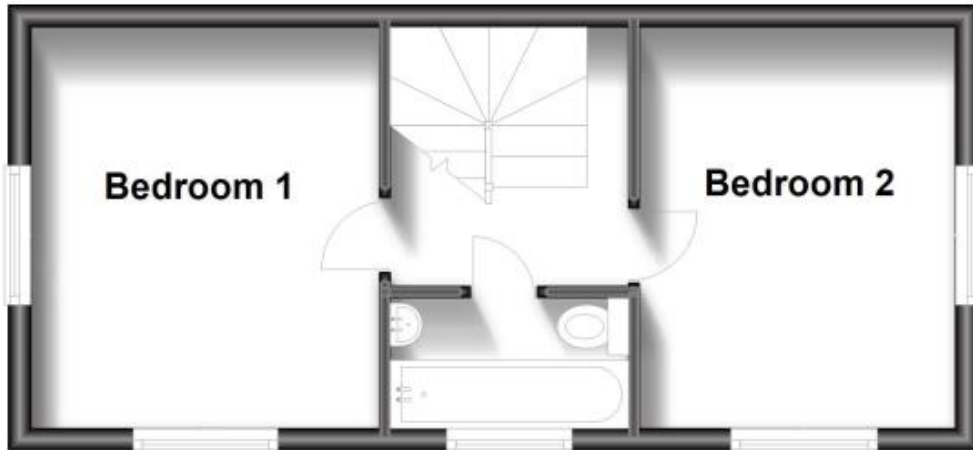
## Ground Floor

Approx. 30.4 sq. metres (327.7 sq. feet)



## First Floor

Approx. 28.4 sq. metres (305.6 sq. feet)



## Second Floor

Approx. 28.4 sq. metres (305.6 sq. feet)

