



Price

£1,900 PCM

Fees Apply

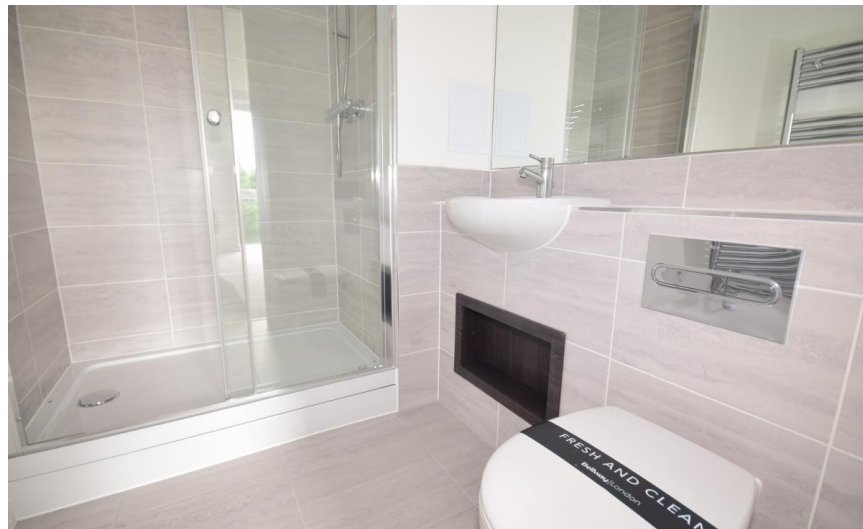
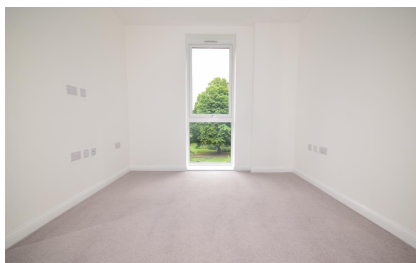


Available 13/07/24

Truman Way Dartford
DA1

Wards

Helping you move forwards



Main Features

- **BRAND NEW third floor apartment**
- **Balcony overlooking Dartford park**
- **Allocated parking for one car**
- **Ample storage space throughout**
- **Completed to an exceptional standard**
- **Close proximity to Dartford train station**

Accommodation

Entrance Hall

Open Plan Lounge/Kitchen 7,28m x 3.58m

Bedroom 1 3.81m x 2.79m

En-Suite 2.31m x 1.63m

Bedroom 2 3.81m x 3.44m

Bathroom 2.05m x 2.19m

Balcony



Deposit required is £2,192.31
- Council Tax Band N/A

Renting a property is a big commitment and we recommend that you visit the local authority website and these websites which offer helpful information and advice about letting

www.gov.uk/government/publications/how-to-rent

www.gov.uk/private-renting

www.wardsofkent.co.uk/renting/tenancy-fees-individuals/

www.gov.uk/green-deal-energy-saving-measures

Call Dartford 01322 311291 ■ wardsofkent.co.uk

IMPORTANT INFORMATION: Please contact our Lettings Team who will confirm the total costs involved in renting this property. For clarification, we wish to inform the prospective tenant that we have prepared these details as a general guide. The agent has not carried out a detailed survey nor tested the services, appliances, or specific fittings (unless otherwise stated), and no warranty can be given as to their condition. All room measurements are taken at floor level. We strongly recommend that all the information which we provide about the property is verified by yourself and your advisers. The contents of this publication are © Wards, 2015. Wards is a trading name of Arun Estates Limited Registered in England No. 2597969



Third Floor

