



- Three Bedrooms
- Mid-Terrace House
- Parking & Garage En-Bloc
- Large Conservatory

Crown Close, Sheering, Bishop's Stortford, Hertfordshire, CM22 7NX

Asking Price Of £330,000

A THREE BEDROOM MID-TERRACE with parking for two cars and garage en-bloc. The ground floor features an open plan kitchen diner with French doors leading to the lounge. At the rear of the lounge there is a large conservatory/extension providing lots of natural lighting. Upstairs benefits from two double bedrooms, a single bedroom and luxury shower room. The rear garden is West facing with lots of potential. Viewings advised.





## Property Description

A THREE BEDROOM MID-TERRACE with parking for two cars and garage en-bloc. The ground floor features an open plan kitchen diner with French doors leading to the lounge. At the rear of the lounge there is a large conservatory/extension providing lots of natural lighting. Upstairs benefits from two double bedrooms, a single bedroom and luxury shower room. The rear garden is West facing with lots of potential. Viewings advised.

### FRONT

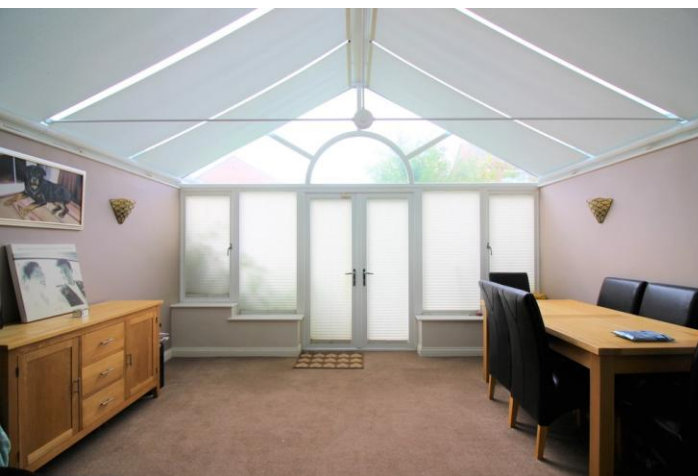
Block paved front with parking for two cars.

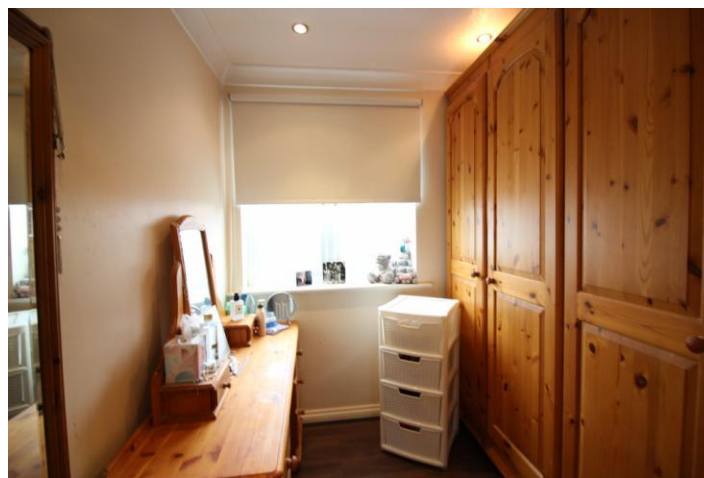
### ENTRANCE PORCH

UPVC double glazed porch. UPVC double glazed windows and doors to street and to property.

### KITCHEN DINER

16' 00" x 11' 10" (4.88m x 3.61m) UPVC double glazed windows and door to porch. Tiled flooring. Radiator to wall. Alarm panel to wall (un-tested). Storage cupboard. Modern wall and base units with laminate worktops. 1.5 stainless steel sink and drainer. Plumbing for washing machine and dishwasher. Space for freestanding cooker and fridge freezer. Built-in storage cupboard. Recessed spotlights in ceiling. Interior French doors to lounge.





### LOUNGE

16' 00" x 11' 07" (4.88m x 3.53m) Radiator to wall. Stairs to first floor. Recessed spotlights in ceiling. Open-plan to conservatory. Interior French doors to kitchen.

### CONSERVATORY

14' 09" x 12' 02" (4.5m x 3.71m) UPVC double glazed conservatory. Radiator to wall. Open plan to living room. Doors leading to garden.



### FIRST FLOOR LANDING

Stairs to ground floor. Airing cupboard. Loft hatch. Internal doors to shower room and bedrooms.

### BEDROOM ONE

12' 07" x 9' 01" (3.84m x 2.77m) UPVC double glazed window to rear, radiator to wall. Recessed spotlights in ceiling. Internal door to landing.

### BEDROOM TWO

10' 09" x 7' 09" (3.28m x 2.36m) UPVC double glazed window to front, radiator to wall. Recessed spotlights in ceiling. Internal door to landing.

### BEDROOM THREE

9' 02" x 6' 06" (2.79m x 1.98m) UPVC double glazed window to rear, radiator to wall. Recessed spotlights in ceiling. Internal door to landing.



### SHOWER ROOM

7' 08" x 5' 07" (2.34m x 1.7m) Fully tiled suite. Walk-in double shower cubicle with thermostatically controlled shower. White vanity sink and WC. Heated towel rail. Electric shaver sockets. Extractor fan. Recessed spotlights in ceiling. UPVC double glazed window (one panel smashed on outer glazing). Internal door to landing.

### GARDEN

Block paved patio and over-grown vegetation. Great potential.

### GARAGE

Single garage en-bloc.