



- Two Bedrooms
- Terraced House
- Old Harlow Location
- Large Garden

Chippingfield, Old Harlow, Essex, CM17 0DJ

Asking Price Of £280,000

A TWO DOUBLE BEDROOM TERRACED PROPERTY overlooking the cricket grounds in Old Harlow. The property features a large west facing garden, open plan kitchen/dining room, separate lounge and useful lean to conservatory and cloakroom. There is gas heating via radiators, UPVC double glazed windows and built in wardrobes to the main bedroom. The bath has been removed and a shower cubicle has been installed. Viewings advised.





## Property Description

A TWO DOUBLE BEDROOM TERRACED PROPERTY overlooking the cricket grounds in Old Harlow. The property features a large west facing garden, open plan kitchen/dining room, seperate lounge and useful lean to conservatory and cloakroom. There is gas heating via radiators, UPVC double glazed windows and built in wardrobes to the main bedroom. The bath has been removed and a shower cubide has been installed. Viewings advised.

### FRONT

Mostly laid to lawn. Concrete slabs leading from road to entrance. Wooden glazed exterior doors to front and side lobby.

### ENTRANCE HALL

Glazed exterior door to front. Stairs to first floor. Internal doors to kitchen and lounge. Radiator to wall.

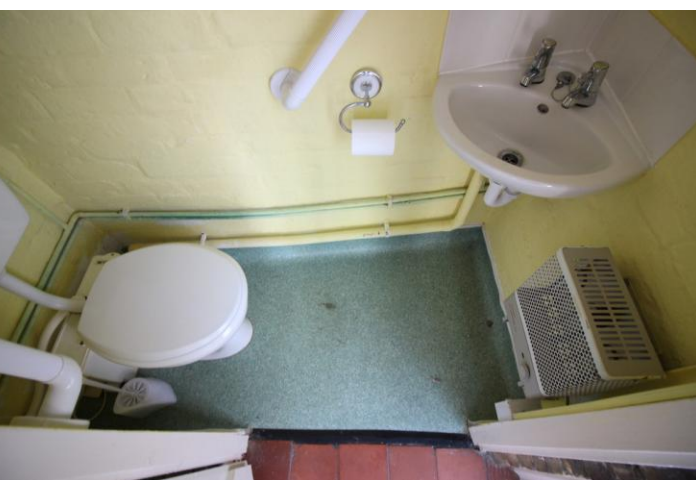
### LOUNGE

15' 05" x 8' 11" (4.7m x 2.72m) Internal doors to kitchen and entrance hall. UPVC double glazed window to rear.

### KITCHEN

16' 04" x 7' 02" (4.98m x 2.18m) Various wall and base units. UPVC double glazed window to front. Two built-in storage cupboards. Internal doors to entrance hall, side lobby, lounge and metal framed glazed door to conservatory. Radiator to wall. Water softener.





### **SIDE LOBBY**

Plumbing for washing machine, space for tumble dryer. External glazed door to street. Internal doors to kitchen and WC.

### **GROUND FLOOR WC**

White low-flush Saniflo toilet. White sink to wall. Extractor fan. Electric heater to wall.

### **LANDING**

Internal doors to bedrooms, bathroom and WC. UPVC double glazed window to front. Loft access.

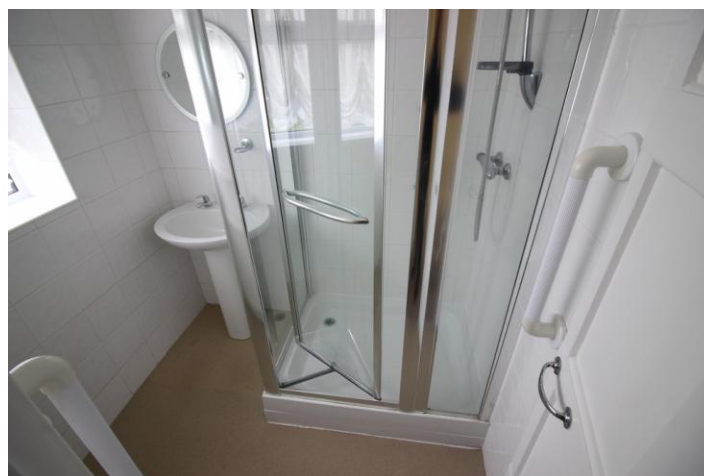


### **BEDROOM ONE**

13' 04" x 9' 08" (4.06m x 2.95m) White fitted wardrobes. UPVC double glazed window to rear. Radiator to wall. Built-in wardrobes. Internal door to landing.

### **BEDROOM TWO**

11' 03" x 10' 04" narrowing to 7' 09" (3.43m x 3.15m) UPVC double glazed window to rear. Radiator to wall. Two built-in storage cupboards/wardrobes (one housing boiler). Internal door to landing.



### **SHOWER ROOM**

5' 09" x 4' 09" (1.75m x 1.45m) UPVC double glazed window to front. Shower cubicle with thermostatic shower. White pedestal sink. Radiator to wall. Internal door to landing.





### FIRST FLOOR WC

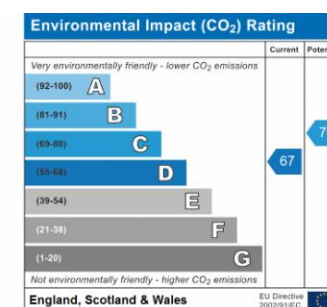
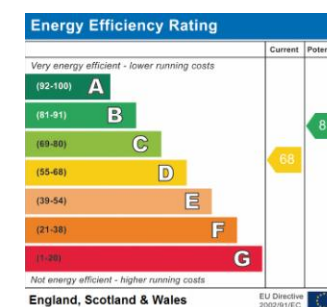
UPVC double glazed window. White WC.

### CONSERVATORY

Glazed metal framed conservatory to rear. Radiator to wall. Electrical socket.

### GARDEN

Patio area by conservatory. Garden mostly laid to lawn with brick shed at rear. Rear access via gate.



Equity House, 4-6 Market Street,  
Harlow, Essex, CM17 0AH

www.centurionproperty.co.uk  
01279 400444  
harlow@centurionproperty.co.uk

Agents Note: Whilst every care has been taken to prepare these particulars, they are for guidance purposes only. All measurements are approximate and are for general guidance purposes only and whilst every care has been taken to ensure their accuracy, they should not be relied upon and potential buyers/tenants are advised to recheck the measurements