



11 Bromford Close, Oxted

In Excess of £720,000

FINE & COUNTRY





11 Bromford Close

Oxtd

A comprehensively upgraded and extended detached property nestling in this friendly and convenient cul de sac just off the green and a short walk from Hurst Green train station. Open day scheduled for Saturday 8th February.

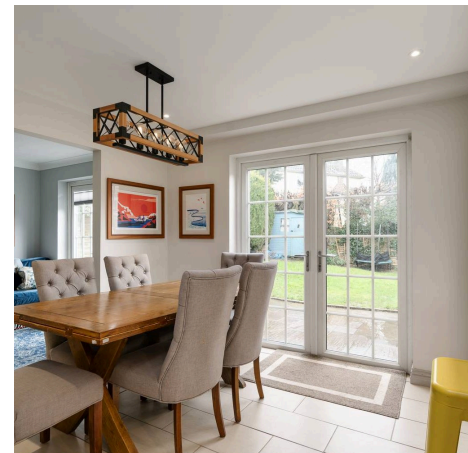
Council Tax band: F

Tenure: Freehold

EPC Energy Efficiency Rating: D

EPC Environmental Impact Rating: E

- Cul-De-Sac Road
- Modern 4 Bedroom Detached House
- Modern Appliances
- Open Plan Kitchen / Diner
- Boiling Tap In Kitchen
- Wren Kitchen
- Flat Plot
- 8 Minute Walk To Hurst Green Station
- New Worcester Boiler
- New Stone Patio





11 Bromford Close

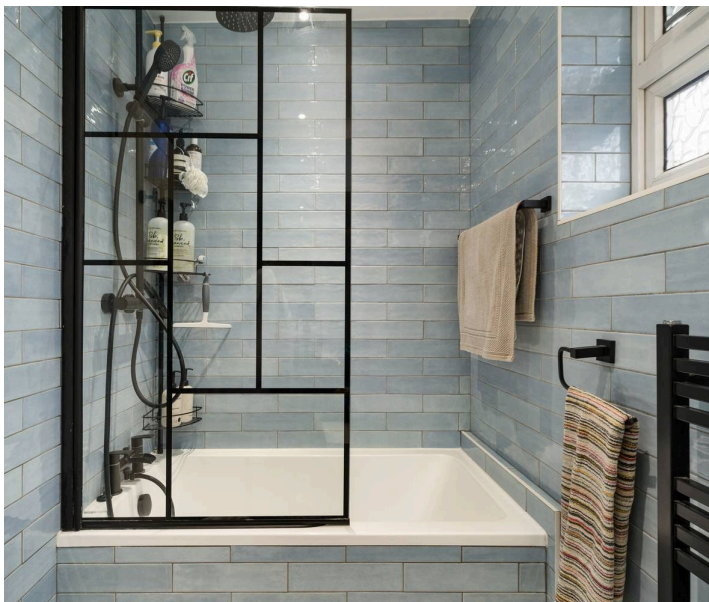
Oxted

Nestled in a convenient cul-de-sac, this recently upgraded 4-bedroom detached house offers a harmonious blend of contemporary elegance and timeless charm. Boasting a range of recent enhancements, this extended property presents a unique opportunity for those seeking comfortable living within a tranquil setting.

Upon entering, you are greeted by a newly renovated Wren kitchen that exudes sophistication and functionality. The heart of the home, this culinary haven is equipped with modern appliances and ample countertops, making it perfect for both intimate gatherings and grand entertaining. The ground floor extension, featuring a large lantern light, floods the space with natural light, creating a warm and inviting ambience.

Flowing seamlessly from the open plan kitchen/ dining space is a snug creating a seamless transition between relaxation and hospitality. In addition a large lounge with new flooring looks out toward the driveway. A separate study/utility room with fitted cupboards provides a quiet room for home working.

The thoughtful design extends to the bedrooms, with each offering a peaceful retreat adorned with new interior doors and fitted wardrobes to three of rooms.





11 Bromford Close

Oxtd

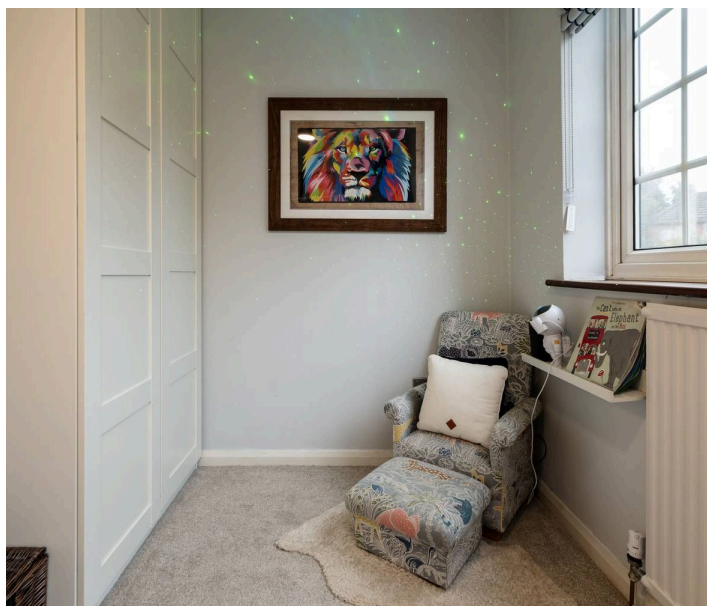
The property also features two elegantly remodelled bathrooms, one being an ensuite shower to the main bedroom at the front of the property.

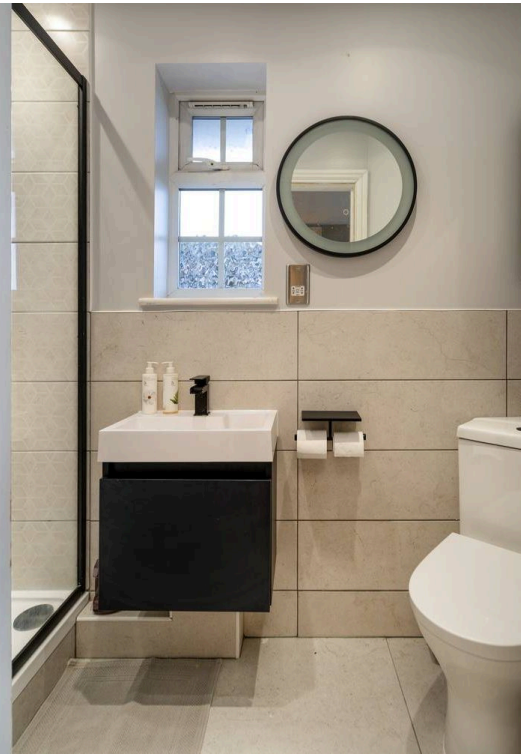
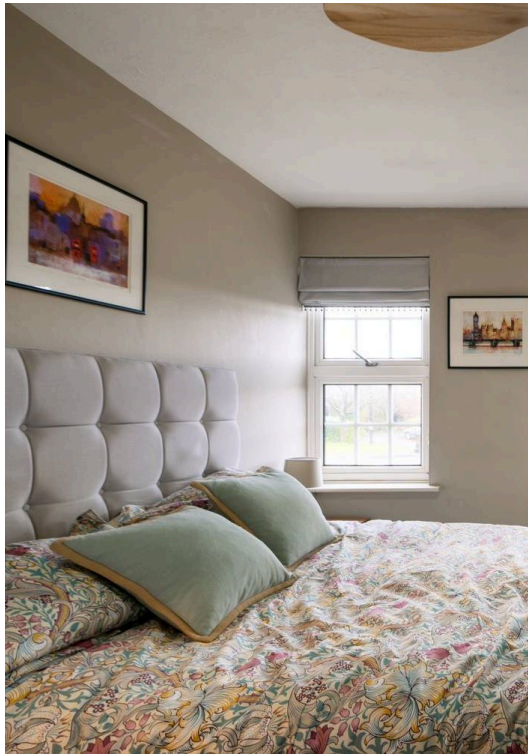
For added convenience and comfort, a new Worcester central heating boiler has been installed, ensuring a cosy environment during the colder months. The house is also fully double glazed.

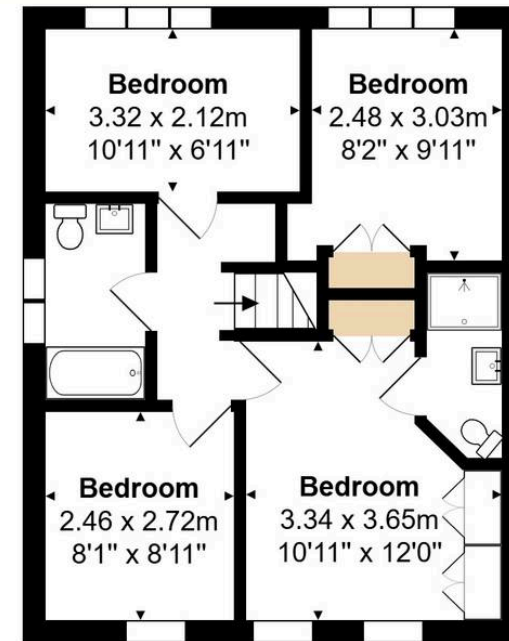
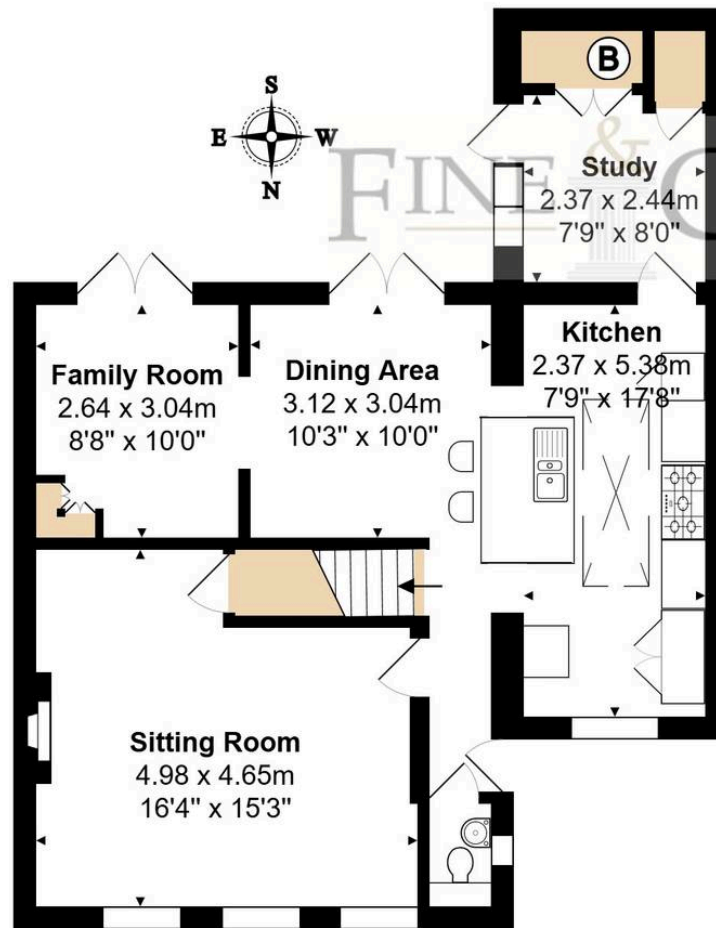
French doors accessing the large newly laid stone terrace and lawn. The garden faces due south and a new fence has been installed to the right hand boundary.

The property is located on a quite, tucked away cul-de-sac road; Within an 8 minutes walk of Hurst Green station, 7 minutes walk from Hollands Sports Club, 5 minutes walk from Hurst Green Park and within a mile of the popular pub The Haycutter.

Don't miss the chance to make this home your own and enjoy living in this friendly neighbourhood. Schedule a viewing for Saturday 8th February.







Bromford Close, Oxted

Total Area: 116.0 sq m ... 1248 sq ft

All measurements are approximate and for display purposes only.



Fine & Country Woldingham & Oxted

7 The Crescent, Station Road, Woldingham

01883 653040

woldingham@fineandcountry.com