



Deauville, Marden Manor, The Crescent, Woldingham - CR3 7DB

Guide Price £500,000

FINE & COUNTRY



Deauville

Marden Manor, Woldingham CR3 7DB

First floor, three bedroom, luxury balcony apartment situated in the heart of this north downs village, adjoining the post office. Lift service and easy level access for village hall and club. Share of freehold in this lovely secure environment. End of chain.

Tenure: Share of Freehold

EPC Energy Efficiency Rating: B

EPC Environmental Impact Rating: B





Deauville

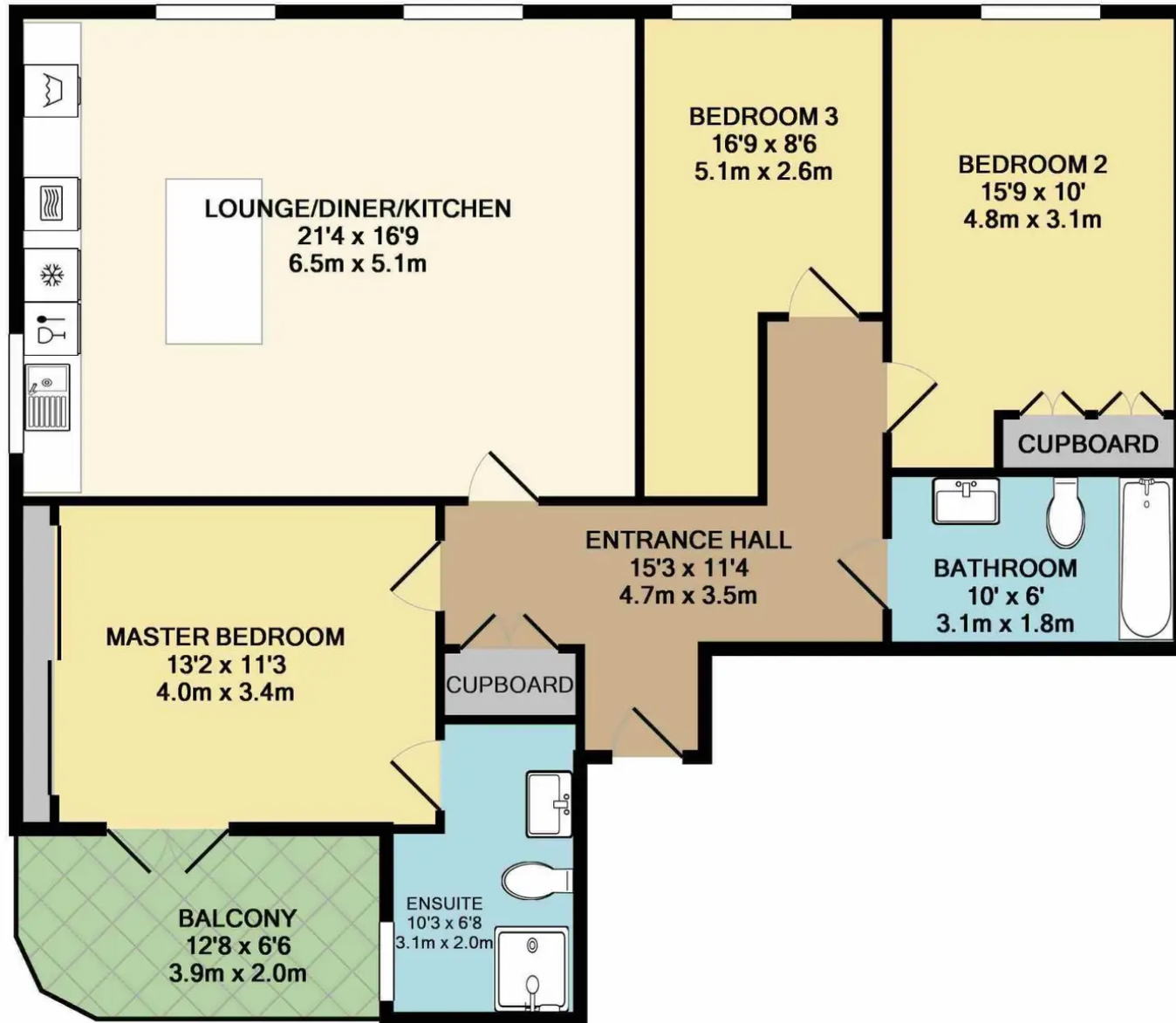
Marden Manor, Woldingham, CR3 7DB

Luxury Three bedroom first floor balcony apartment situated in the heart of the village.

Robust 2018 construction using insulated concrete floors. Quiet electric low maintenance Otis lift service. Under floor wet gas central heating system throughout. Quality double glazing by Origin Windows. Marble flooring to Kitchen/Living rooms. Oak and walnut flooring. Italian Designer bathrooms with marble tiling. Italian Cucine kitchens with Miele appliances and Siemens washer/dryer. Italian fitted wardrobes to bedrooms one and two. Video security entry system. Dimmer 3 phase interior room lighting, Wrought iron work to staircase balustrade with hardwood and marble risers. Balance of LABC 10 year warranty (Local Authority Building Control) 20 year building render guarantee. Security gated access to parking area with LED bollard lighting. 2 allocated spaces . Two Visitors and Two disabled parking spaces. Landlords electricity supply enabling communal area heating via Photovoltaic.







Whilst every attempt has been made to ensure the accuracy of the floor plan contained here, measurements of doors, windows, rooms and any other items are approximate and no responsibility is taken for any error, omission, or mis-statement. This plan is for illustrative purposes only and should be used as such by any prospective purchaser. The services, systems and appliances shown have not been tested and no guarantee as to their operability or efficiency can be given



Fine & Country

Estates Office, 7 The Crescent Station Road, Surrey - CR3 7DB

01883 653040

woldingham@fineandcountry.co.uk

www.fineandcountry.co.uk/woldingham-oxted-and-purley-estate-agents