



22 Thornton Crescent, Coulsdon - CR5 1LH

In Excess of £575,000





22 Thornton Crescent

Coulsdon, Coulsdon

This charming four-bedroom semi-detached home on Thornton Crescent, Coulsdon, offers a warm and inviting living space with a bright lounge/diner, feature fireplace, and patio doors leading to a private garden. The well-equipped kitchen enjoys garden views, while upstairs boasts three double bedrooms, a single room, and a family bathroom with a separate bath and shower. With a large driveway, an enclosed rear garden with a patio and pond, and plenty of potential, this home is perfect for families seeking comfort and convenience.

Council Tax band: D

Tenure: Freehold

EPC Energy Efficiency Rating: E

EPC Environmental Impact Rating: F

- Four Bedrooms
- Peaceful Location
- Great Catchment Area For Schools
- Garage
- Off Street Parking
- Lounge/Diner



Lounge/Dining Room

Kitchen

Entrance Hall

Bedrooms

Bathroom



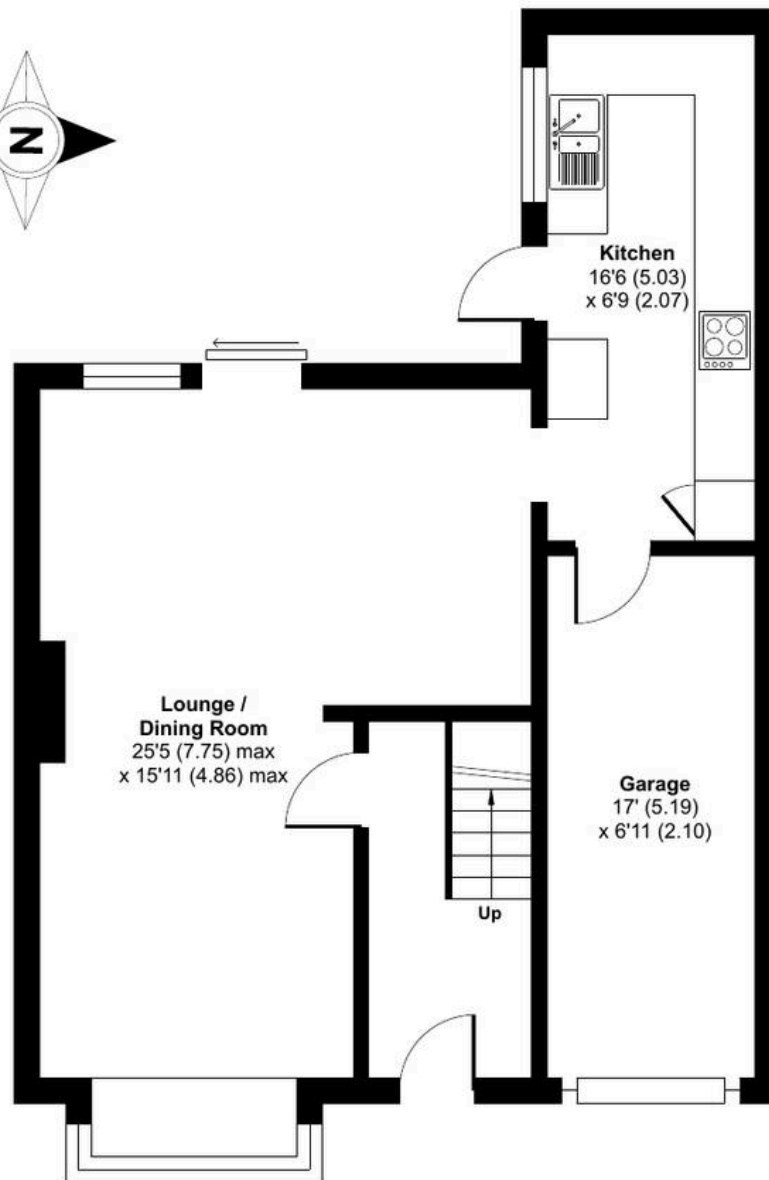
Thornton Crescent, Coulsdon, CR5

Approximate Area = 1000 sq ft / 92.9 sq m

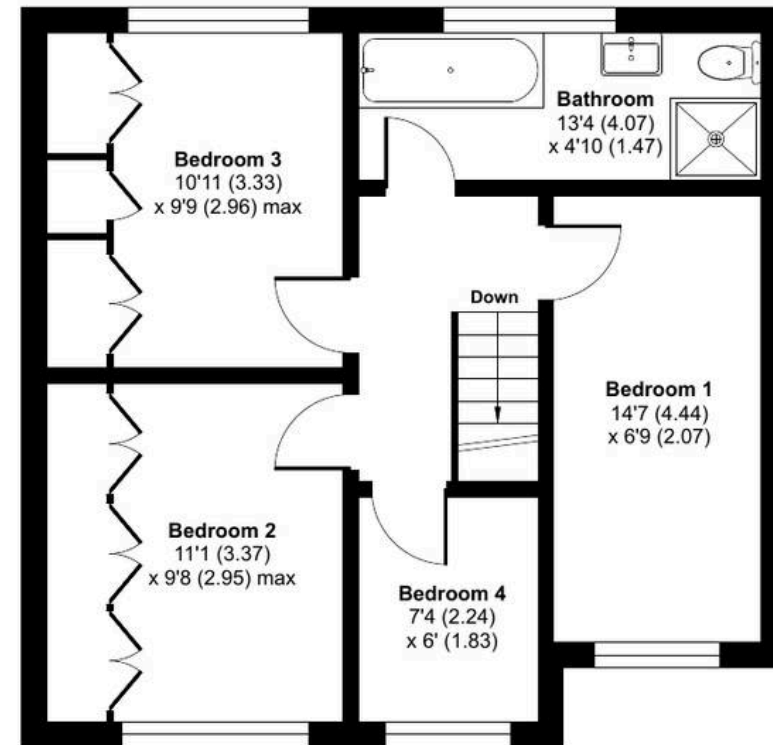
Garage = 116 sq ft / 10.8 sq m

Total = 1116 sq ft / 103.7 sq m

For identification only - Not to scale



GROUND FLOOR



FIRST FLOOR





Park & Bailey Coulsdon

150 Brighton Road, Coulsdon - CR5 2YY

020 8763 8060 • coulsdon@parkandbailey.co.uk • www.parkandbailey.co.uk/