



**School Lane, Higham**

**£1,450 Per Month**

  
**MARTIN&CO**



School Lane, Higham

House - Detached  
2 Bedrooms, 1 Bathroom

£1,450 Per Month

- Two spacious bedrooms
- Modern kitchen/diner
- Large bathroom with bath
- Detached house in Higham
- Driveway for multiple cars
- Quiet rural location
- Close to local amenities
- Large garden
- Viewing recommended
- Available from 20 October 2025

Nestled in the picturesque village of Higham, this beautiful two-bedroom detached house presents a rare opportunity for those seeking a charming and modern home. The property boasts a delightful blend of contemporary style and rural charm.

Spanning an impressive 1,076 square feet, the house features a spacious reception room that invites natural light, creating a warm and welcoming atmosphere. The modern kitchen/diner is perfect for both casual meals and entertaining guests, offering a stylish space to enjoy culinary delights.

The property includes two well-proportioned bedrooms, providing ample space for relaxation. The large bathroom is a standout feature, equipped with both a separate shower and bath, ensuring comfort and convenience for all residents.

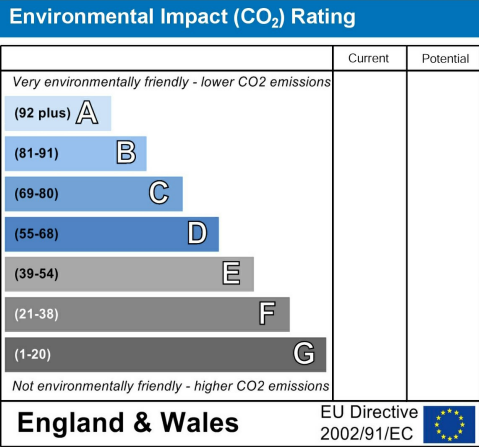
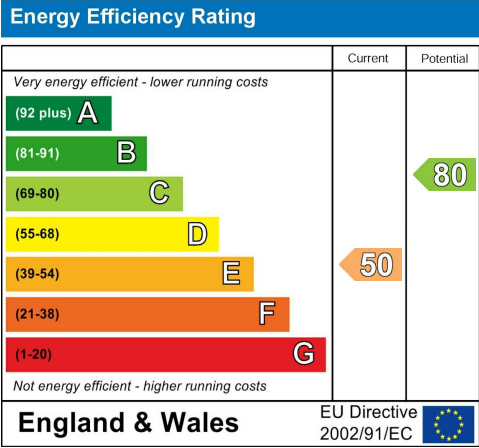
Set on a generous plot, this home benefits from a quiet and quaint private location, ideal for those who appreciate peace and tranquillity. The driveway accommodates parking for up to four vehicles, making it perfect for families or those with multiple cars.

Conveniently located close to local amenities, this property offers the best of both worlds: a serene rural setting with easy access to essential services. Available immediately, this unique detached house is a must-see for anyone looking to embrace a delightful lifestyle in Higham. Don't miss out on this exceptional opportunity to make this charming property your new home.





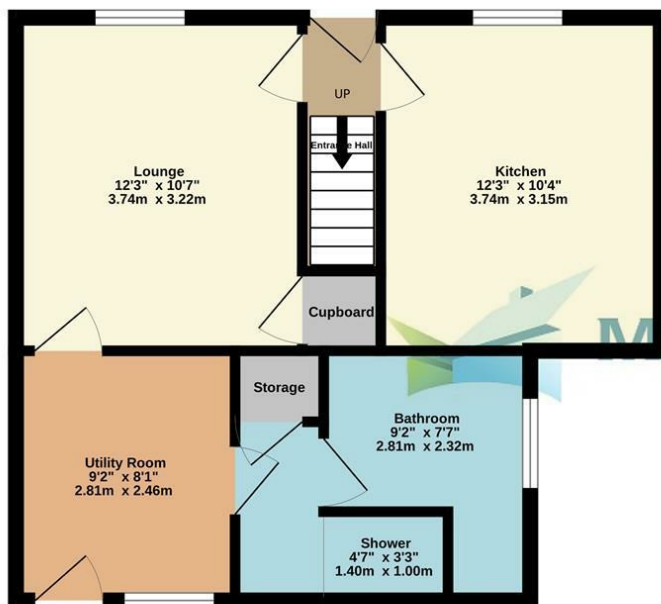




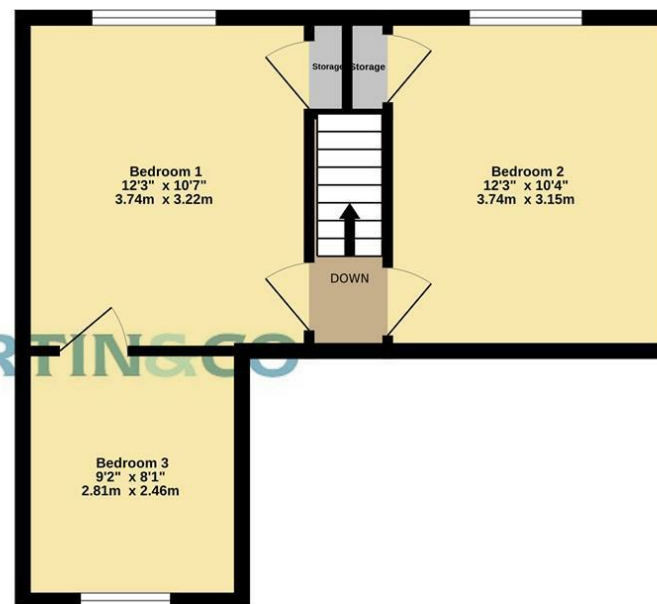




Ground Floor  
467 sq.ft. (43.4 sq.m.) approx.



1st Floor  
367 sq.ft. (34.1 sq.m.) approx.



TOTAL FLOOR AREA : 833 sq.ft. (77.4 sq.m.) approx.

Made with Metropix ©2025

Background User  
161 High Street, Rochester, Kent, ME1 1EH  
01634 838700 . medway@martinco.com

01634 838700  
<http://www.martinco.com>



**Accuracy:** References to the Tenure of a Property are based on information supplied by the Seller. The Agent has not had sight of the title documents. A Buyer is advised to obtain verification from their Solicitor. Items shown in photographs including but not limited to carpets, fixtures and fittings are not included unless specifically mentioned within the sales particulars. They may however be available by separate negotiation. Buyers must check the availability of any property and make an appointment to view before embarking on any journey to see a property. No person in the employment of the agent has any authority to make any representation about the property, and accordingly any information given is entirely without responsibility on the part of the agents, sellers(s) or lessors(s). Any property particulars are not an offer or contract, nor form part of one. **Sonic / laser Tape:** Measurements taken using a sonic / laser tape measure may be subject to a small margin of error. **All**

**Measurements:** All Measurements are Approximate. **Services Not tested:** The Agent has not tested any apparatus, equipment, Fixtures and Fittings or services and so cannot verify that they are in working order or fit for the purpose. A Buyer is advised to obtain verification from their Solicitor or Surveyor.

