



**Yeates Drive, Sittingbourne**

**1 Bedroom Terraced House**

**Guide Price £220,000**





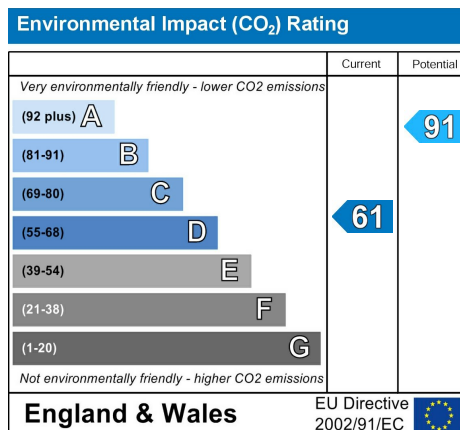
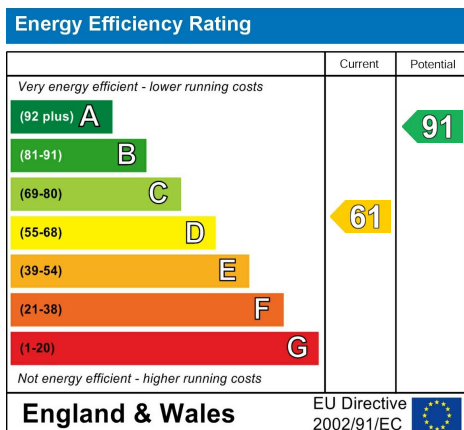
- No Chain
- Perfect for First Time Buyers
- Calling Investors
- 1 Bedroom House
- Green Location
- Parking For 1 vehicle
- EPC D
- Council Tax B

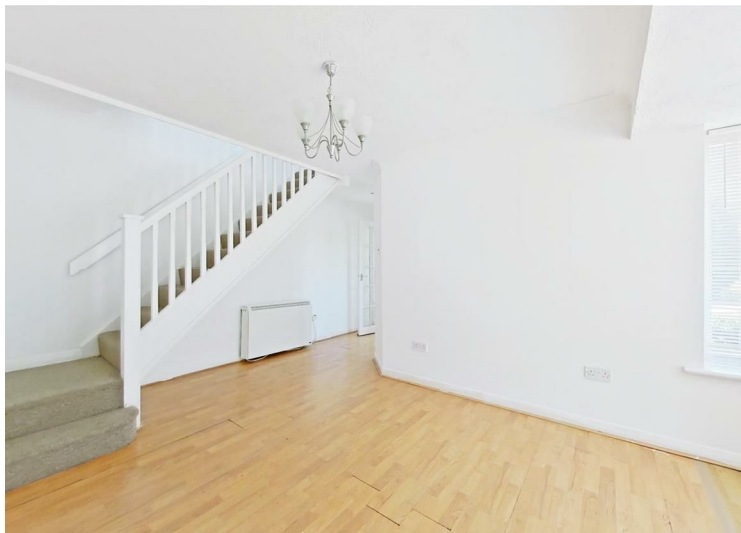
Kitchen  
7'10" x 6'3"

Lounge/Diner  
12'3" x 9'4"

Bedroom 1  
12'3" x 9'4"

Bathroom  
6'3" x 6'3"

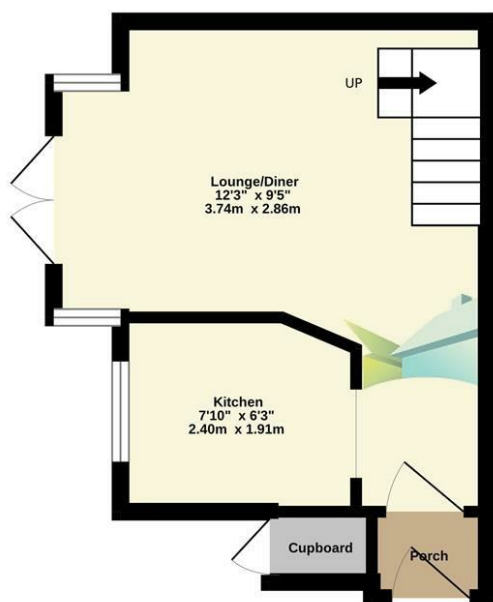




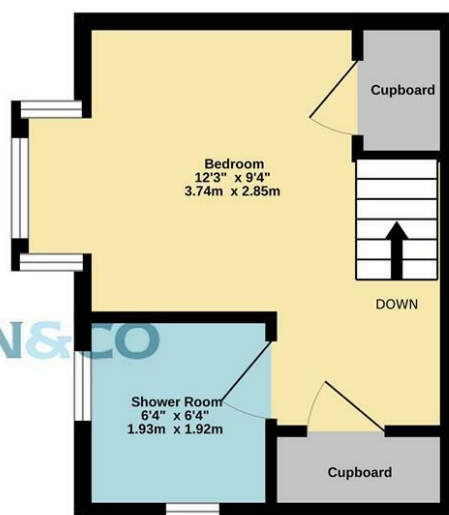
**Ground Floor**  
237 sq.ft. (22.0 sq.m.) approx.



**1st Floor**  
211 sq.ft. (19.6 sq.m.) approx.



MARTIN&CO



**TOTAL FLOOR AREA : 449 sq.ft. (41.7 sq.m.) approx.**  
Made with Metropix ©2025

