



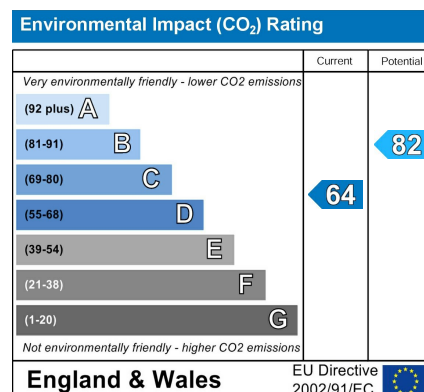
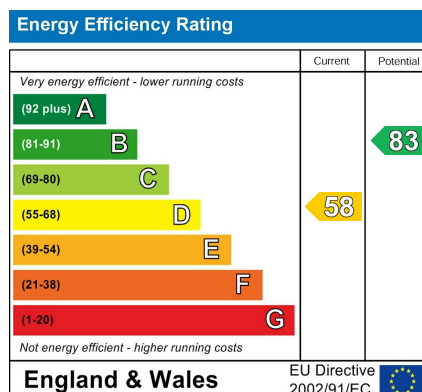
**Frindsbury Hill, Strood, Rochester**

**3 Bedroom, 1 Bathroom, House - Semi-Detached - £400,000**

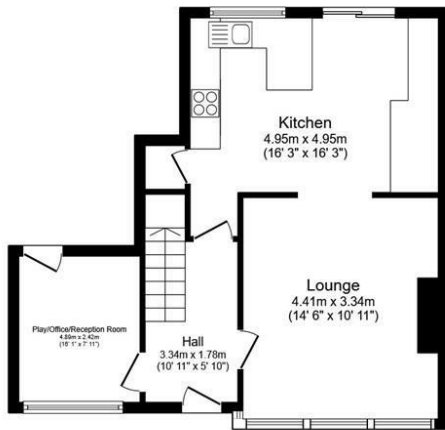




- Offered with no forward chain
- Refurbished to a high standard
- Modern Interior
- Open plan kitchen diner
- Large front garden with Lawn
- Additional Room/playroom/gym/office
- Close to Motorway
- Parking for 3 vehicles
- 2 Large Reception Rooms
- Perfect family home

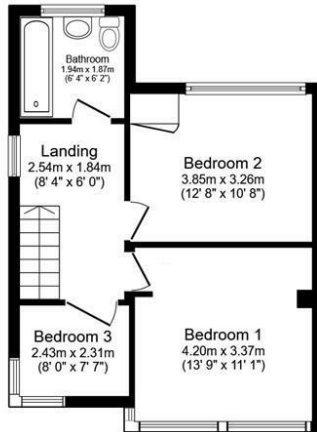






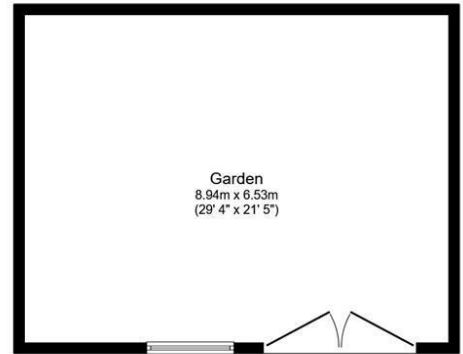
## Ground Floor

Floor area 51.1 m<sup>2</sup> (550 sq.ft.)



## First Floor

Floor area 40.3 m<sup>2</sup> (434 sq.ft.)



## Garden

Floor area 55.4 m<sup>2</sup> (596 sq.ft.)

**TOTAL: 146.8 m<sup>2</sup> (1,580 sq.ft.)**

This floor plan is for illustrative purposes only. It is not drawn to scale. Any measurements, floor areas (including any total floor area), openings and orientations are approximate. No details are guaranteed, they cannot be relied upon for any purpose and do not form any part of any agreement. No liability is taken for any error, omission or misstatement. A party must rely upon its own inspection(s). Powered by [www.Propertybox.io](http://www.Propertybox.io)

<http://www.martinco.com>

**Martin & Co Medway Sales**  
161 High Street, Rochester, Kent, ME1 1EH



**Accuracy:** References to the Tenure of a Property are based on information supplied by the Seller. The Agent has not had sight of the title documents. A Buyer is advised to obtain verification from their Solicitor. Items shown in photographs including but not limited to carpets, fixtures and fittings are not included unless specifically mentioned within the sales particulars. They may however be available by separate negotiation. Buyers must check the availability of any property and make an appointment to view before embarking on any journey to see a property. No person in the employment of the agent has any authority to make any representation about the property, and accordingly any information given is entirely without responsibility on the part of the agents, sellers(s) or lessors(s). Any property particulars are not an offer or contract, nor form part of one. **Sonic / Laser Tape:** Measurements taken using a sonic / laser tape measure may be subject to a small margin of error. **All Measurements:** All Measurements are Approximate. **Services Not tested:** The Agent has not tested any apparatus, equipment, fixtures and fittings or services and so cannot verify that they are in working order or ?t for the purpose. A Buyer is advised to obtain verification from their Solicitor or Surveyor.