

FOR SALE



Shell Drake Close, Isle Of Grain
Guide Price £250,000


MARTIN & CO

Shelldrake Close, Isle Of Grain

Guide Price £250,000

- 3 Bedrooms
- Cu-De-Sac location
- Garage to rear.
- Investment
- Let on AST

Investment property - A well presented 3 bedroom mid terraces house on the Isle of Grain. Situated in a Cul-De-Sac settings free from passing traffic. 3 Bedrooms with GF bathroom, fitted kitchen, front and rear gardens and garage to the rear. Sold with tenant in situ on an AST paying £1000 pcm. Call...



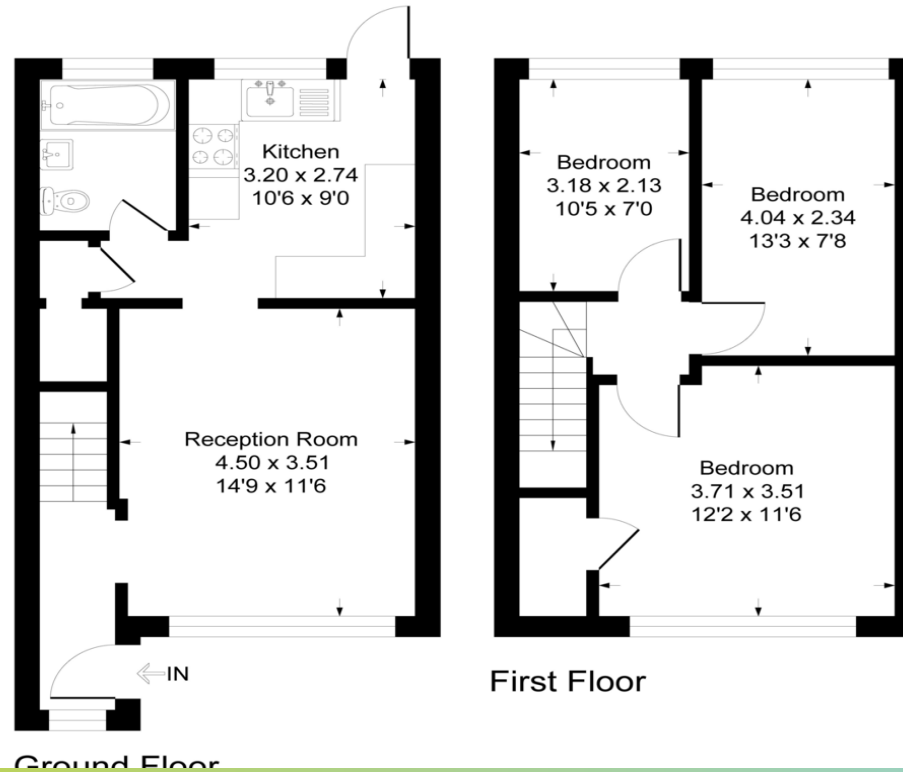


%epcGraph_c_1_322%



Sheldrake Close ME3

Approximate Gross Internal Floor Area = 72.6 sq m / 782 sq ft



Martin & Co Medway

161 High Street • • Rochester • ME1 1EH

T: • E:

Illustration for identification purposes only, measurements are approximate, not to scale.

<http://www.martinco.com>

Accuracy: References to the Tenure of a Property are based on information supplied by the Seller. The Agent has not had sight of the title documents. A Buyer is advised to obtain verification from their Solicitor. Items shown in photographs including but not limited to carpets, fixtures and fittings are not included unless specifically mentioned within the sales particulars. They may however be available by separate negotiation. Buyers must check the availability of any property and make an appointment to view before embarking on any journey to see a property. No person in the employment of the agent has any authority to make any representation about the property, and accordingly any information given is entirely without responsibility on the part of the agents, sellers(s) or lessors(s). Any property particulars are not an offer or contract, nor form part of one. **Sonic / Laser Tape:** Measurements taken using a sonic / laser tape measure may be subject to a small margin of error. **All Measurements:** All Measurements are Approximate. **Services Not tested:** The Agent has not tested any apparatus, equipment, fixtures and fittings or services and so cannot verify that they are in working order or fit for the purpose. A Buyer is advised to obtain verification from their Solicitor or Surveyor.


MARTIN&CO