

www.churchandhawes.com
156 Station Road, Burnham on Crouch,
Essex, CM0 8HJ
Tel: 01621 782652
burnham@churchandhawes.com

Church & Hawes

Est.1977

Estate Agents, Valuers, Letting & Management Agents

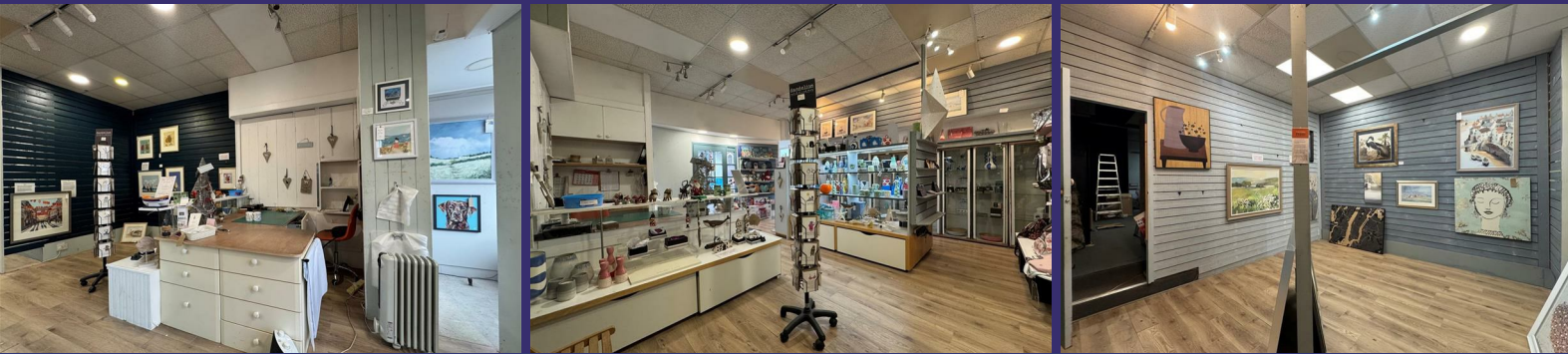


54 High Street, Burnham-On-Crouch, CM0 8AA

£850 PCM

This prominent ground floor retail unit is situated in a high footfall location, benefiting from excellent street presence and visibility. The property features a large glazed frontage, providing strong natural light and an ideal opportunity for eye-catching displays. Internally, the unit offers an open-plan layout, allowing for flexible configuration to suit a variety of retail,

showroom, café, or service uses (subject to the necessary consents). Easy street-level access enhances customer convenience, while the surrounding area is well served by public transport links and nearby amenities, making this an attractive and accessible commercial opportunity. EPC.



COVERING MID ESSEX TO THE EAST COAST SINCE 1977



Lettings Information For Tenants BOC

You will be required to complete a PRE-LET APPLICATION and once this has been supplied we shall be pleased to arrange viewings of the properties which are of interest to you, usually by agreement with the owner or present tenant. Where properties are currently vacant, accompanied viewings can be arranged, usually during normal business hours. Properties are currently offered for letting on an AST for 6 or 12 months. This will change in the coming months due to the "Renters Rights Act"

A Homelet reference will be undertaken, this will include details of your bank, employment, (accountant, if you are self employed) personal referees and any previous landlords, they will also carry out a credit check. So as to satisfy the RIGHT TO RENT REGULATIONS, please supply your UK/EU PASSPORT, NON EU PASSPORT and RIGHT TO STAY VISA IF NON EU PASSPORT, DRIVING LICENCE and also a UTILITY BILL (not more than three months old) showing your current address.

Before the application can begin we will need the above along with the PRE LET QUESTIONNAIRE, REFERENCE FORMS, PET / DECORATING request forms, HOLDING DEPOSIT and the ACKNOWLEDGMENT FORM returned fully completed and signed, without these we are unable to proceed with your proposed rental. COMPANY LETS ARE CHARGED AT £250 PER REFERENCE and a £160 CHARGE FOR THE PREPARATION OF THE TENANCY AGREEMENT. Your application will then be processed by a Reference Agency, we usually receive approval within two or three working days but please allow at least seven.

Church & Hawes require a holding deposit of one weeks rent in order to proceed with the application, this can be converted into part payment of the actual 5 week security deposit or the initial rental payment once the references and tenancy agreement have been approved.

If the tenancy does not proceed due to no fault of your own (IE landlord deciding not to rent the property), the holding deposit will be returned. If the tenancy does not proceed due to your own circumstances including reference refusal, then the holding deposit will not be returnable.

One weeks holding deposit is the rent multiplied by 12 months and then divided by 52. For example (Rent of £1,000 pcm x 12 = £12,000 divided by 52 = £230.77 holding deposit. A deposit, equal to 5 weeks of the total rent for the property, which is held during the tenancy as security for the rent and property condition by Church and Hawes as

commitment to you is of paramount importance and to ensure this and to give you peace of mind, we are members of the National Association of Estate Agents (NAEA) The Property Ombudsman (TPOS), National Approved Lettings Scheme (NALS), Tenancy Dispute Scheme (TDS), Property Mark Client Money Protection Scheme.

Village of Burnham-on-Crouch

Burnham-on-Crouch is a picturesque town on the banks of the River Crouch, a renown yachting and sailing centre hosting the famous 'Burnham Week' at the end of August. The town has a population of a little over 9,500 and is the principal settlement in the Dengie peninsula. Consequently it boasts many amenities that are uncommon in small towns including two primary schools and an academy secondary school, independent cinema, Burnham yacht harbour/marina, several boatyards, three yacht clubs (including the Royal Corinthian & Royal Burnham), two supermarkets and numerous individual shops, public houses and restaurants. There is a railway station on the Southminster branch line with direct commuter trains into London Liverpool Street (at peak times). The Burnham-on-Crouch Golf Club, founded in 1923, is situated in Creeksea on the outskirts of Burnham and enjoys breathtaking views over the Crouch Valley and River Crouch.

Agents Notes

These particulars do not constitute any part of an offer or contract. All measurements are approximate. No responsibility is accepted as to the accuracy of these particulars or statements made by our staff concerning the above property. We have not tested any apparatus or equipment therefore cannot verify that they are in good working order. Any intending purchaser must satisfy themselves as to the correctness of such statements within these particulars. All negotiations to be conducted through Church and Hawes. No enquiries have been made with the local authorities pertaining to planning permission or building regulations. Any buyer should seek verification from their legal representative or surveyor.



stakeholder for security breaches of the tenancy agreement, therein, Church and Hawes are members of the tenancy deposit scheme. N.B. Both the deposit together with the first month's rent, in advance are payable upon signing the Tenancy Agreement and must be cleared funds made by Electronic transfer (please ask for our bank details). You cannot collect the keys until monies are received. CASH IS NOT ACCEPTABLE.



Reference Checks are not carried out within the office. Please complete the relative forms and return them to this office. Our Lettings Management office can be contacted at 4 High Street, Maldon, C M 9 5 P J . 01621 878417 o r lettings@churchandhawes.com. At Church & Hawes, our

COVERING MID ESSEX TO THE EAST COAST SINCE 1977