



Brackley Way, Berg Estate, Basingstoke, RG22 6LL

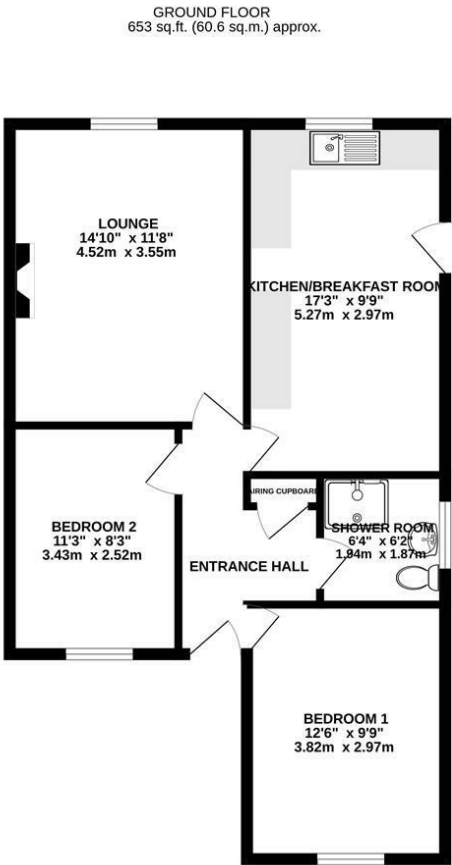
£390,000 - Freehold



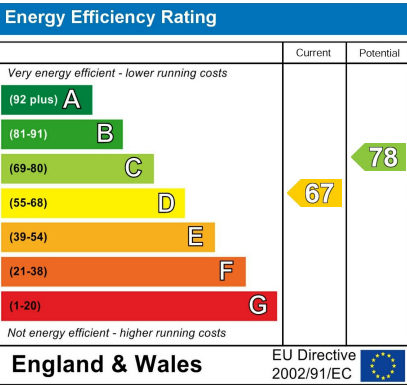
Barons Estate Agents are pleased to bring to the market this attractive bungalow that has been well maintained and updated by the present owner. The accommodation comprises of an entrance hall, 2 bedrooms, lounge, refitted shower room and updated kitchen. To the front there is a garden laid to lawn, drive way parking, double wooden gates leading to further parking and detached garage. The rear garden is enclosed and enjoys a patio, lawned area and shrub beds. No Onward Chain.

Key Points and Features

- No Onward Chain
- Refitted Shower Room
- Double Glazed
- Entrance Hall
- Updated Kitchen
- Garden
- 2 Bedrooms
- Lounge
- Garage



TOTAL FLOOR AREA: 653 sq.ft. (60.6 sq.m.) approx.
Measurements are approximate. Not to scale. Illustrative purposes only.
Made with Metropix ©2025



Location

Brackley Way is located on the Berg Estate and is located in an established location, benefiting from local shops which include a convenience store, hairdressers and a take-away. There is also a bus service that runs down Buckland Avenue and local schools are situated close-by in Western Way. Down Grange and Brighton Hill Retail Park and an array of restaurants are also situated within half a mile of the property.

Tenure

Freehold

Local Authority

Basingstoke & Deane Borough Council.

Council Tax Band

Band C

Viewing Arrangements

Strictly by appointment only via Barons Estate Agents

Extra Services

Barons Estate Agents will recommend the services of other businesses and may receive a referral fee in some instances where a buyer or seller uses the services of that company.