



Pennine Way, Buckskin, Basingstoke, RG22 5AF

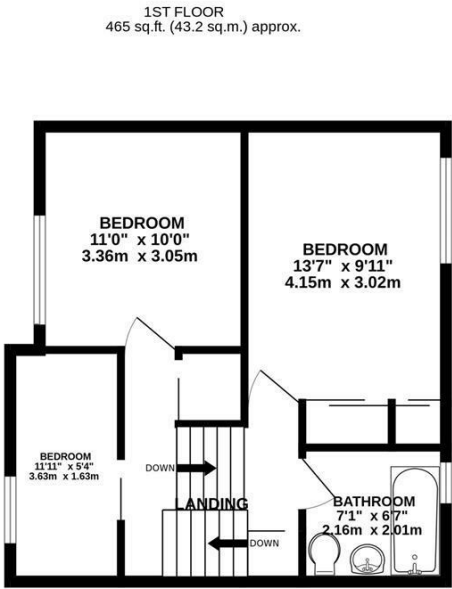
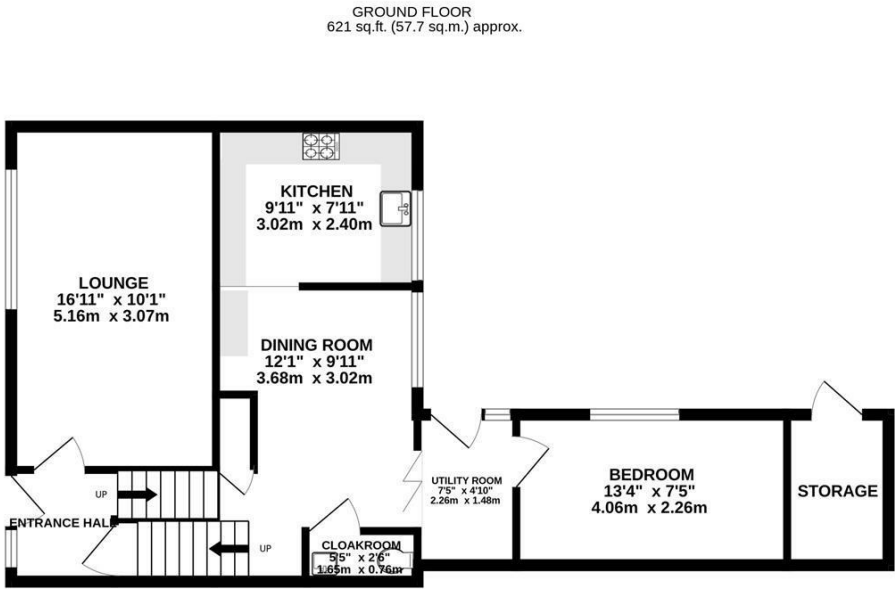
£300,000 Guide price - Freehold



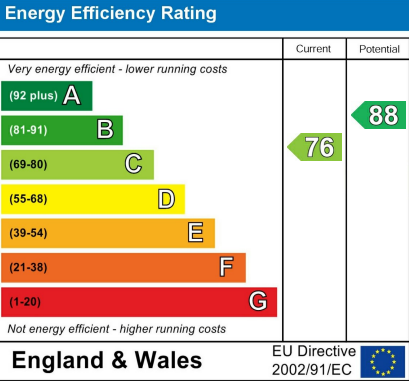
Barons Estate Agents are delighted to present this four bedroom, split level, mid terrace property located in Buckskin. The property is positioned in a quiet residential area, and is presented to the market in immaculate condition in our opinion. Internally, the property features an entrance hallway, lounge, dining room, kitchen, utility, cloakroom, four bedrooms, a bathroom and ample storage cupboards. Externally, there are both front and rear enclosed gardens. Additional benefits include gas central heating, solar panels which are owned outright and double glazing throughout. An early viewing of this ideal family home would be strongly recommended by the vendor's sole agent.

Key Points and Features

- Mid Terrace Family Home
- Four Bedrooms
- Bathroom
- Lounge & Dining Room
- Kitchen
- Cloakroom & Utility
- NO ONWARD CHAIN
- Gas Heating & Double Glazed
- Solar Panels Owned Outright



TOTAL FLOOR AREA : 1086 sq.ft. (100.9 sq.m.) approx.
Measurements are approximate. Not to scale. Illustrative purposes only
Made with Metropix ©2025



Location

Pennine Way benefits from local shops, Stratton Park and is in close proximity to bus routes, and Basingstoke Leisure Complex. This includes a 10 screen cinema, swimming pool, ice rink, bowling, restaurant and Milestones Museum. Basingstoke Town Centre offers Festival Place shopping centre, a mainline train line to London Waterloo and a vast selection of bars, restaurants and eateries.

Local Authority

Basingstoke & Deane Borough Council.

Tenure

Freehold.

Council Tax

Band C.

Viewing Arrangements

Strictly by appointment with Barons Estate Agents.

Extra Services

Barons Estate Agents will recommend the services of other businesses and may receive a referral fee in some instances where a buyer or seller uses the services of that company.