



Skyline Plaza, Alencon Link, Basingstoke, RG21 7AX

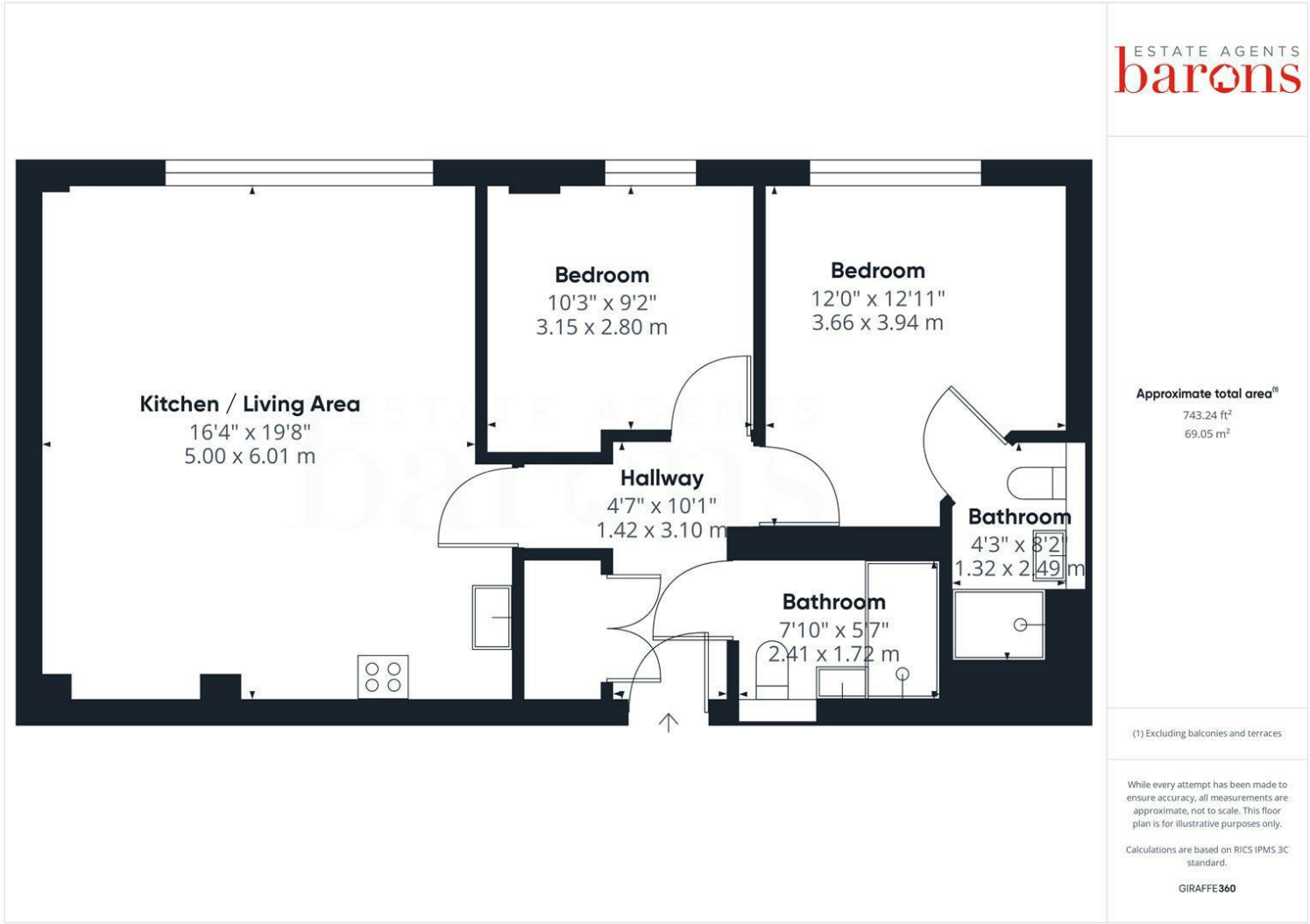
£230,000 - Leasehold



Barons Estate Agents are delighted to present this 5th floor, two bedroom apartment, situated within close proximity to Basingstoke town centre and train station. The property has been lovingly cared for by the current vendor and is presented to the market in immaculate condition in our opinion. Internally, the apartment features an entrance hallway, a spacious open plan kitchen/living room, two double bedrooms, en suite and a modern family bathroom. The block itself features a secure entry system and a lift. Additional benefits include heating, double glazing throughout and an underground parking space. An early viewing would be strongly advised by the vendor's sole agent.

Key Points and Features

- Town Centre
- Open Plan Kitchen/Living Room
- Sought After Location
- 5th Floor
- Modern En Suite & Shower Room
- Two Double Bedrooms
- Allocated Parking



Energy Efficiency Rating		
	Current	Potential
Very energy efficient - lower running costs		
(92 plus) A		
(81-91) B		
(69-80) C		
(55-68) D		
(39-54) E		
(21-38) F		
(1-20) G		
Not energy efficient - higher running costs		
England & Wales	EU Directive 2002/91/EC	

Location

Skyline Plaza is a desired Basingstoke town centre location, offering easy access to the mainline train station and all of Basingstoke facilities and amenities which include Festival place shopping centre and a wealth of restaurants and bars. Local schooling and colleges are within close reach together with access to the M3.

Tenure

Leasehold - 131 Years remaining approx.
Service Charge - £223.59 PCM approx.
Ground Rent - £16.67 PCM approx.

Local Authority

Basingstoke & Deane Borough Council.

Council Tax

Band C.

Viewing Arrangements

Viewings are to be arranged via Barons Estate Agents.

Extra Services

Barons Estate Agents will recommend the services of other businesses and may receive a referral fee in some instances where a buyer or seller uses the services of that company.