



Wykeham Drive, Worting, Basingstoke, RG23 8HW

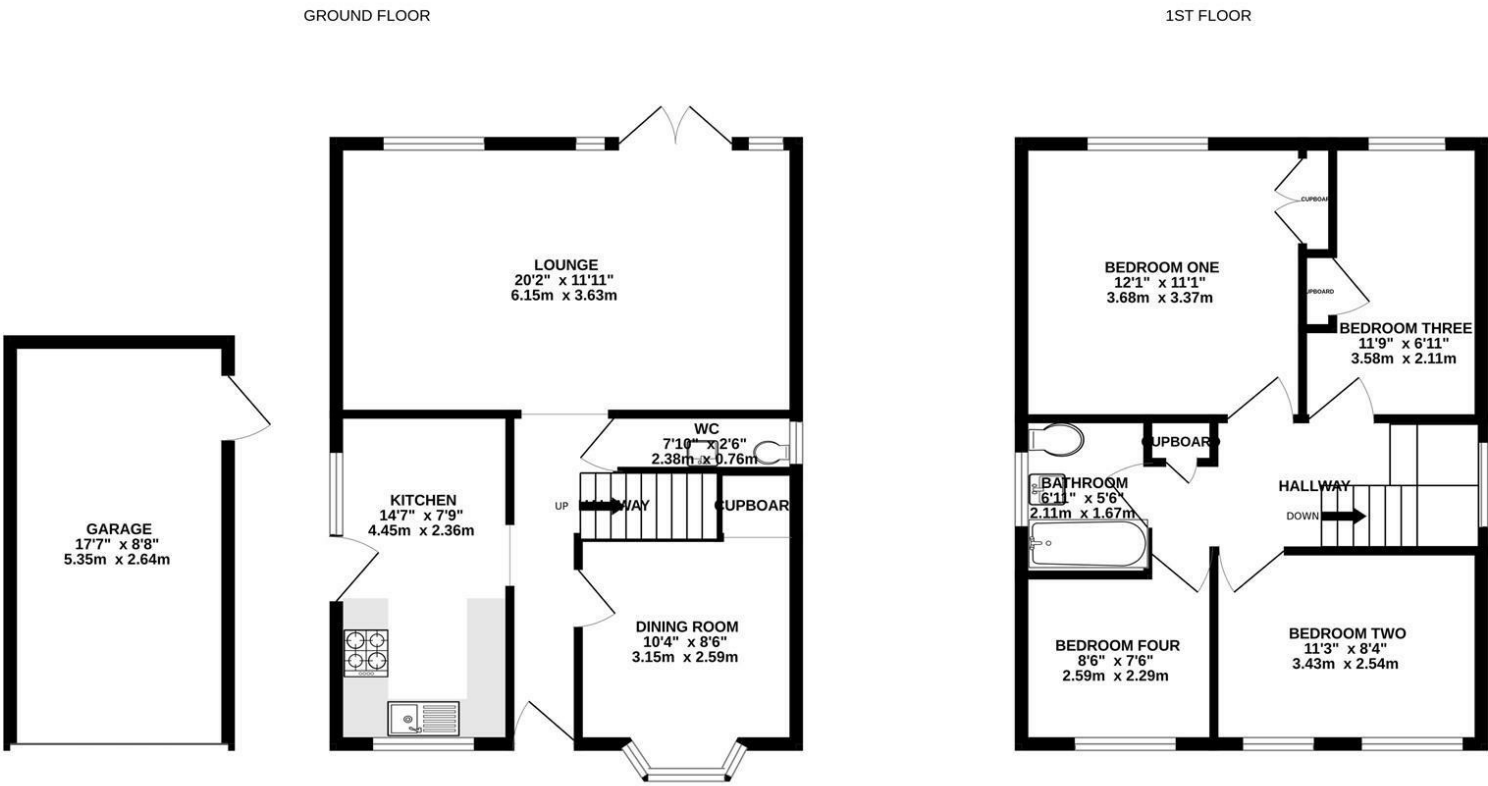
£500,000 - Freehold



Barons Estate Agents are delighted to present this spacious four bedroom detached property, situated in the desirable location of Worting. Internally on the ground floor, the property features an entrance hallway, kitchen, dining room, cloakroom and a lounge. Upstairs there are four bedrooms and a modern family bathroom. Externally, the property boasts driveway parking, a garage, and an enclosed rear garden with a summer house. Additional benefits include heating, double glazing throughout and NO ONWARD CHAIN. An early viewing would be strongly advised.

Key Points and Features

- Detached Family Home
 - Kitchen
 - Enclosed Rear Garden
- Four Bedrooms
 - Lounge
 - Garage & Driveway Parking
- Modern Family Bathroom & Cloakroom
 - Dining Room
 - NO ONWARD CHAIN



Measurements are approximate. Not to scale. Illustrative purposes only
Made with Metropix ©2025



Energy Efficiency Rating		Current	Potential
Very energy efficient - lower running costs			
(92 plus) A			84
(81-91) B			
(69-80) C		72	
(55-68) D			
(39-54) E			
(21-38) F			
(1-20) G			
Not energy efficient - higher running costs			
England & Wales		EU Directive 2002/91/EC	

Location

Wykeham Drive is situated on the western side of Basingstoke, situated within 1 mile of Basingstoke Leisure Park and Weybrook Park Golf Club. With accessibility to the ring road via Roman Road, giving access to Newbury, Reading and of course Basingstoke to name a few. Basingstoke itself benefits from Festival Place shopping Centre, retail parks and mainline railway station giving access to London Waterloo in 45 minutes.

Tenure

Freehold

Local Authority

Basingstoke & Deane Borough Council

Council Tax

Band E

Viewing Arrangements

Viewings of this property are strictly via Barons Estate Agents.

Extra Services

Barons Estate Agents will recommend the services of other businesses and may receive a referral fee in some instances where a buyer or seller uses the services of that company.