



Bach Close, Brighton Hill, Basingstoke, RG22 4JZ

£345,000 - Freehold



Barons Estate Agents are pleased to bring to the market this family home presented, in our opinion, to a very high standard. The accommodation to the first floor comprises of three bedrooms and re fitted bathroom. The ground floor enjoys an entrance hall, lounge, Re fitted kitchen dining room, outer lobby and cloakroom. To the front of the property there is a gravelled garden and path leading to the front door. The rear garden enjoys an artificial lawn and seating area with steps up to a raised area with further seating, shed and rear access. There is a garage in block to the rear with parking for a car to the front.

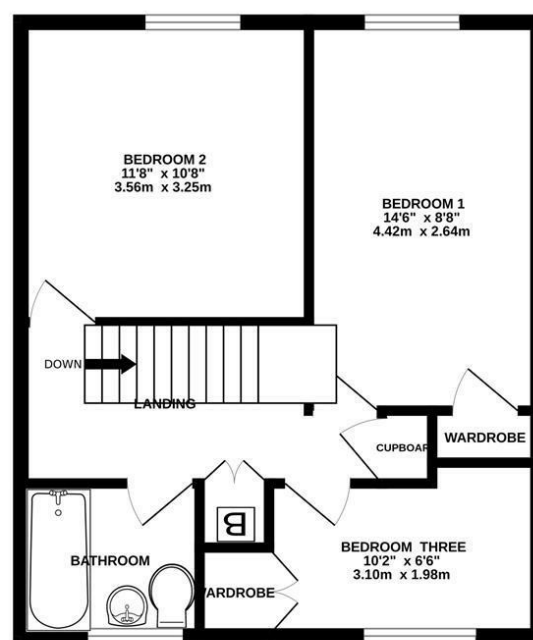
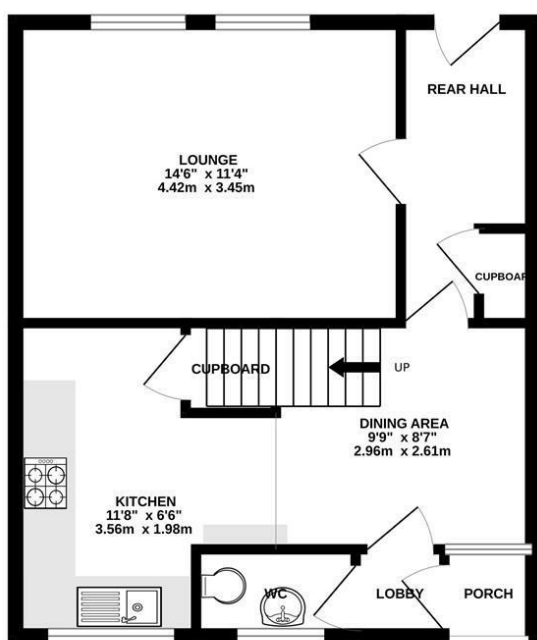
Key Points and Features

- 3 Bedrooms
- Re Fitted Bathroom
- Re fitted Kitchen/Dining Room
- Cloakroom
- Lounge
- Entrance Hall
- Double Glazed
- Garden
- Garage



GROUND FLOOR

1ST FLOOR



Measurements are approximate. Not to scale. Illustrative purposes only. Made with Metropix ©2024



Energy Efficiency Rating		Current	Potential
Very energy efficient - lower running costs			
(92 plus) A			87
(81-91) B		71	
(69-80) C			
(55-68) D			
(39-54) E			
(21-38) F			
(1-20) G			
Not energy efficient - higher running costs			
England & Wales		EU Directive 2002/91/EC	

Location

Bach Close is situated to the south/west of the town centre and gives access to junction 6 and 7 of the M3. The mainline railway is within a short drive with a direct link to London Waterloo in 45 minutes. Local shops and retail shopping parks are close to hand along with more extensive shopping in the acclaimed Festival Place with its diverse mix of shops and restaurants. The Anvil and Haymarket Theatres along with the multi screen cinema offer further entertainment.

Tenure

Freehold

Local Authority

Basingstoke & Deane Borough Council

Council Tax Band

Band C

Viewing Arrangements

Viewings are to be arranged via Barons Estate Agents.

Extra Services

Viewings are to be arranged via Barons Estate Agents.