



Vine Tree Close, Pound Green, Tadley, RG26 3SS

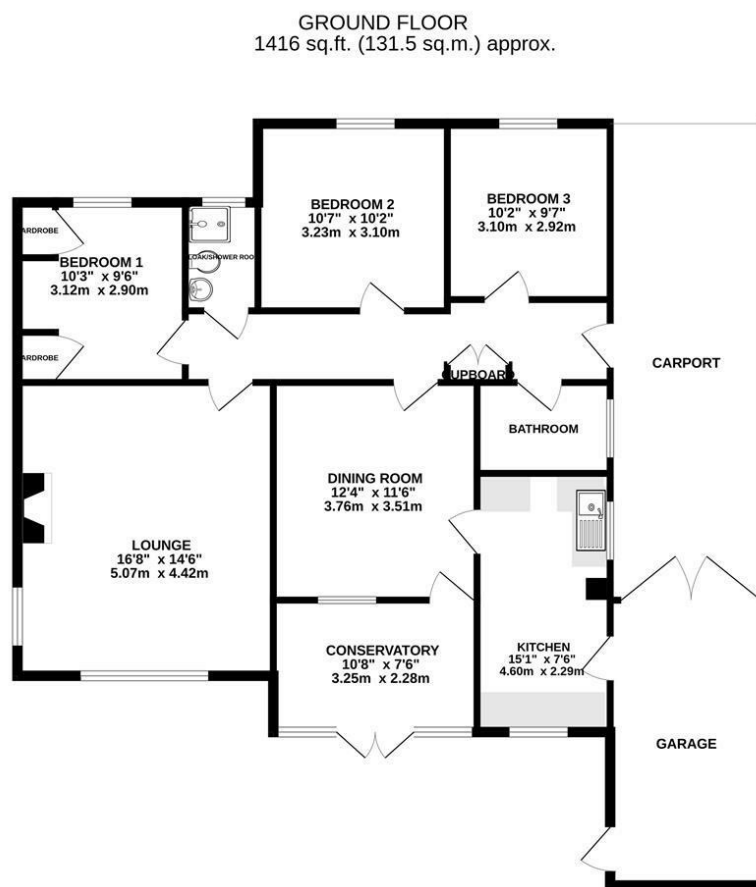
£400,000 - Freehold



Barons Estate Agents are pleased to offer this link detached bungalow in need of modernization and offered with No Onward Chain. The accommodation enjoys an entrance hall, 3 bedrooms, cloak/shower room, lounge, dining room, conservatory, kitchen and family bathroom. To the front of the property there is a good size front garden laid to lawn with dwarf hedging boarders, driveway parking and carport leading to garage with hinged doors. The rear garden is enclosed mainly laid to lawn.

Key Points and Features

- Entrance Hall
- Bathroom
- Conservatory
- 3 Bedrooms
- Lounge
- Kitchen
- Cloak/Shower Room
- Dining Room
- Garage



TOTAL FLOOR AREA: 1416 sq.ft. (131.5 sq.m.) approx.
Measurements are approximate. Not to scale. Illustrative purposes only.
Made with Metropix ©2024



| Energy Efficiency Rating | | |
|---|-------------------------|-----------|
| | Current | Potential |
| Very energy efficient - lower running costs | | |
| (92 plus) A | | |
| (81-91) B | | |
| (69-80) C | | |
| (55-68) D | | |
| (39-54) E | | |
| (21-38) F | | |
| (1-20) G | | |
| Not energy efficient - higher running costs | | |
| England & Wales | EU Directive 2002/91/EC | |

Location

Vine Tree Close is situated in an established location in a desirable area to the north of Basingstoke and south of Tadley. There is an abundance of country walks, a local pub and a shop close by with more extensive shopping within 2 miles in the nearby village of Tadley with its traditional parade of shops and super markets. Basingstoke is a short drive away, including the acclaimed 'Festival Place' shopping centre, cinemas, retail parks, theatres, M3 access and mainline railway to London Waterloo in 45 minutes. Viewing is recommended. No Onward Chain.

Tenure

Freehold

Local Authority

Basingstoke and Deane Borough Council.

Council Tax

Tax Band D

Viewing Arrangements

Strictly by appointment with Barons Estate Agents.

Extra Services

Barons Estate Agents will recommend the services of other businesses and may receive a referral fee in some instances where a buyer or seller uses the services of that company.