



Kennel Terrace

Brixworth, Northamptonshire

oriordanbond
SALES & LETTINGS



Kennel Terrace

Brixworth
NN6 9DL

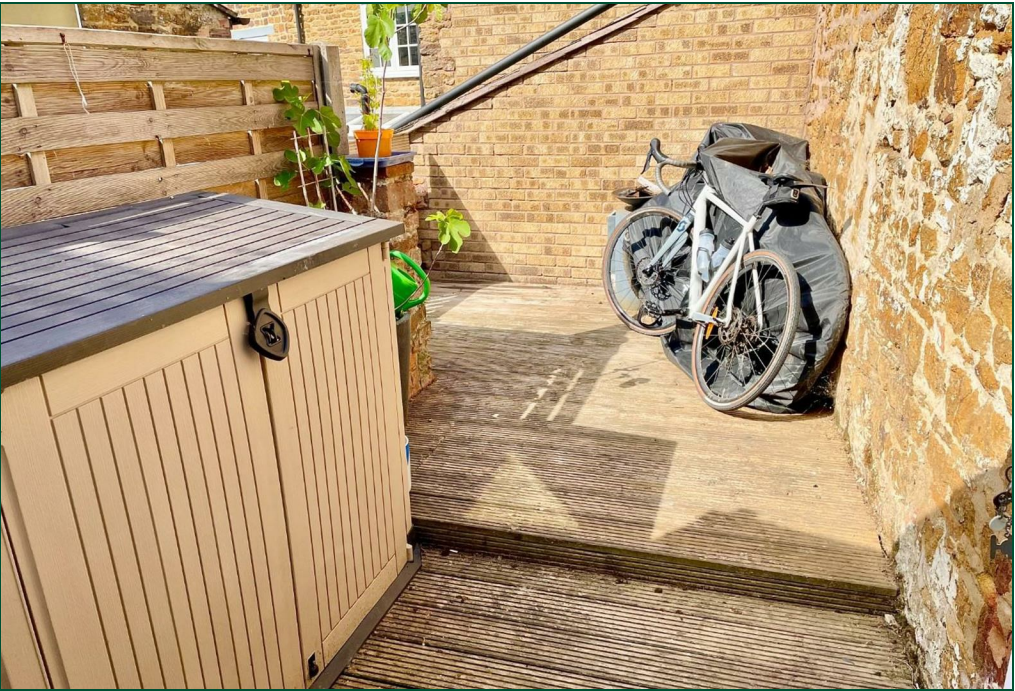
Price
£280,000

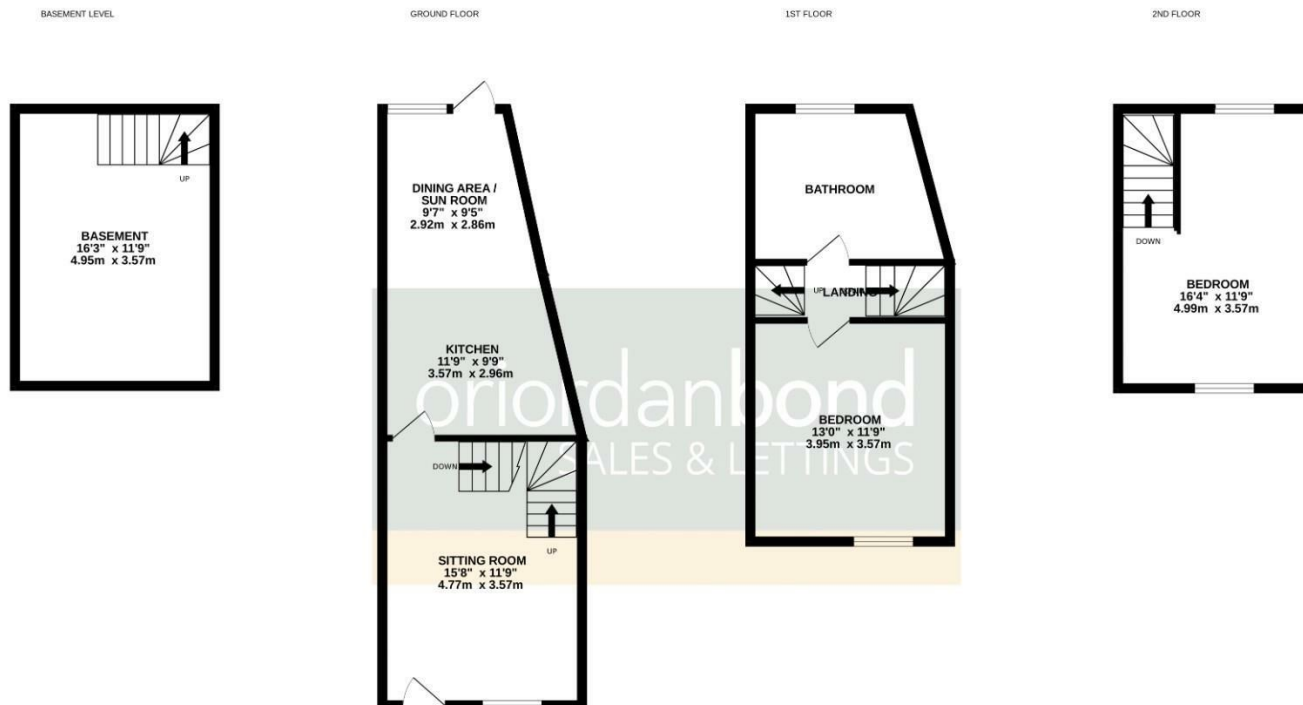
This charming 19th century ironstone cottage is deceptive in size, constructed over four floors, measuring in excess of 1,000 sq ft. Character features include exposed stone and red brick walls, drop latch doors, cast iron fire places, exposed timber A-frames and exposed timber flooring. The property also benefits from 21st century luxuries to include gas radiator heating with a recently installed combination gas boiler, under floor heating to the modern kitchen/dining/sun room and a four-piece bathroom.

Accommodation comprises sitting room, kitchen/dining/sun room with integrated washing machine, oven and microwave, basement (currently used as a third bedroom), first floor landing, a double bedroom and spacious modern four-piece bathroom. A further double bedroom occupies the second floor benefitting dual aspect. Outside, the cottage is situated off a side street, set back from the road, with an open outlook to the front elevation. There is a small walled front garden and pedestrian access to the fully enclosed rear courtyard garden. The cottage is situated in the heart of the thriving village of Brixworth Village which has an abundance of amenities. (B/1044/S)

- 19th century four storey ironstone cottage
- Two double bedrooms
- Kitchen/dining/sun room
- Gas radiator heating
- Character features
- Enclosed rear courtyard garden







TOTAL FLOOR AREA : 1034 sq.ft. (96.1 sq.m.) approx.

Whilst every attempt has been made to ensure the accuracy of the floorplan contained here, measurements of doors, windows, rooms and any other items are approximate and no responsibility is taken for any error, omission or mis-statement. This plan is for illustrative purposes only and should be used as such by any prospective purchaser. The services, systems and appliances shown have not been tested and no guarantee as to their operability or efficiency can be given.
Made with Metropix ©2025



Additional information

- Council Tax Band: C
- Energy Efficiency Rating: C

Viewing

Viewing strictly by appointment – details below

Disclaimer

O'Riordan Bond Estate Agents Limited has not tested apparatus, equipment, fittings or services and so cannot verify they are in working order. The buyer is advised to obtain verification from their solicitor or surveyor.

O'Riordan Bond Brixworth Sales

01604 880077

brixworth@oriordanbond.co.uk

