



Skippons Court

Naseby, Northamptonshire

oriordanbond
SALES & LETTINGS



Skippons Court

Naseby
NN6 6DT

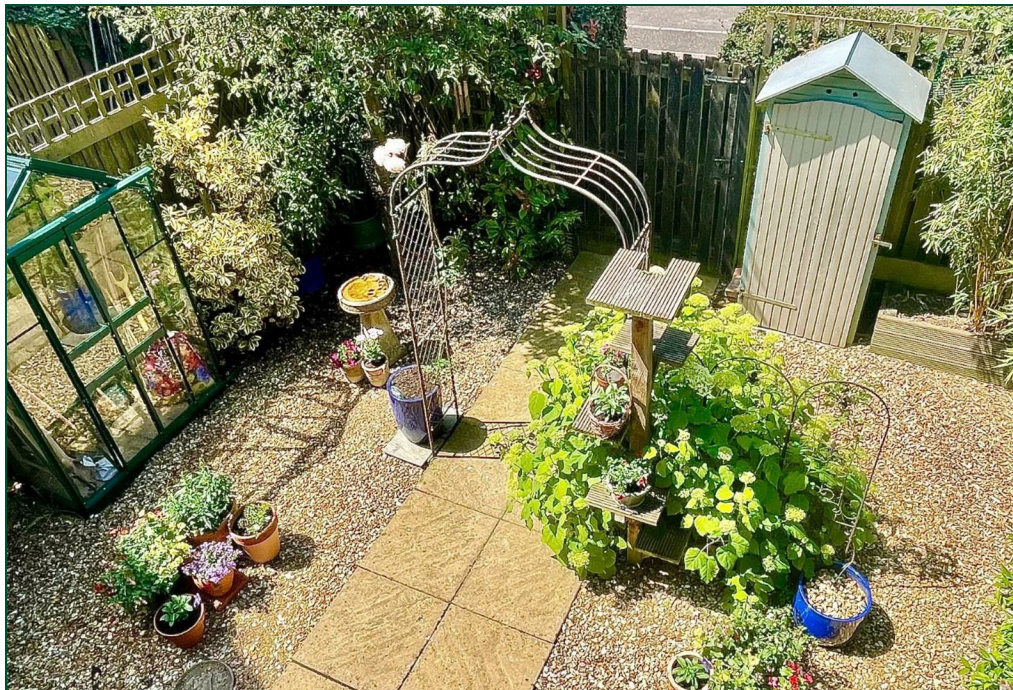
Price
£300,000

A pretty three bedroom cottage, constructed by Messrs Francis Jackson Homes in 2006 on a westerly facing plot, set back off the High Street, in the highly regarded village of Naseby. The cottage is deceptive in size measuring approximately 980 ft² and has electric to radiator heating, built-in wardrobes to all bedrooms and offered with no onward chain.

Accommodation comprises entrance hall, spacious cloakroom/WC, stairs to the first floor landing with built-in storage cupboard under and doors to the sitting room and kitchen/diner. The sitting room has dual aspect and double doors to the rear garden and a chimney giving the option of having an open fireplace or wood burner if desired. The kitchen/dining room is fairly square measuring 12'10 x 10'2 with dual aspect and integrated double oven/grill, electric hob and fridge/freezer with space for two further white goods and a window and door to the rear garden. To the first floor is a master bedroom with en-suite, double bedroom with a view towards the village allotment gardens, single bedroom and a five-piece family bathroom. Outside to the front, the terrace of three cottages are enclosed via hedgerow offering a high degree of privacy and approached via a pretty rose archway. To the rear is a delightful low maintenance private cottage garden with rear pedestrian access to the double width parking beyond. (A/980/S)

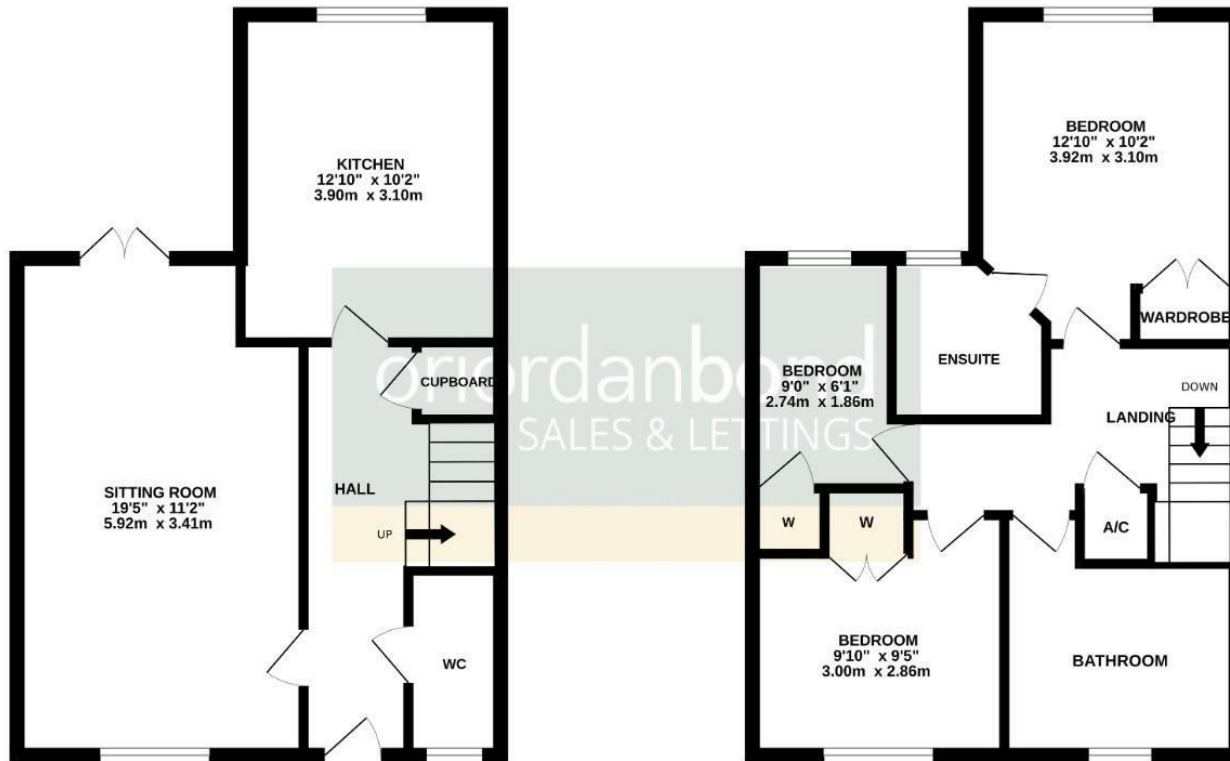
- Three bedroom cottage
- En-suite to master bedroom
- Kitchen/dining room with integrated appliances
- Low maintenance rear cottage garden
- Off road parking
- No onward chain





GROUND FLOOR

1ST FLOOR



TOTAL FLOOR AREA : 980sq.ft. (91.0 sq.m.) approx.

Whilst every attempt has been made to ensure the accuracy of the floorplan contained here, measurements of doors, windows, rooms and any other items are approximate and no responsibility is taken for any error, omission or mis-statement. This plan is for illustrative purposes only and should be used as such by any prospective purchaser. The services, systems and appliances shown have not been tested and no guarantee as to their operability or efficiency can be given.

Made with Metropix ©2024



Additional information

- Council Tax Band: C
- Energy Efficiency Rating: D

Viewing

Viewing strictly by appointment – details below

Disclaimer

O'Riordan Bond Estate Agents Limited has not tested apparatus, equipment, fittings or services and so cannot verify they are in working order. The buyer is advised to obtain verification from their solicitor or surveyor.

O'Riordan Bond Brixworth Sales

01604 880077

brixworth@oriordanbond.co.uk

