

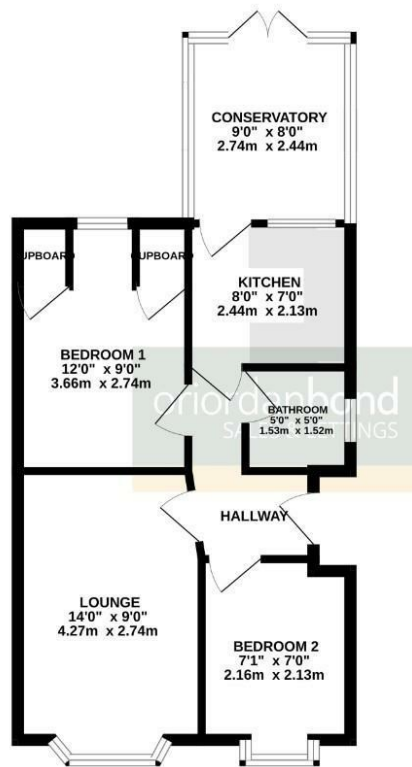


Norton Road
Kingsthorpe, Northampton

oriordanbond
SALES & LETTINGS



GROUND FLOOR
473 sq.ft. (43.9 sq.m.) approx.



TOTAL FLOOR AREA: 473 sq.ft. (43.9 sq.m.) approx.

Whilst every attempt has been made to ensure the accuracy of the floorplan contained here, measurements of doors, windows, rooms and any other items are approximate and no responsibility is taken for any error, omission or misstatement. This plan is for illustrative purposes only and should be used as such by any prospective purchaser. The services, systems and appliances shown have not been tested and no guarantee as to their operability or efficiency can be given.
Made with NetScout C5025

Norton Road

Kingsthorpe

NN2 7TL

OFFERS OVER £170,000

A mature two bedroom semi-detached bungalow, offered to the market with no onward chain, located in the centre of Kingsthorpe. The property is within walking distance to Kingsthorpe front with a choice of local shops, amenities and a public bus stop.

Accommodation comprises entrance hall, bay fronted sitting room, two good size bedrooms, a shower/wet room, separate kitchen and conservatory. Outside is an enclosed rear garden with side access. To the front of the property is a low maintenance garden. Further benefits include uPVC double glazing and gas radiator heating. (B/473/S)

Additional information

- Council Tax Band: A
- Energy Efficiency Rating: D

Viewing

Viewing strictly by appointment – details below

Disclaimer

O'Riordan Bond Estate Agents Limited has not tested apparatus, equipment, fittings or services and so cannot verify they are in working order. The buyer is advised to obtain verification from their solicitor or surveyor.

O'Riordan Bond Kingsthorpe Sales

01604 722007

kingsthorpe@oriordanbond.co.uk

