



Vicarage Lane

Kingsthorpe Village, Northampton

oriordanbond
SALES & LETTINGS



Vicarage Lane

Kingsthorpe Village
NN2 6QS

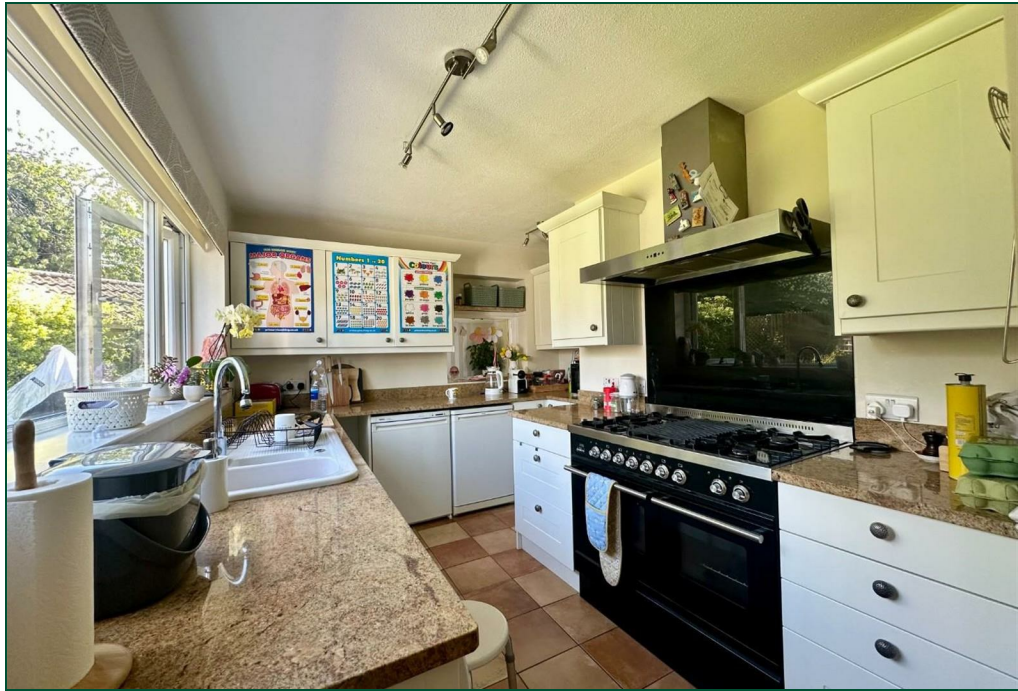
O.I.R.O
£495,000

Offered with no onward chain is this extended and well presented four bedroom character detached property, located within the heart of sought after Kingsthorpe village, offering over 1,650 sq. ft. of accommodation. There is a local primary school within walking distance, a village green and ample shopping facilities.

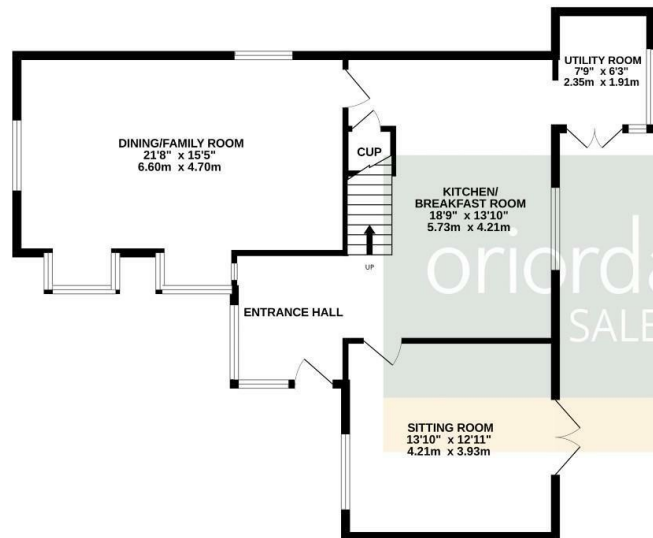
Accommodation comprises large tiled entrance hall, dual aspect living room with French doors leading to the garden, open plan kitchen/breakfast room with access to a conservatory/utility room and a dining/family room with feature wood burning stove and box bay windows. The first floor offers four great size bedrooms, with master bedroom benefitting from an en-suite shower room. There is also a three-piece family bathroom and airing cupboard. Outside is a private and enclosed rear garden with patio area leading to laid to lawn and covered seating area. To the front of the property is a driveway providing off road parking with feature wall boundary and gates. Further benefits include uPVC double glazing and gas radiator heating. (A/1667/M)

- Extended four bedroom detached home
- En-suite to master bedroom
- Two reception rooms
- Open plan kitchen/breakfast room
- Private enclosed rear garden
- Off road parking
- No onward chain

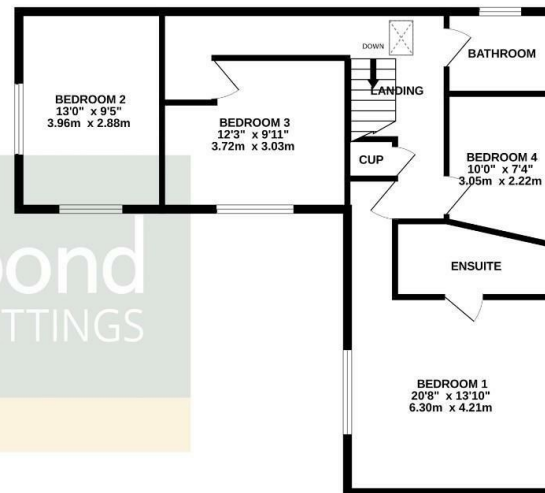




GROUND FLOOR



1ST FLOOR



TOTAL FLOOR AREA : 1667sq.ft. (154.9 sq.m.) approx.

Whilst every attempt has been made to ensure the accuracy of the floorplan contained here, measurements of doors, windows, rooms and any other items are approximate and no responsibility is taken for any error, omission or mis-statement. This plan is for illustrative purposes only and should be used as such by any prospective purchaser. The services, systems and appliances shown have not been tested and no guarantee as to their operability or efficiency can be given.
Made with Metropix ©2025



Additional information

- Council Tax Band: E
- Energy Efficiency Rating: C

Viewing

Viewing strictly by appointment – details below

Disclaimer

O'Riordan Bond Estate Agents Limited has not tested apparatus, equipment, fittings or services and so cannot verify they are in working order. The buyer is advised to obtain verification from their solicitor or surveyor.

O'Riordan Bond Kingsthorpe Sales
01604 722007

kingsthorpe@oriordanbond.co.uk

