



Harborough Road

Kingsthorpe, Northampton

oriordanbond
SALES & LETTINGS



Harborough Road

Kingsthorpe
NN2 8DJ

Price
£360,000

A charming four bedroom character semi-detached family home, set over three floors, offering over 1700 sq. ft. of versatile living accommodation. The property is located within the heart of Kingsthorpe and is just a short walk from local amenities, schools and a short drive to Northampton train station.

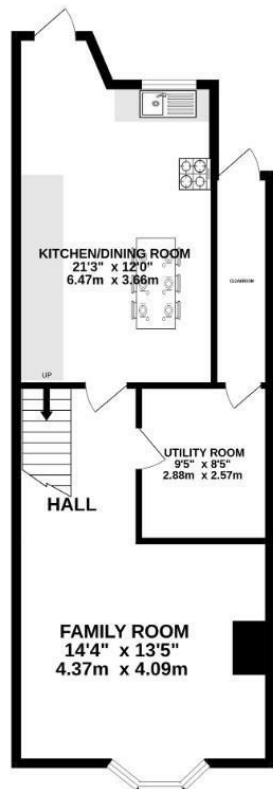
Accommodation comprises large entrance with bay fronted living room, home office, family shower room and a large double bedroom. The first floor offers two further double bedrooms and a large master bedroom all serviced by a three-piece family bathroom. To the lower floor is a large open plan kitchen/dining room with fitted appliances, utility room, boot room and a family room with log burning stove. Outside is a westerly facing rear garden with large patio area leading to laid to lawn and two garden sheds with power. To the front of the property is a low maintenance garden with shrub hedging. Further benefits include gas radiator heating and newly fitted uPVC double glazing. (A/1783/L)

- Charming three storey four bedroom semi-detached
- Separate reception rooms
- Large open plan kitchen/dining room
- Separate shower room and family bathroom
- Gas radiator heating
- Westerly facing rear garden

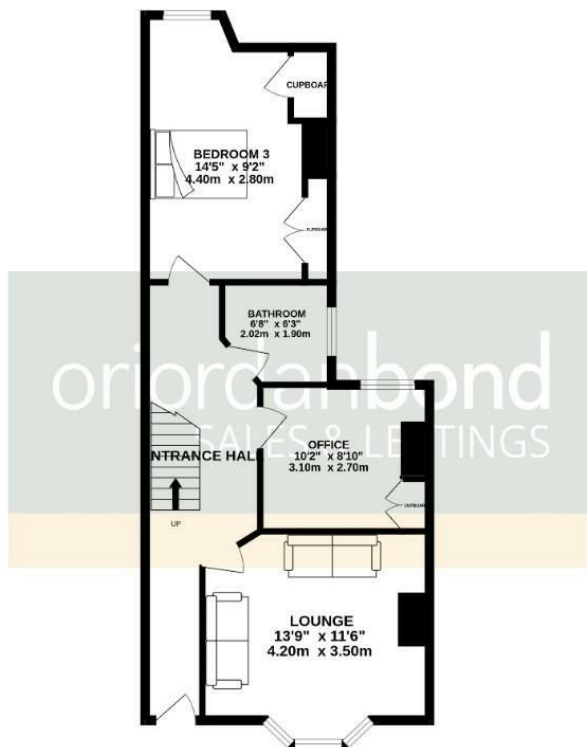




BASEMENT
630 sq.ft. (58.5 sq.m.) approx.



GROUND FLOOR
584 sq.ft. (54.3 sq.m.) approx.

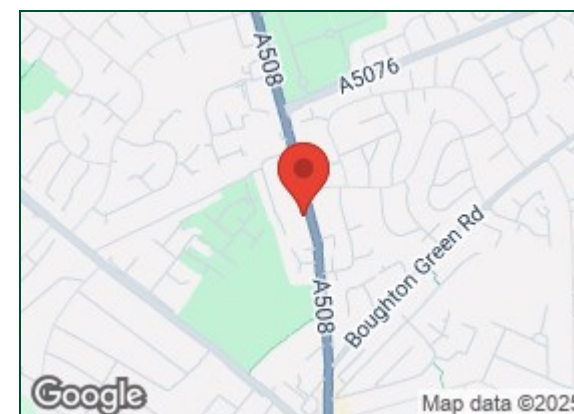


1ST FLOOR
568 sq.ft. (52.8 sq.m.) approx.



TOTAL FLOOR AREA : 1783 sq.ft. (165.6 sq.m.) approx.

Whilst every attempt has been made to ensure the accuracy of the floorplan contained here, measurements of doors, windows, rooms and any other items are approximate and no responsibility is taken for any error, omission or mis-statement. This plan is for illustrative purposes only and should be used as such by any prospective purchaser. The services, systems and appliances shown have not been tested and no guarantee as to their operability or efficiency can be given.
Made with Metropix ©2025



Additional information

- Council Tax Band: C
- Energy Efficiency Rating: D

Viewing

Viewing strictly by appointment – details below

Disclaimer

O'Riordan Bond Estate Agents Limited has not tested apparatus, equipment, fittings or services and so cannot verify they are in working order. The buyer is advised to obtain verification from their solicitor or surveyor.

O'Riordan Bond Kingsthorpe Sales
01604 722007

kingsthorpe@oriordanbond.co.uk

