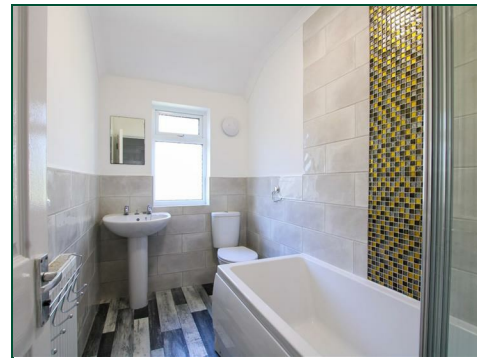




Freehold Street

Kingsthorpe Hollow, Northampton

oriordanbond
SALES & LETTINGS

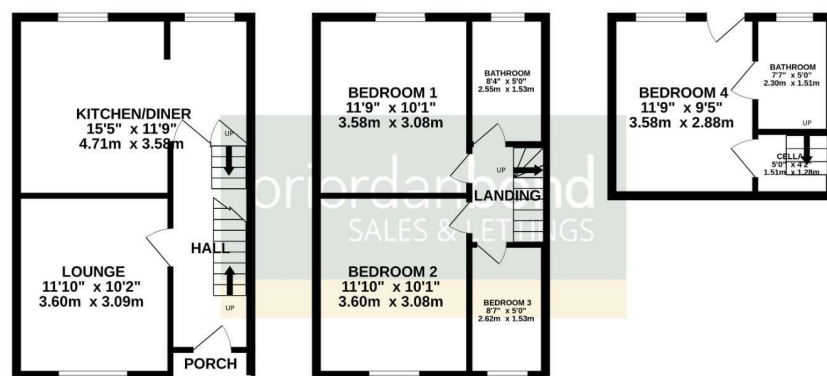


Freehold Street

Kingsthorpe Hollow
NN2 6EW

GUIDE PRICE £220,000

GROUND FLOOR
889 sq.ft. (82.6 sq.m.) approx.



TOTAL FLOOR AREA: 889 sq.ft. (82.6 sq.m.) approx.

Whilst every attempt has been made to ensure the accuracy of the floorplan contained herein, measurements of doors, windows, rooms and any other items are approximate and no responsibility is taken for any error, omission or mis-statement. This plan is for illustrative purposes only and should be used as such by any prospective purchaser. The services, systems and appliances shown have not been tested and no guarantee as to their operability or efficiency can be given.
Made with Metreage 02024

A well presented three/four bedroom mid terraced family home, offered to the market with no onward chain, located in the popular area of Kingsthorpe Hollow. The property has easy access to Northampton train station and ample local amenities and schools.

In brief accommodation comprises entrance hall, sitting room, open plan kitchen/dining room with access to a converted cellar with a double bedroom & bathroom and access to the garden. From the first floor landing there are three good size bedrooms and a modern family bathroom. Outside is a rear garden with right of way access and on street parking to the front. Further benefits include gas radiator heating and uPVC double glazing. (B/889/L)

Additional information

- Council Tax Band: A
- Energy Efficiency Rating: C

Viewing

Viewing strictly by appointment – details below

Disclaimer

O'Riordan Bond Estate Agents Limited has not tested apparatus, equipment, fittings or services and so cannot verify they are in working order. The buyer is advised to obtain verification from their solicitor or surveyor.

O'Riordan Bond Kingsthorpe Sales
01604 722007

kingsthorpe@oriordanbond.co.uk

