



Shepherd Close

Kingsthorpe, Northampton

oriordanbond
SALES & LETTINGS



Shepherd Close

Kingsthorpe
NN2 8QQ

Offers Over
£260,000

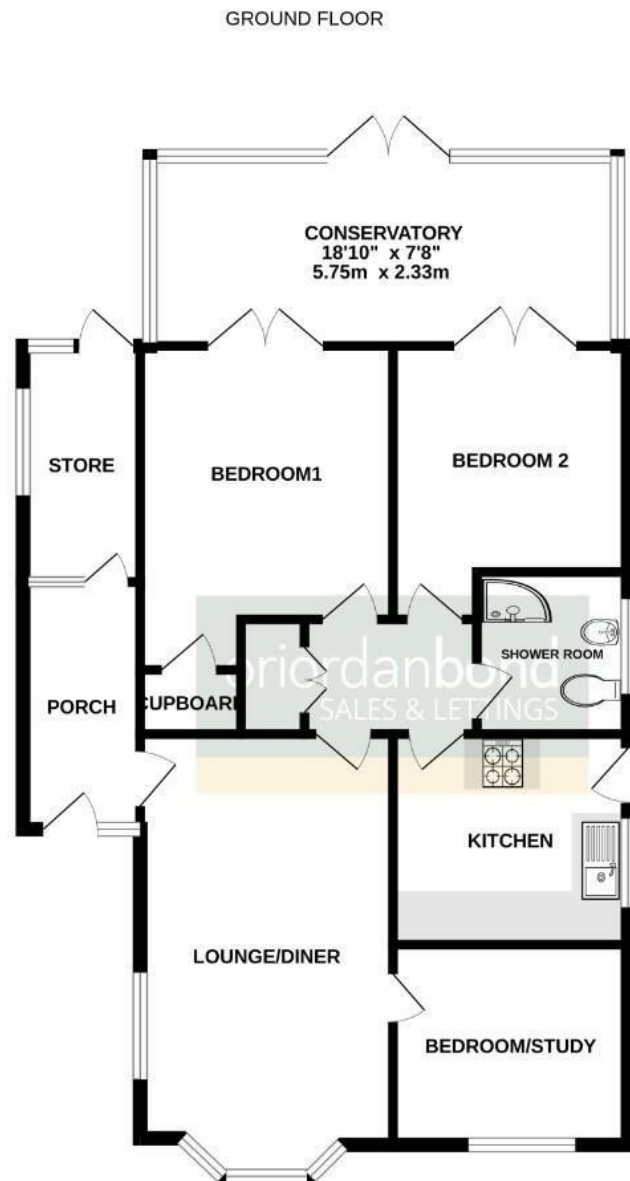
Offered to the market with no onward chain is this two/three bedroom detached bungalow, situated in a quiet cul-de-sac location, in this popular area of Kingsthorpe.

The accommodation comprises entrance hall, sitting/dining room, kitchen, utility room, large conservatory, shower room and three bedrooms. Outside is a rear garden with decking area leading to laid to lawn and side access. To the front of the property is a driveway providing off road parking and small garden. There is also a detached single garage to the rear of the garden. Further benefits include uPVC double glazing and gas radiator heating. (C/719/M)

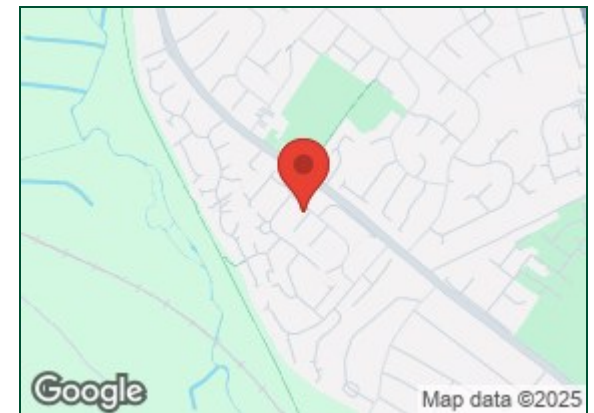
- Two/Three bedroom detached bungalow
- Large conservatory
- Gas radiator heating
- Enclosed rear garden
- Off road parking and detached garage
- No onward chain







Whilst every attempt has been made to ensure the accuracy of the floorplan contained here, measurements of doors, windows, rooms and any other items are approximate and no responsibility is taken for any error, omission or mis-statement. This plan is for illustrative purposes only and should be used as such by any prospective purchaser. The services, systems and appliances shown have not been tested and no guarantee as to their operability or efficiency can be given.
Made with Metropix ©2025



Additional information

- Council Tax Band: C
- Energy Efficiency Rating: C

Viewing

Viewing strictly by appointment – details below

Disclaimer

O'Riordan Bond Estate Agents Limited has not tested apparatus, equipment, fittings or services and so cannot verify they are in working order. The buyer is advised to obtain verification from their solicitor or surveyor.

O'Riordan Bond Kingsthorpe Sales

01604 722007

kingsthorpe@oriordanbond.co.uk

