



Welford Road
Kingsthorpe, Northampton

oriordanbond
SALES & LETTINGS



Welford Road

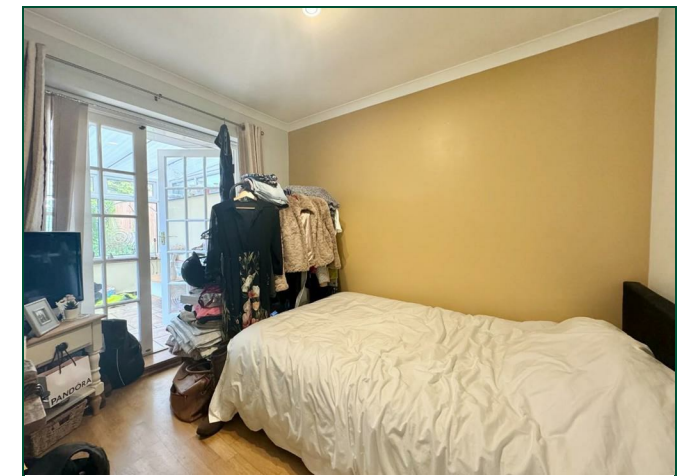
Kingsthorpe
NN2 8AG

Price
£225,000

Offered for sale with no onward chain is this rarely available mature semi-detached bungalow situated in this popular location within Kingsthorpe. The property is located close to local amenities, bus stops and schools.

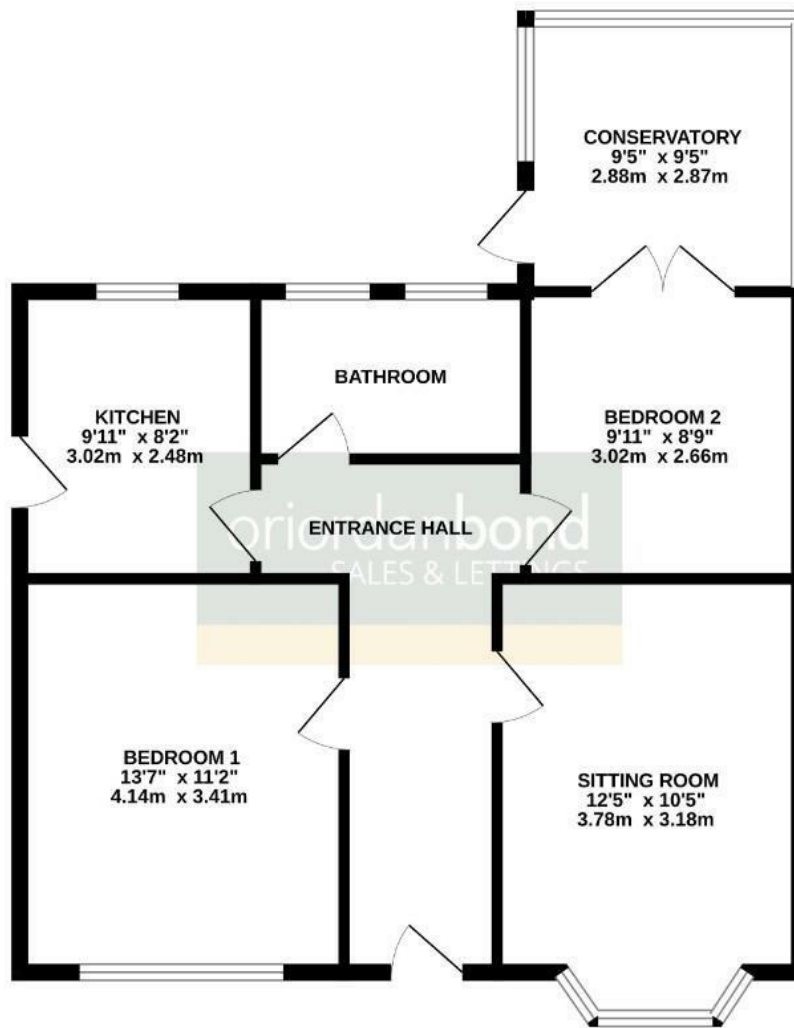
The accommodation comprises entrance hall, bay fronted sitting room, kitchen, conservatory, master bedroom, generous size guest bedroom and a shower room. Outside to the front of the property is a larger than average size enclosed garden. To the rear is a private family garden with patio area and lawn. Further benefits include uPVC double glazing and gas radiator heating. (B/729/M)

- Rarely available two bedroom semi-detached bungalow
- Conservatory
- Shower room
- Gas radiator heating
- Enclosed rear garden
- No onward chain





GROUND FLOOR



TOTAL FLOOR AREA: 729 sq. ft. (67.8 sq.m.) approx.

Whilst every attempt has been made to ensure the accuracy of the floorplan contained here, measurements of doors, windows, rooms and any other items are approximate and no responsibility is taken for any error, omission or mis-statement. This plan is for illustrative purposes only and should be used as such by any prospective purchaser. The services, systems and appliances shown have not been tested and no guarantee as to their operability or efficiency can be given.
Made with Metropix ©2024



Additional information

- Council Tax Band: B
- Energy Efficiency Rating: D

Viewing

Viewing strictly by appointment – details below

Disclaimer

O'Riordan Bond Estate Agents Limited has not tested apparatus, equipment, fittings or services and so cannot verify they are in working order. The buyer is advised to obtain verification from their solicitor or surveyor.

O'Riordan Bond Kingsthorpe Sales

01604 722007

kingsthorpe@oriordanbond.co.uk

