



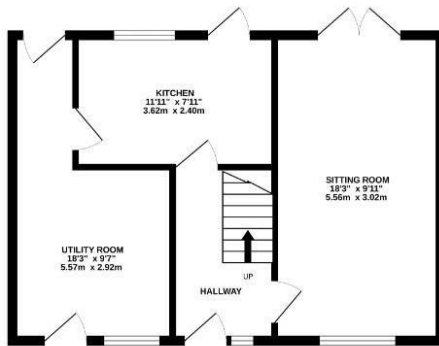
# Aynho Walk

Kingsthorpe, Northampton

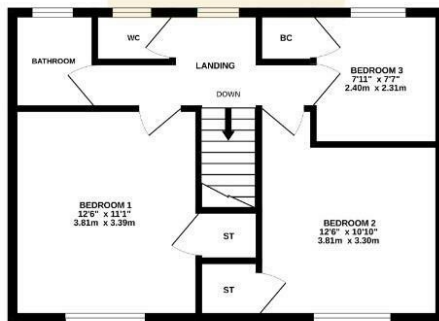
oriordanbond  
SALES & LETTINGS



GROUND FLOOR



1ST FLOOR  
oriordanbond  
SALES & LETTINGS



TOTAL FLOOR AREA: 934 sq ft. (86.8 sq.m.) approx.

Whilst every attempt has been made to ensure the accuracy of the floorplans contained here, measurements of doors, windows, rooms and any other items are approximate and no responsibility is taken for any error, omission or mis-statement. This plan is for illustrative purposes only and should be used as such by any prospective purchaser. The services, systems and appliances shown have not been tested and no guarantee as to their operability or efficiency can be given.  
\*Made with floorplan.co.uk

## Aynho Walk

Kingsthorpe

NN2 8LJ

GUIDE PRICE £220,000

A well presented three bedroom end terraced property, situated a short distance from local amenities and schools, in this popular area of Kingsthorpe.

The accommodation comprises entrance hall, sitting room with French doors to the rear garden, kitchen and a side utility room also providing access to the rear garden. From the first floor landing are three generous size bedrooms all proving built-in storage space, a family bathroom and separate WC. Outside is an enclosed rear garden with patio area leading to laid to lawn. To the front of the house is a small easy maintained garden. Further benefits include gas radiator heating and uPVC double glazing. (C/9345/M)

### Additional information

- Council Tax Band: B
- Energy Efficiency Rating: D

### Viewing

Viewing strictly by appointment – details below

### Disclaimer

O'Riordan Bond Estate Agents Limited has not tested apparatus, equipment, fittings or services and so cannot verify they are in working order. The buyer is advised to obtain verification from their solicitor or surveyor.

O'Riordan Bond Kingsthorpe Sales

01604 722007

kingsthorpe@oriordanbond.co.uk

