



Welford Road
Kingsthorpe, Northampton

oriordanbond
SALES & LETTINGS



Welford Road

Kingsthorpe
NN2 8PT

Price
£280,000

An extended three bedroom semi-detached bungalow, situated on the popular Welford Road in Kingsthorpe, offered to the market with no onward chain. The property is ideally located on the outskirts of Kingsthorpe with easy access to countryside walks, a public bus stop and local amenities.

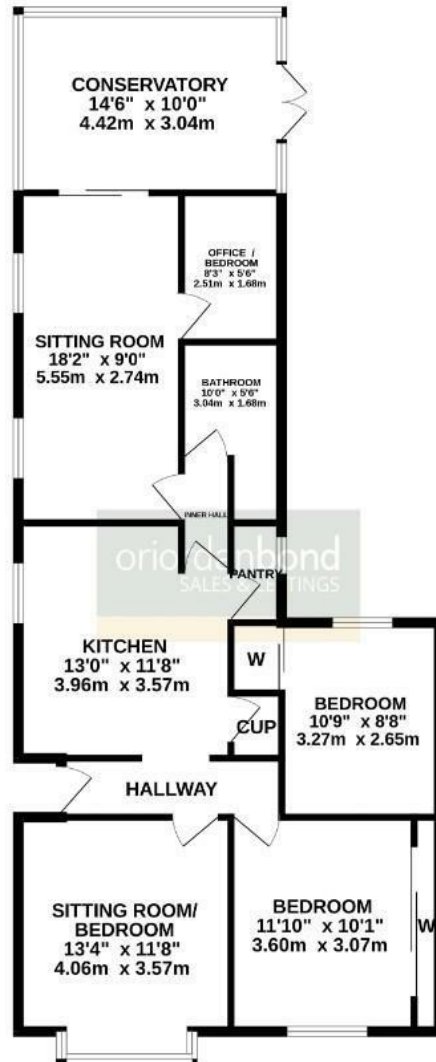
The accommodation comprises: entrance hall, kitchen with pantry cupboard, four-piece family bathroom, two separate living rooms, conservatory and three bedrooms with the master benefiting from built-in wardrobes. Outside to the rear is a south/westerly facing garden with patio area leading to laid to lawn, shrub borders and garden shed. To the front of the property is a large driveway providing off road parking for several vehicles and small low maintenance garden. Further benefits include gas radiator heating and double glazed windows. (C/1014/L)

- Extended three bedroom semi-detached bungalow
- Two reception rooms and conservatory
- Gas radiator heating
- South/westerly facing rear garden
- Ample off road parking
- No onward chain



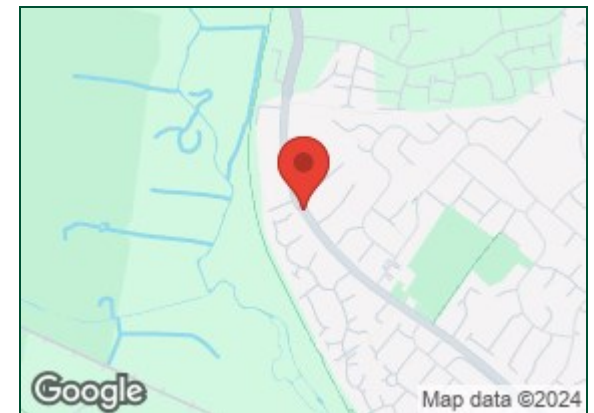


GROUND FLOOR
1014 sq.ft. (94.2 sq.m.) approx.



TOTAL FLOOR AREA: 1014 sq.ft. (94.2 sq.m.) approx.

Whilst every attempt has been made to ensure the accuracy of the floor plan contained here, measurements of doors, windows, rooms and any other items are approximate and no responsibility is taken for any error, omission or mis-statement. This plan is for illustrative purposes only and should be used as such by any prospective purchaser. The services, systems and appliances shown have not been tested and no guarantee as to their operability or efficiency can be given.
Made with Metropix ©2024



Additional information

- Council Tax Band: C
- Energy Efficiency Rating: D

Viewing

Viewing strictly by appointment – details below

Disclaimer

O'Riordan Bond Estate Agents Limited has not tested apparatus, equipment, fittings or services and so cannot verify they are in working order. The buyer is advised to obtain verification from their solicitor or surveyor.

O'Riordan Bond Kingsthorpe Sales

01604 722007

kingsthorpe@oriordanbond.co.uk

