



# Cambridge Street

Semilong, Northampton

oriordanbond  
SALES & LETTINGS



# Cambridge Street

Semilong

NN2 6DW

PRICE £180,000

A well presented two bedroom terraced property located in this popular area of Semilong. The property is ideally situated close to Northampton train station, choice of schools and ample amenities.

The accommodation comprises entrance hall, open plan sitting/dining room with feature fireplace, good size kitchen with store cupboard and access to the cellar. From the first floor landing are two double bedrooms and large four-piece family bathroom. Outside, to the rear of the property is an enclosed low maintenance garden with outside storage. Further benefits include gas radiator heating and uPVC double glazing. (B/988/S)

### Additional information

- Council Tax Band: A
- Energy Efficiency Rating: D

### Viewing

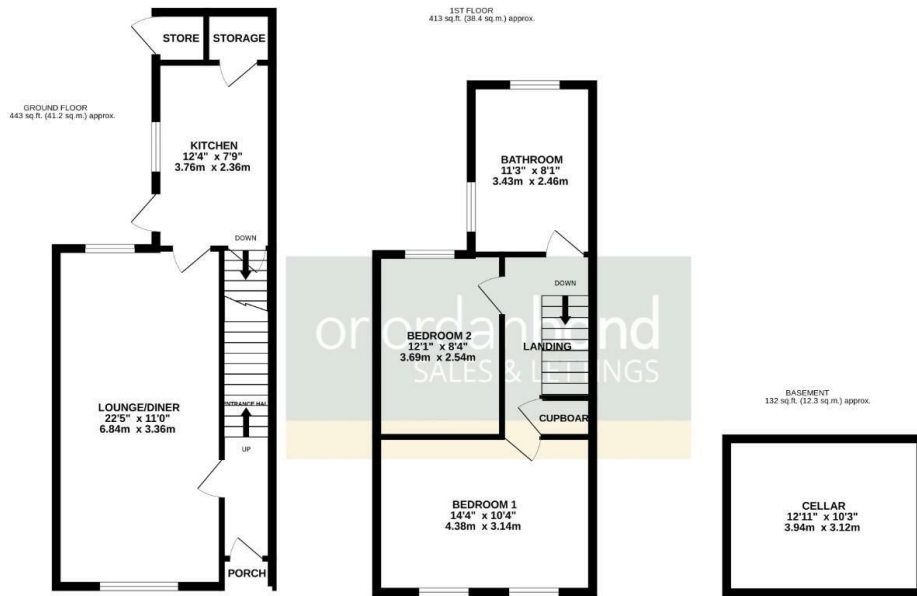
Viewing strictly by appointment – details below

### Disclaimer

O’Riordan Bond Estate Agents Limited has not tested apparatus, equipment, fittings or services and so cannot verify they are in working order. The buyer is advised to obtain verification from their solicitor or surveyor.

O’Riordan Bond Kingsthorpe Sales  
01604 722007

kingsthorpe@oriordanbond.co.uk



TOTAL FLOOR AREA: 988 sq.ft. (91.8 sq.m.) approx.

Whilst every attempt has been made to ensure the accuracy of the floorplan contained here, measurements of doors, windows, rooms and any other items are approximate and no responsibility is taken for any error, omission or mis-statement. This plan is for illustrative purposes only and should be used as such by any prospective purchaser. The services, systems and appliances shown have not been tested and no guarantee as to their operability or efficiency can be given.  
Made with Metropix ©2024

