



Eastern Avenue South
Kingsthorpe, Northampton

oriordanbond
SALES & LETTINGS



Eastern Avenue South

Kingsthorpe
NN2 7QB

PRICE £175,000

A two bedroom linked detached family home, located in the heart of Kingsthorpe, within walking distance to local schools and amenities. The property is offered to the market with no onward chain and requires modernisation throughout.

The accommodation comprises entrance hall, storage cupboard, sitting/dining room, separate kitchen with rear access to the garden, two first floor double bedrooms and a family bathroom. Outside is an enclosed rear garden and an open plan lawned front garden. Further benefits include gas radiator heating and uPVC double glazing. (C/835/S)

Additional information

- Council Tax Band: A
- Energy Efficiency Rating: E

Viewing

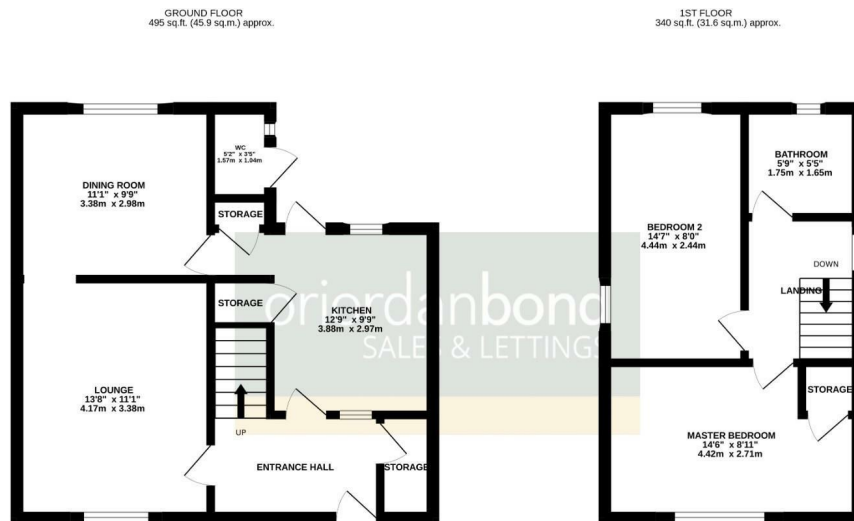
Viewing strictly by appointment – details below

Disclaimer

O’Riordan Bond Estate Agents Limited has not tested apparatus, equipment, fittings or services and so cannot verify they are in working order. The buyer is advised to obtain verification from their solicitor or surveyor.

O’Riordan Bond Kingsthorpe Sales
01604 722007

kingsthorpe@oriordanbond.co.uk



TOTAL FLOOR AREA: 835 sq.ft. (77.5 sq.m.) approx.

While every attempt has been made to ensure the accuracy of the floorplan contained here, measurements of doors, windows, rooms and any other items are approximate and no responsibility is taken for any error, omission or mis-statement. This plan is for illustrative purposes only and should be used as such by any prospective purchaser. The services, systems and appliances shown have not been tested and no guarantee as to their operability or efficiency can be given.
Made with Metropix CS2024

