

LOWER HESTER

89

**Lower Hester Street**  
Semilong, Northampton

oriordanbond  
SALES & LETTINGS



## Lower Hester Street

Semilong

NN2 6BJ

PRICE £194,995

Offered for sale with no onward chain is this two bedroom Victorian end terraced property, situated in the popular Semilong area, close to the town centre, Northampton General Hospital and train station.

The accommodation comprises entrance hall, sitting room, 23' kitchen/dining room and access to a cellar. To the first floor are two generous size bedrooms and a four-piece bathroom suite. Outside to the rear is a larger than usual courtyard garden compared to other properties in the area. Further benefits include double glazing throughout and gas radiator heating. (B/984/S)

### Additional information

- Council Tax Band: A
- Energy Efficiency Rating:

### Viewing

Viewing strictly by appointment – details below

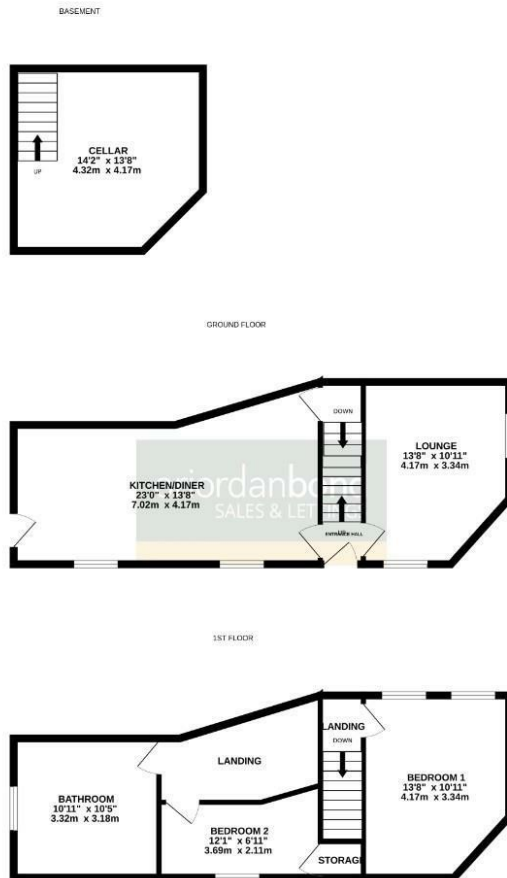
### Disclaimer

O'Riordan Bond Estate Agents Limited has not tested apparatus, equipment, fittings or services and so cannot verify they are in working order. The buyer is advised to obtain verification from their solicitor or surveyor.

O'Riordan Bond Kingsthorpe Sales

01604 722007

kingsthorpe@oriordanbond.co.uk



TOTAL FLOOR AREA: 984 sq. ft. (91.4 sq. m.) approx.

Whilst every attempt has been made to ensure the accuracy of the floorplan contained here, measurements of doors, windows, rooms and any other items are approximate and no responsibility is taken for any error, omission or mis-statement. This plan is for illustrative purposes only and should be used as such by any prospective purchaser. The services, systems and appliances shown have not been tested and no guarantee as to their operability or efficiency can be given.  
Made with Metrepro CS224

