



Glebe Road
Boughton, Northampton

oriordanbond
SALES & LETTINGS



Glebe Road

Boughton
NN2 8ET

PRICE £259,995

A modern two bedroom terraced home, set in the popular development of Buckton Fields, within walking distance of local schools, shops and countryside walks.

Accommodation comprises entrance hall, cloakroom/WC and a semi-open plan kitchen/sitting room with French doors opening to the external family area and rear garden. From the first floor landing is a three-piece family bathroom and two generous size bedrooms both benefitting from built-in storage/wardrobes and an en-suite to the master. Outside to the rear is an undercover family area, an enclosed garden which is laid with artificial lawn and also provides side access to the property. To the front is allocated off road parking for two vehicles and a further allocated space for visitor parking. Further benefits include uPVC double glazing, gas radiator heating and two plus years of NHBC guarantee remaining. (A/674/S)

Additional information

- Council Tax Band: C
- Energy Efficiency Rating: B

Viewing

Viewing strictly by appointment – details below

Disclaimer

O’Riordan Bond Estate Agents Limited has not tested apparatus, equipment, fittings or services and so cannot verify they are in working order. The buyer is advised to obtain verification from their solicitor or surveyor.

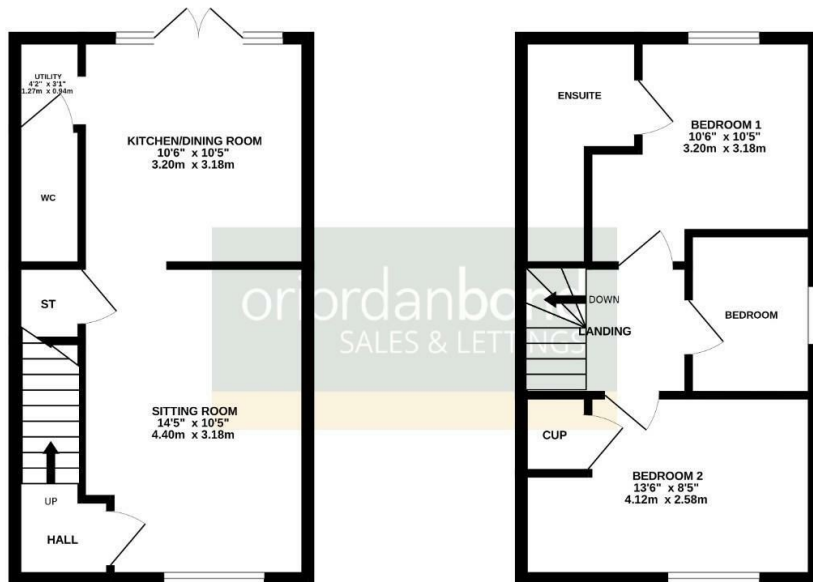
O’Riordan Bond Kingsthorpe Sales
01604 722007

kingsthorpe@oriordanbond.co.uk



GROUND FLOOR

1ST FLOOR



TOTAL FLOOR AREA: 674 sq.ft. (62.6 sq.m) approx.

Whilst every attempt has been made to ensure the accuracy of the floorplan contained here, measurements of doors, windows, rooms and any other items are approximate and no responsibility is taken for any error, omission or mis-statement. This plan is for illustrative purposes only and should be used as such by any prospective purchaser. The services, systems and appliances shown have not been tested and no guarantee as to their operability or efficiency can be given.
Made with Metropix 02024