



Welford Road

Kingsthorpe, Northampton

oriordanbond
SALES & LETTINGS



Welford Road

Kingsthorpe

NN2 8AL

PRICE £270,000

Offered to the market with no onward chain is this mature three bedroom semi-detached family home located on the popular Welford Road in Kingsthorpe. The property is within walking distance to local shops, schools and playing fields.

Accommodation comprises entrance hall, large open plan sitting/dining room and separate kitchen with rear access. From the first floor landing are three generous size double bedrooms serviced by a three-piece family bathroom. Outside is a front garden with driveway providing off road parking leading to a single garage. To the rear is a large garden with patio area leading to laid to lawn. Further benefits include gas radiator heating and uPVC double glazing. (C/886/L)

Additional information

- Council Tax Band: C
- Energy Efficiency Rating: C

Viewing

Viewing strictly by appointment – details below

Disclaimer

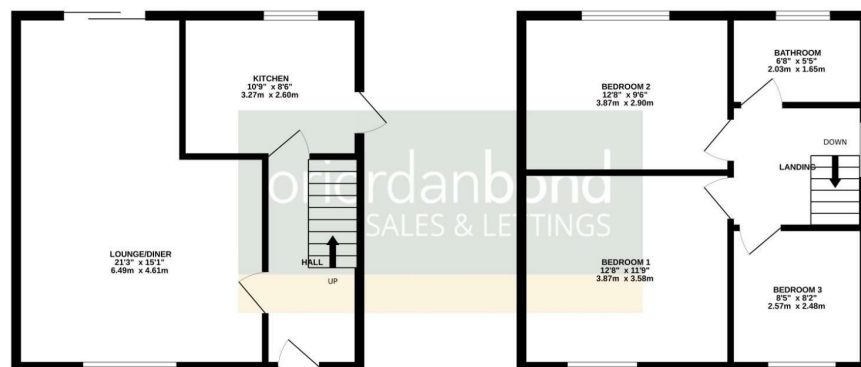
O'Riordan Bond Estate Agents Limited has not tested apparatus, equipment, fittings or services and so cannot verify they are in working order. The buyer is advised to obtain verification from their solicitor or surveyor.

O'Riordan Bond Kingsthorpe Sales
01604 722007

kingsthorpe@oriordanbond.co.uk

GROUND FLOOR
443 sq.ft. (41.2 sq.m.) approx.

1ST FLOOR
443 sq.ft. (41.2 sq.m.) approx.



TOTAL FLOOR AREA : 886 sq.ft. (82.3 sq.m.) approx.

Whilst every attempt has been made to ensure the accuracy of the floorplan contained here, measurements of doors, windows, rooms and any other items are approximate and no responsibility is taken for any error, omission or mis-statement. This plan is for illustrative purposes only and should be used as such by any prospective purchaser. The services, systems and appliances shown have not been tested and no guarantee as to their operability or efficiency can be given.
Made with Metropac C0024

