



**Thornby Drive**  
Kingsthorpe, Northampton

**oriordanbond**  
SALES & LETTINGS





## Thornby Drive

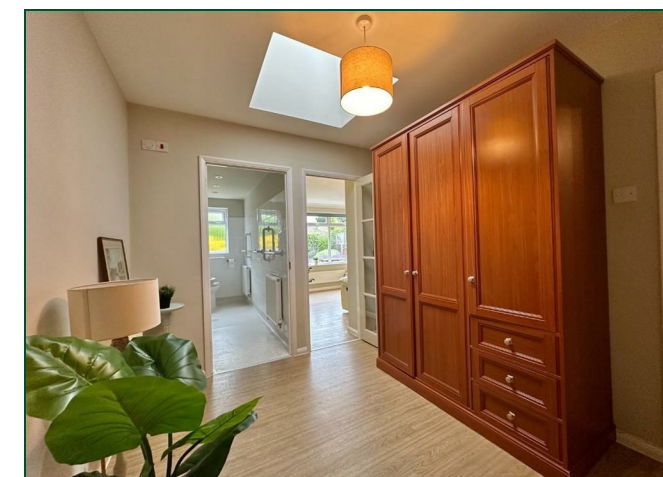
Kingsthorpe  
NN2 8HB

Guide Price  
£285,000

Offered to the market with no onward chain is this extended and well presented two bedroom semi-detached bungalow, situated in this sought after area within Kingsthorpe. The property is within walking distance to local amenities, a public bus stop and schools.

Accommodation comprises large entrance hall, bay fronted sitting room, master bedroom to the front, re-fitted shower room, guest bedroom with en-suite and an extended kitchen/dining/family room with French doors leading to the rear garden. Outside is a well maintained rear garden with patio area leading to laid to lawn and a brick storage shed. To the front of the property is a block paved driveway providing off road parking for several vehicles leading to a detached single garage. Further benefits include uPVC double glazing and gas radiator heating. (A/739/M)

- Extended two bedroom semi-detachdd bungalow
- Guest bedroom en-suite
- Extended kitchen/dining/family room
- Well maintained rear garden
- Driveway and garage
- No onward chain

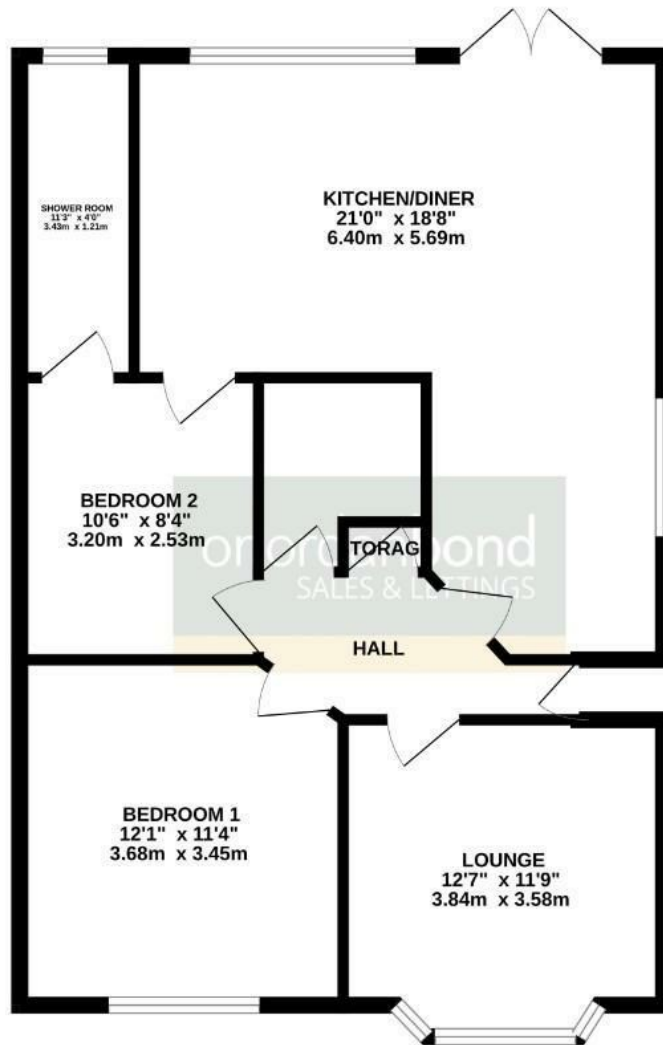








GROUND FLOOR  
739 sq.ft. (68.6 sq.m.) approx.



TOTAL FLOOR AREA : 739 sq.ft. (68.6 sq.m.) approx.

Whilst every attempt has been made to ensure the accuracy of the floorplan contained here, measurements of doors, windows, rooms and any other items are approximate and no responsibility is taken for any error, omission or mis-statement. This plan is for illustrative purposes only and should be used as such by any prospective purchaser. The services, systems and appliances shown have not been tested and no guarantee as to their operability or efficiency can be given.  
Made with Metropix ©2024



#### Additional information

- Council Tax Band: C
- Energy Efficiency Rating:

#### Viewing

Viewing strictly by appointment – details below

#### Disclaimer

O'Riordan Bond Estate Agents Limited has not tested apparatus, equipment, fittings or services and so cannot verify they are in working order. The buyer is advised to obtain verification from their solicitor or surveyor.

O'Riordan Bond Kingsthorpe Sales

01604 722007

kingsthorpe@oriordanbond.co.uk

