



Crawley Close

Kingsthorpe, Northampton

oriordanbond
SALES & LETTINGS



Crawley Close

Kingsthorpe
NN2 8BA

Offers Over
£425,000

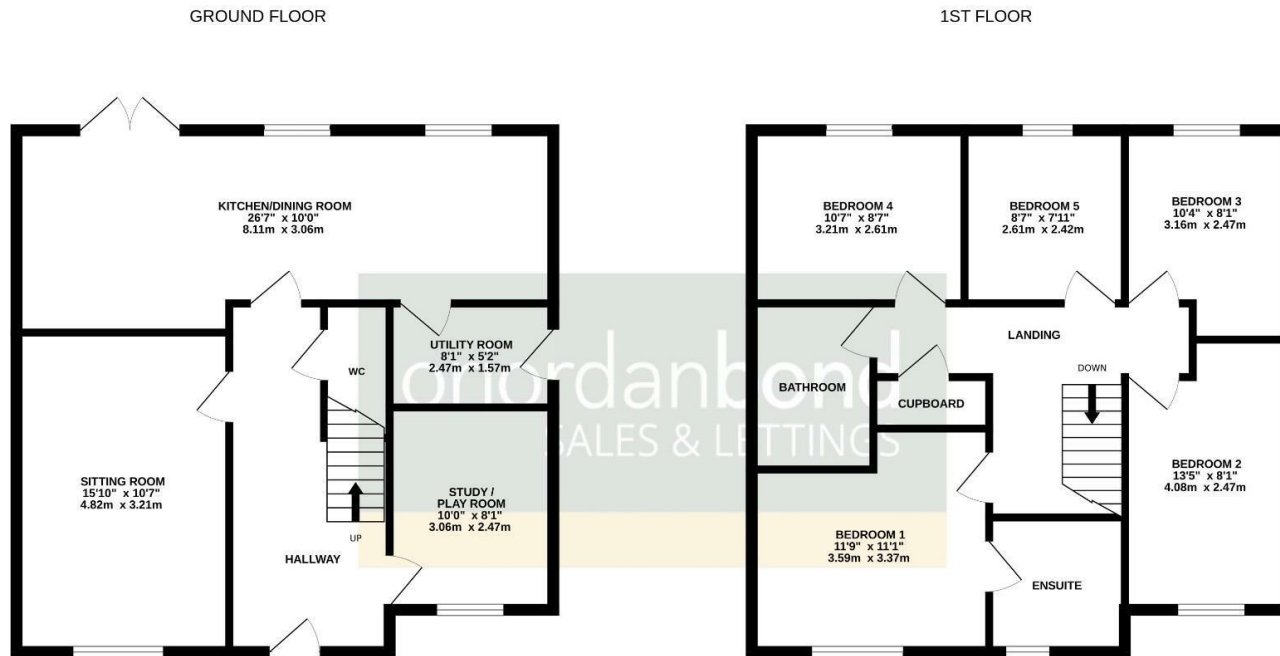
A well presented five bedroom detached family home, located in this secluded area of Kingsthorpe, within easy access to local amenities and countryside walks.

Accommodation comprises entrance hall with cloakroom/WC, study/playroom, sitting room and an 26' open plan kitchen/dining room with integrated appliances leading to utility room. From the first floor landing is a three-piece family bathroom, five generous size bedrooms with shower ensuite to the master. Outside, to the rear is a family garden with patio leading to laid to lawn and an additional private seating area in the top corner of the gardens parameter. To the front of the property is a driveway providing off road parking for up to five vehicles leading to a detached garage. Further benefits include uPVC double glazing and gas radiator heating. (A/1342/M)

- Well presented five bedroom detached home
- En-suite to master bedroom
- Two reception rooms
- 26' kitchen/dining room
- Enclosed rear garden
- Ample off road parking and detached garage

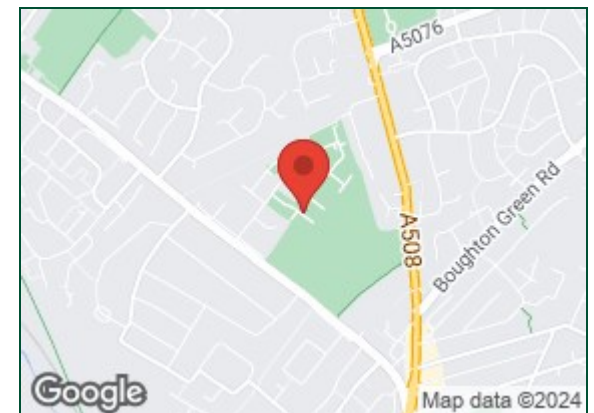






TOTAL FLOOR AREA : 1342 sq.ft. (124.7 sq.m.) approx.

Whilst every attempt has been made to ensure the accuracy of the floorplan contained here, measurements of doors, windows, rooms and any other items are approximate and no responsibility is taken for any error, omission or mis-statement. This plan is for illustrative purposes only and should be used as such by any prospective purchaser. The services, systems and appliances shown have not been tested and no guarantee as to their operability or efficiency can be given.
Made with Metropix ©2024



Additional information

- Council Tax Band: E
- Energy Efficiency Rating: B

Viewing

Viewing strictly by appointment – details below

Disclaimer

O’Riordan Bond Estate Agents Limited has not tested apparatus, equipment, fittings or services and so cannot verify they are in working order. The buyer is advised to obtain verification from their solicitor or surveyor.

O’Riordan Bond Kingsthorpe Sales

01604 722007

kingsthorpe@oriordanbond.co.uk

