



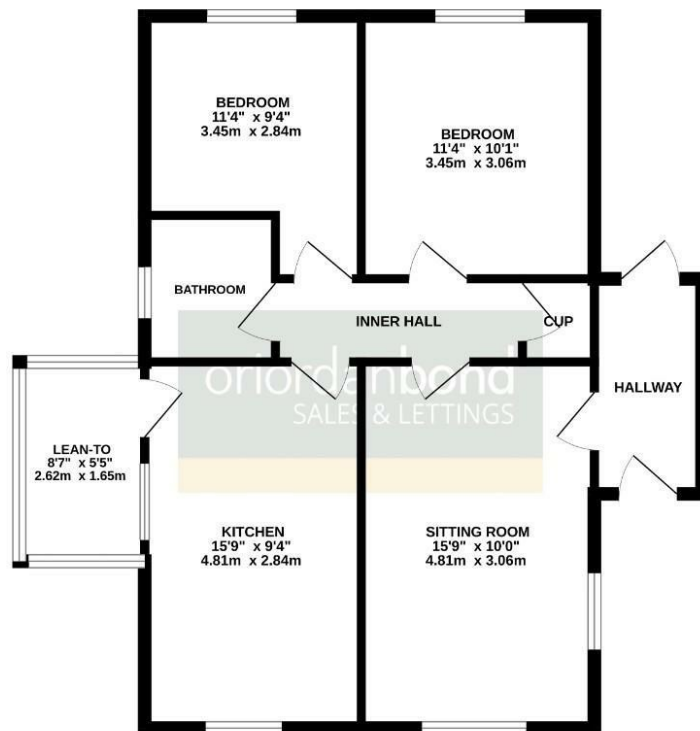
Delta Way

Kingsthorpe, Northampton

oriordanbond
SALES & LETTINGS



GROUND FLOOR
684 sq.ft. (63.6 sq.m.) approx.



TOTAL FLOOR AREA : 684 sq.ft. (63.6 sq.m.) approx.
Whilst every attempt has been made to ensure the accuracy of the floorplan contained here, measurements of doors, windows, rooms and any other items are approximate and no responsibility is taken for any error, omission or mis-statement. This plan is for illustrative purposes only and should be used as such by any prospective purchaser. The services, systems and appliances shown have not been tested and no guarantee as to their operability or efficiency can be given.
Made with Metrepro CS224

Delta Way

Kingsthorpe

NN2 8QB

PRICE £260,000

Offered to the market with no onward chain is this mature two bedroom detached bungalow, located in a quiet and popular area in Kingsthorpe. The property benefits from a private corner plot and has easy access to countryside walks and local amenities.

The accommodation comprises entrance porch, dual aspect sitting room, large kitchen/dining room with lean-to providing extra storage space, a three-piece family bathroom and two double bedrooms. Outside, to the rear of the property is a private wrap around garden with patio area leading to laid to lawn and side access. To the front of the property is a well maintained garden with pathway leading to the front door, a separate single garage and off road parking. Further benefits include uPVC double glazing, gas radiator heating, modern fitted combination boiler and a complete rewire. (C/684/L)

Additional information

- Council Tax Band: C
- Energy Efficiency Rating: D

Viewing

Viewing strictly by appointment – details below

Disclaimer

O'Riordan Bond Estate Agents Limited has not tested apparatus, equipment, fittings or services and so cannot verify they are in working order. The buyer is advised to obtain verification from their solicitor or surveyor.

O'Riordan Bond Kingsthorpe Sales

01604 722007

kingsthorpe@oriordanbond.co.uk

