



Semilong Road

Semilong, Northampton

oriordanbond
SALES & LETTINGS



Semilong Road

Semilong
NN2 6DG

PRICE £264,995

Offered to the market with no onward chain is this three bedroom terraced family home, located in the desirable Semilong area, within easy access to local amenities, schools and Northampton train station. The property has been finished to a high standard throughout.

Accommodation comprises entrance hall, cloakroom/WC, office/fourth bedroom, large sitting room with wood flooring, multi fuel log burning stove and French doors to the rear garden. There is a modern open plan kitchen/dining room with fitted appliances and ample wall and base units. From the first floor landing are three spacious bedrooms and a four-piece family bathroom. Outside is a driveway to the front providing off road parking for several vehicles and a low maintenance rear garden. Further benefits include uPVC double glazing and gas radiator heating. (B/1258/S)

Additional information

- Council Tax Band: C
- Energy Efficiency Rating: C

Viewing

Viewing strictly by appointment – details below

Disclaimer

O’Riordan Bond Estate Agents Limited has not tested apparatus, equipment, fittings or services and so cannot verify they are in working order. The buyer is advised to obtain verification from their solicitor or surveyor.

O’Riordan Bond Kingsthorpe Sales
01604 722007

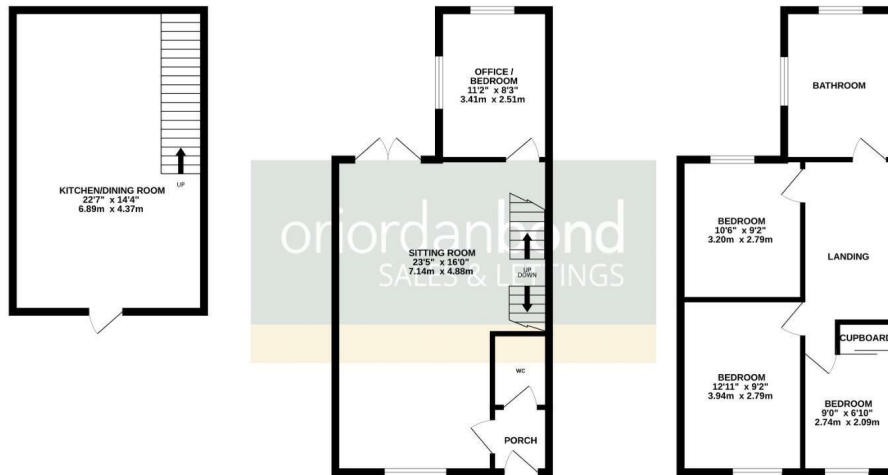
kingsthorpe@oriordanbond.co.uk



BASEMENT

GROUND FLOOR

1ST FLOOR



TOTAL FLOOR AREA - 1258 sq.ft. (116.9 sq.m.) approx.

Whilst every attempt has been made to ensure the accuracy of the floorplan contained here, measurements of doors, windows, rooms and any other items are approximate and no responsibility is taken for any error, omission or mis-statement. This plan is for illustrative purposes only and should be used as such by any prospective purchaser. The services, systems and appliances shown have not been tested and no guarantee as to their operability or efficiency can be given.
Made with Metropix ©2024